

ART SHARE LOVE

Wales & Borders

FREE



JAN/FEB 2024
ISSUE 117

Dawn Harries Art | Low Autumn Sunshine, Brecon



Giles Gallery | Life: Full Colour | Jill Jones Fine Art | Janet Chaplin Art | Queen Street Gallery
Greenspace Gallery | Oriel Cric Gallery | The Makers Crafts Gallery | Apple Store Gallery



2024
JAN/FEB

Adverts/Editorial

Greenspace Gallery
The Makers Craft Galleries
Ewemoo
Oriol Cric Gallery
Life: Full Colour Gallery
Jill Jones Fine Art
Giles Gallery
Dawn Harries Art
Bluestone Gallery
Queen Street Gallery
Janet Chaplin Art
Cheshire School of Jewellery
Good Art Studio
Apple Store Gallery

Say hello!

Email: ingrid@artsharelove.com

Tel: 07530875629

www.artsharelove.com

Disclaimer: Reasonable care has been taken to ensure that the information contained in this guide in print and on the website are as up-to-date and accurate as possible, as of the time of publication, but no responsibility can be taken by ART SHARE LOVE WALES & BORDERS Magazine for any errors or omissions contained herein. Furthermore, responsibility for any losses, damages or distress resulting from adherence to any information made available through this guide/website is not the responsibility of ART SHARE LOVE Magazine. Readers are advised to check with listings/article information with event providers to avoid disappointment. No responsibility will be accepted for any errors or omissions.

GREENSPACE GALLERY

Calon y Fferi Community Centre | Ferryside | Carmarthen | SA17 5TE



Paint your own Mackerel Skies & other landscapes

Evening classes Every
Monday 7 to 9pm at
Greenspace Gallery in
Ferryside.



Hand-built ceramics

Every Tuesday evenings
7 to 9pm at Greenspace
Gallery.

Both classes cost £15 each, all materials included.

Greenspace Gallery is opening again in February
Wednesday to Saturday, 11 to 4pm.

Email: dorothy_morris@hotmail.com
to book a space.



venue on Monk Street.

We are also updating our website to update our members' links, as well as gearing up to take part in CrIC Open Studios, h.Art and other exciting events, so please do keep an eye on www.themakerscraftsgallery.co.uk or our social media pages – we will also be introducing new workshops in the Spring, so if you have any suggestions or requests, please email themakerscraftsgalleries@gmail.com

Happy new year from us all – and to welcome the new year, exciting news from both sites! New makers joined the gallery 'family' – we would like to introduce some here...

Amanda Rayner of [@wyldwoodwillow](#), Sarah Breese of [@sarahbreesedesign](#), and Linzi Whitting [@linzimorganwhitting](#) – we are thrilled that these makers can be found at our Craft Renaissance crafts gallery; you can also find a pop up exhibition from David Collyer!

The Abergavenny crafts gallery also continues to offer space for emerging and established artists and makers, and we are delighted to introduce Rachel Wyatt-Cox [@cuckootextiles](#), Edward Woolley [@edwoolleyartist](#), Sarah Lamb [@sarahlamb.studio](#) and Claire Scawn [@claire.s_maker](#) to our

You are also invited to our one year anniversary of opening our gallery in Abergavenny – it is also 6 years since it first opened near Hay, so we will have a lot to celebrate, and you can enjoy complimentary drinks and little discounts on certain items – all taking place on Saturday 27th January, from 5pm to 8pm.

The Makers in Abergavenny reopens on January 9th, and The Makers at Craft Renaissance opens on January 10th... see you all soon!

Facebook: [@The Makers](#)
Facebook: [@The Makers at Craft Renaissance](#)



The Makers Crafts Gallery
30 Monk St,
Abergavenny
NP7 5NP

The Makers at Craft Renaissance
Kemeys Commander
(Next to Chainbridge) Usk
NP15 1JU

Instagram: @themakers_gallery
Instagram: @themakers_craftsrenaissance

www.themakerscraftsgallery.co.uk



ewemoo

footstools



visit our website
for a large
selection of gifts



ewemoo

www.ewemoo.co.uk

Tel: 07778102238



The interior design 'must-have' for 2024, ewe'll be spoilt for choice with a Ewemoo!

Everyone's got their own go-to colour and there's a Ewemoo footstool to suit any taste and colour palette choice.

Proudly made in Wales, a Ewemoo footstool is crafted using only the finest materials and adds an elegant, quirky and character filled finish to any space.



Visit their website to view a large selection of footstools, including their original sheep, bulls, pigs and even hedgehogs! There is even the option to customise it with their signature daffodil and different wood stain options. On their website you will also discover an amazing range of gifts and accessories, all available to shop direct online:

www.ewemoo.co.uk

Discover your favourite Ewemoo today!





'Over The Footbridge' | Jantien Powell

The new year is guaranteed to get off to a great start at the Oriël CRiC Gallery in Crickhowell with a number of exciting art exhibitions to see during 2024.

The current winter exhibition will be followed mid-January by a fresh mixed show for the new year. Once we say goodbye to winter, an exhibition by members of the Royal Watercolour Society of Wales promises to put a spring in your step in March. Planning is underway for the gallery's annual Open Art competition which results in an exhibition of selected work starting during the Spring Bank Holiday Weekend. The application process will open by mid-January.

The Crickhowell Open Art exhibition is a highlight of the gallery's programme and gives an opportunity to exhibit in this small but beautiful gallery space in the heart of the Brecon Beacons and Black Mountains. It annually attracts an exciting mix of professional, emerging and amateur artists culminating in a diverse exhibition starting during the Crickhowell Open Studios Weekend. (25 to 27 May 2024)

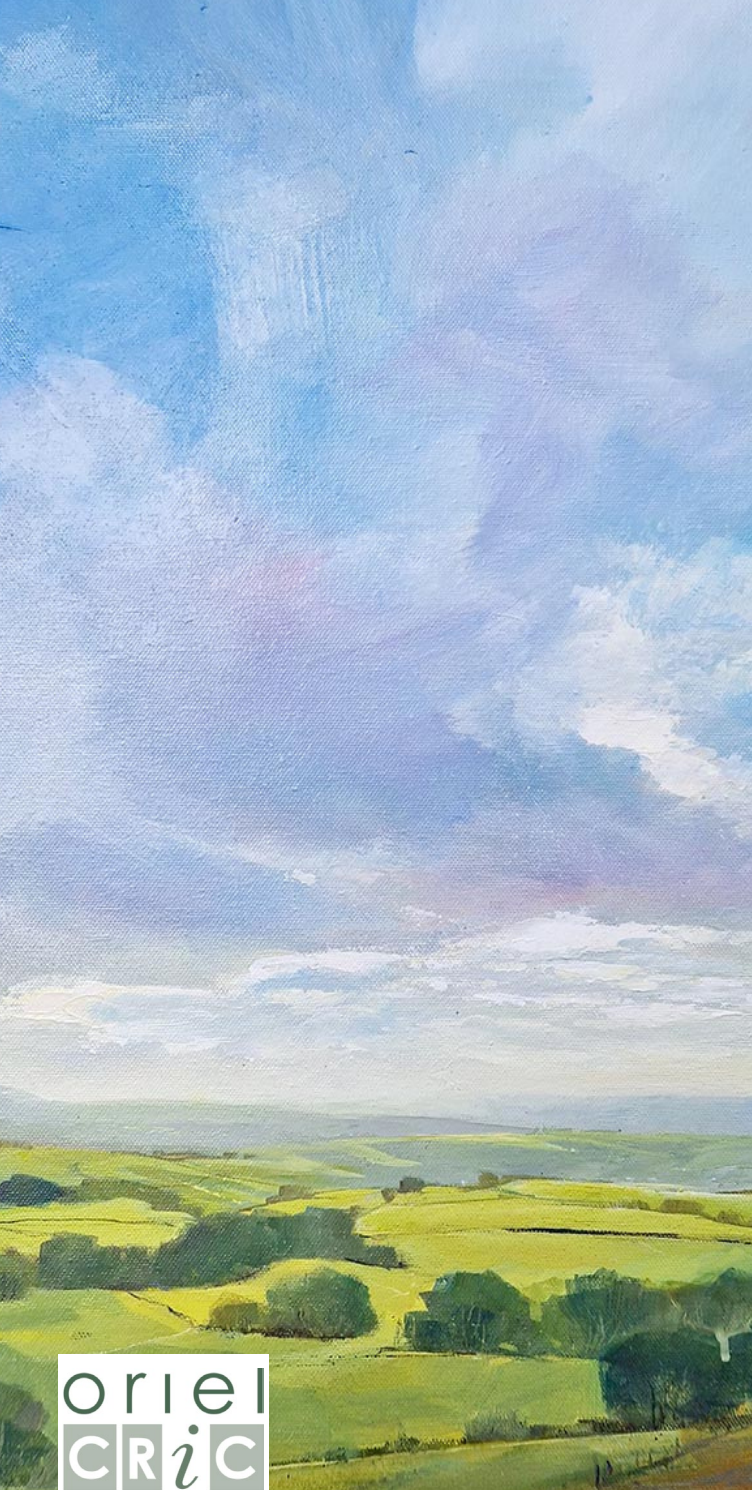
The Oriël CRiC gallery, in the heart of unique town of Crickhowell, has gained a reputation for presenting an extensive and varied range of high quality work and well-presented exhibitions of regional and visiting artists while creating an

open and welcoming atmosphere to all visitors. With its programme of changing exhibitions it is always worth visiting.



*Tree by Martin Truefitt-Baker
& 'Broken Window' by Kay Leverton*

Oriël CRiC Gallery, Beaufort Street, Crickhowell, NP8 1BN For more information on the Open Art exhibition, please contact Suzette Pratten at gallery@visitcrickhowell.wales or visit www.orielcric.wales



oriel
CRIC
gallery

Ali Edgson



Tim Rossiter



Karlin Rushbrooke



Rhian Symes

LIFE : FULL COLOUR

When we opened the doors to our little yellow gallery in the late summer of 2020 it was at the height of a global pandemic. It's challenging starting a new business in any circumstances, but I'm delighted to say we're still here. Thanks to our growing colony of professional artists and enthusiastic art collectors, we enter 2024 on the front foot.

And we've not stopped. We've opened our Art Atelier and wine bar "Y Segontwm", plus a bespoke picture framing business led by local professional Welsh craftsmen.

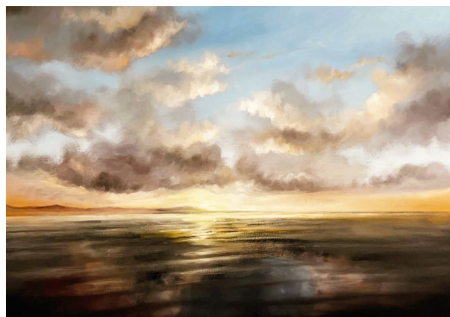
Visitors to Caernarfon are saying they're making Life: Full Colour a key part of their tour. It's great to be a destination for fine art in North Wales in such a short time. More to come...



Sara McKee FRSA



'The Mackerel' by Jocelyn Roberts
£1500



'As the sun resets' by Nathan Jones
£1500



'Rocks and Foxgloves' by Jill Jones
£850



'After the Rain' by Dermott Ruddock
£625

Opening 20th January 2024 – The Artist Colony Show

Led by artist in residence, Jocelyn Roberts, we're bringing a cornucopia of colour and contrast from our colony of talented artists. We'll have the latest artworks from Jos, Jill Jones, Dermot Ruddock, Nathan Jones and more. And all available to buy on Collectorplan 0% finance. See you in Caernarfon in January and February.



**Artist in Residence
Jocelyn Roberts**



Nathan Jones



Jill Jones



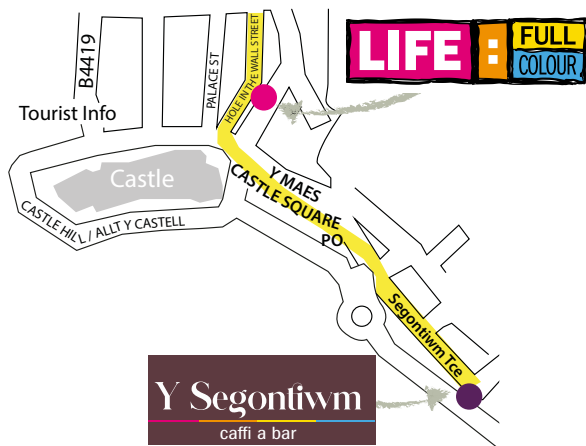
Dermott Ruddock



Visit our **NEW ONLINE ART STORE** • www.lifefullcolour.co.uk

Visit us • 23-25 Hole in the Wall Street, Caernarfon.

Visit our **Atelier & wine bar** • Y Segontiw, Segontiw Terr, Caernarfon.



Get in touch

- ✉ hello@lifefullcolour.com
- 🌐 www.lifefullcolour.com

Connect with us

- 📷 @lifefullcolour1st
- 📘 @LifeFullColour1st
- ✂ @LifeFullColour1

Treat yourself in 2024...

“I look forward to welcoming you at my studio this year.

As well as a large selection of my works currently out in galleries across Wales, I also keep a wide range of originals on display in my working studio, based in Talbenny, Pembrokeshire.

I specialise in seas, skies and also abstract works; there's plenty of choice, along with a large range of prints, framed prints and greetings cards.

You can purchase from my website online 24/7 or come along to the studio to browse and buy - we're dog friendly, and open most days 10am - 3pm”



Gallery owner, Jill Jones

A stylized, handwritten signature in black ink, consisting of a large 'J' followed by a cursive 'Jones'.



'Prussian Blue Spice' £695

*Painting currently featuring in the Royal Cambrian Academy Open Show 2024, 6th Jan - 24th Feb.
Can be purchased directly from the RCA show.*

Jill Jones Fine Art, West Coast Studio, Talbenny, H'west, Pembs SA632 3XB
t: 01437 781386 • m: 07971 794431 • e: art@jilljones.co.uk

Jill Jones Fine Art

www.jilljones.co.uk



'Rhapsody' £695
Available in studio.



'To the Beach!' £425
Available from Life: Full Colour, Caernarfon



'Path 2 the West' £600
Available from Pure Art Gallery, Milford Haven



'Light on at the Point' £475
Available from Ty Crefft, Narberth



www.linkedin.com/in/jilljonesfineart



facebook.com/jilljonesart



instagram.com/jilljones_art



twitter.com/jill_artist



[Jill Jones Fine Art
at Havens Art School](https://www.youtube.com/channel/UC...)



[pinterest.co.uk/
JillJonesFineArt](https://pinterest.co.uk/JillJonesFineArt)



[tiktok.com/
@jilljonesfineart](https://tiktok.com/@jilljonesfineart)

Giles Gallery

Giles Gallery Art Students Exhibition
9th January - 31st January



Giles Gallery Art Students Exhibition 9th January - 31st January

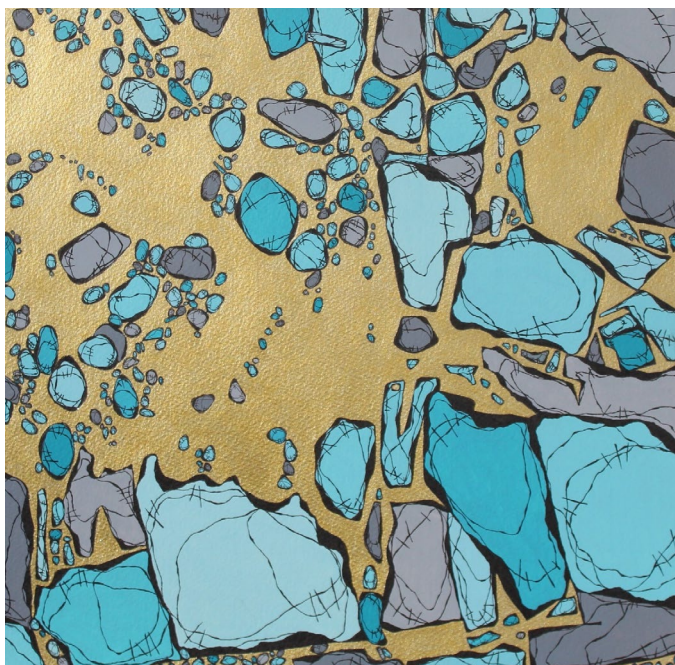


A selection of art work of over 60 artists studying at Giles Gallery under the tuition of Beth Giles BA. From oil to acrylic, watercolour to pen and wash and a vast range of subjects. Landscapes to portraits. Botanical to natural history. Find your ideal original artwork or unique gift at affordable prices.

Tues - Friday 10 - 5pm | Saturday 10 - 4pm

Giles Gallery, Old Methodist Chapel, Cowbridge Rd, Pontyclun, CF72 9EG

Ruth Morgan Exhibition



Artist Statement

“I’ve always trodden a narrow path between fascination and obsession with rocks. I’ve tried to capture the essence and my fascination of rock formations through various media which have now, seemingly naturally, led me into working with glass, specifically stained glass, where light transforms the shapes and colours that I see in rocks.

I get fired up through the process as much as the result. I am always looking for that essence to manifest itself through unique ways, for example, combining the processes of fused glass and stained glass; opacity contrasting against the translucencies of different glass. There are limitless possibilities”

Feb 3rd - Sat 24th Feb

Tel: 0787903592 | Email: beth@gilesgallery.com

www.gilesgallery.com

Dawn Harries Art

Dawn Harries is a Contemporary Landscape Painter who's work is heavily influenced by the Welsh Landscape. Working in a variety of mediums, Dawn creates unique paintings in an impressionistic style, celebrating the British landscapes uplifting effects. Her local surroundings provide a constant source of inspiration, and she paints small plein air studies whenever possible to hone her observational skills.

Dawn uses the effects of colour and contrast in her paintings to capture quiet moments within the landscape, to bring warmth, nature and sea air into your home.

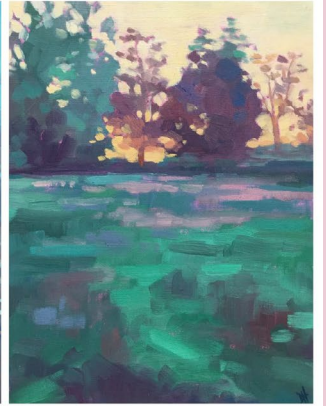
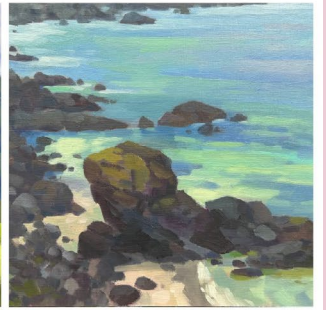
Original paintings can be purchased directly from Dawn's website, or you can view various pieces of her work in person at Ardent Gallery in Brecon, or various venues throughout the year.

Dawn's next solo exhibition is being held at Cyfarthfa Castle Museum and Art Gallery from April to June 2024.

Sign up to Dawn's newsletter to be informed of exhibition news and invites. Scan the QR code or visit website.



Dawn Harries Art



www.dawnharriesart.co.uk

info@dawnharries.com



@dawnharriesart



SCAN ME

Bluestone Gallery

FINE CONTEMPORARY ART & CRAFT



Silver gold and orange sapphire ring by Lydia Niziblian

Ceramic angels by Helen Martino

Large "Feather" bowl by Colin Hawkins

Glass dragon sculpture by Sandra Young

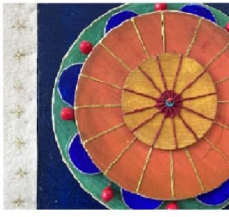
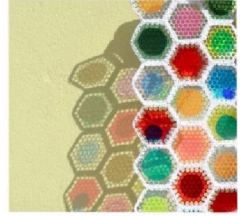
Enamelled silver earrings by Nancy Pickard

"Film Noir" sculpture by Martin Norman

5 Castle Street, Hay on Wye, HR3 5DF

01497 820916

www.bluestonegallery.com



CANTERBURY LOFTS
30 QUEEN STREET
NEATH
SA11 1DL
queenstreetgalleyneth@outlook.com
queenstreetgalleyneth.co.uk

ART TEXTILES:
MADE IN BRITAIN
January 6th -
February 17th 2024



**Colours of the black mountains | 6th February - 7th April | Oil & Oak
Collection of paintings inspired by the mountains around Hay On Wye**

JANET CHAPLIN ART

Janet's art is all about contrasts:- Colour, Textures, Marks, Mood and shape. Working from the landscapes and seascapes of South Wales and more recently river banks and tree lines, she paints semi-abstract paintings both huge and tiny. Her colours are inspired by Derain and the Fauves and her compositions informed by the "rules" such as the rule of thirds and leading lines. But above all her paintings are bright and full of life and atmosphere. Recently she has been focusing on more abstract images of river banks and trees and its these she is exhibiting in gallery Sixteen in Cheltenham. If you wish to discuss commissions, get in touch.



**Sixteen Gallery | Cheltenham
February 22nd - 28th February
Private View Friday 5pm til 8pm
Inspired by Nature**

**Joint exhibition Lynne Littler wire works and
Janet Chaplin.**

**St Fagans Makers Market
15th 16th 17th February**

GALLERIES

Her work can be found in a number of galleries in and around South East Wales and beyond:
Inspired Gallery at Norton House Whitchurch
Gallery 57 in Newport
Makers at Craft Renaissance
Makers Gallery in Abergavenny
Oil and Oak Hay-on-Wye
Boat House Gallery in Tintern
Trading Post Coffee Shop Abergavenny
Nosh Deli Abergavenny

WORKSHOPS

**March 25th | Working with the landscape at
Makers at Craft Renaissance**

Janet will take you through her process of sketching outdoors, then using the sketch you create your own painting, leaving the day with a framed canvas.

Booking via Janet.

**April 7th | Ink & Salt workshop
Oil & Oak | Hay-on-Wye**

You will experiment with the ink and salt technique that Janet uses, working through processes such as stretching your own canvas. Leaving the day with your own framed painting. All materials provided. Booking on the Oil and Oak website.

**Email Janetchaplinartist@gmail.com
Instagram & Facebook: [@Janetchaplinartist](#)
Etsy: Janet Chaplin Artist
Website: Janetchaplin.co.uk**

FINE ART GICLÉE PRINTING

for artists, illustrators & photographers

**GICLEE PRINTS • LIMITED EDITIONS • OPEN EDITIONS
PHOTOGRAPHIC PRINTS • POSTCARDS
GREETINGS CARDS • SCANNING SERVICE**



01446 688424

hello@goodartstudio.co.uk
www.goodartstudio.co.uk



Jill Jones Fine Art



Working Studio and Gallery based in Talbenny, Haverfordwest.

Large selection of originals, Giclée prints and greetings cards. Commissions welcome.

Jill Jones supplies galleries across Wales, and also provides art classes booked to order.

**Dog Friendly • Open 7 days
10am to 3pm**



Gift Vouchers available from £15 upwards. All major cards accepted

Jill Jones, West Coast Studio, Talbenny, H'west, Pembs SA62 3XB
e: art@jilljones.co.uk t: 01437 781386. www.jilljones.co.uk



facebook.com/jilljonesart



jilljones_art



@jill_artist



JillJonesFineArt



The Cheshire School of Jewellery is a fully equipped workshop in the heart of the Cheshire countryside. Offering a range of jewellery making courses for one-off sessions and longer, for techniques such as Silversmithing, they are suitable for a range of abilities. All courses are taught by fully qualified & experienced teacher Lisa Taylor.

**www.cheshireschoolofjewellery.co.uk
cheshireschoolofjewellery@gmail.com
07730 791416**



@thelittlegalleryguide

OUT NOW!



www.littlegalleryguide.com



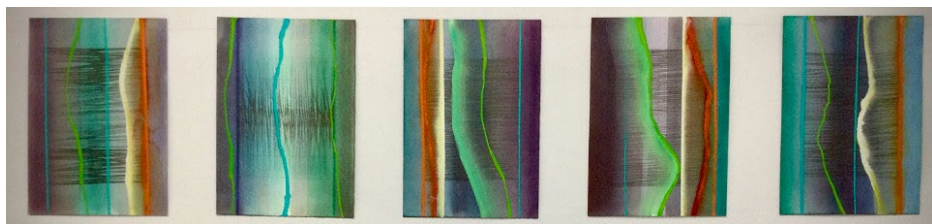
Apple Store Gallery



Rockfield Arts

ASG & Artsite3 Studio Artists

24th January to 16th March 2024



Wednesday to Friday 10am to 3pm

Saturday 10am to 1pm

Unit 1, Rockfield Road, Hereford, HR1 2UA
telephone · 01432 263 937

email · applestoregallery@btinternet.com

web · <https://www.applestoregallery.com>