

EWEMOO  
MADE IN THE MARCHES GALLERY  
BLUE GINGER GALLERY  
JENNIFER ALSOP

APRIL 2020

"During these uncertain times, we wish everyone in our creative community and beyond the very best. Stay safe and stay at home! Take joy in reading all about the other artistic folk out there, get inspired and keep making. Invest in your local makers and independent business' where possible. Brighten up your space with art created by those who truly love what they do. Whilst this will be our last edition of Art Share Love for now, we will be back!"

*Love, Ingrid & Team ASL*

say hello

Advertising & Editorial: Ingrid Nicholas  
Email: [ingrid@artsharelove.com](mailto:ingrid@artsharelove.com)  
Telephone: 07530875629

Get social with Facebook: @ART.SHARELOVEWALES  
Get social with Twitter: @IngridASLW  
Get social with Instagram: @ArtShareLove  
[www.artsharelove.com](http://www.artsharelove.com)

Disclaimer: Reasonable care has been taken to ensure that the information contained in this guide in print and on the website are as up-to-date and accurate as possible, as of the time of publication, but no responsibility can be taken by ART SHARE LOVE Magazine for any errors or omissions contained herein. Furthermore, responsibility for any losses, damages or distress resulting from adherence to any information made available through this guide/website is not the responsibility of ART SHARE LOVE Magazine. Readers are advised to check with listings/article information with event providers to avoid disappointment. No responsibility will be accepted for any errors or omissions.

## Made in the Marches

12 Church St, Kington, HR5 3AZ

*Work encompassing the beauty  
and essence of The Marches,  
from local Artists and Makers.*



Alys Wall

## Homegrown



Ginnette Newman

Following *Yn dod i'r olwg*, (Dave Mullin's three-day-show featuring six Anglo-Welsh artists and makers, 3rd-5th April), our April exhibition, *Homegrown*, celebrates the creative exploits of Kington's irrepressible artisans & craft makers.

[MadeintheMarches.com](http://MadeintheMarches.com) Tues ~ Sat, 10am ~ 5pm



ELLIE BURTON  
GLASS

[www.ellieburtonglass.co.uk](http://www.ellieburtonglass.co.uk)



# Jungle

**Burst into Spring with an online exhibition on the 28th March, celebrating all that's wild, vibrant, dark and mysterious.**

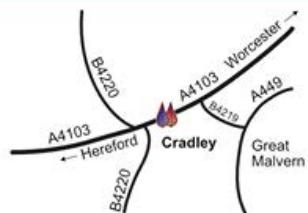
**A selling exhibition of new work by prestigious British artists.**

Tamsin Abbott, Jo Verity, Nigel Lambert, Pratima Kramer, Katerina Christou, Claudia & Paul Petley, Jo Dewer, Kathleen Murphy, Rachel Larkins, Clare De La Torre, Michaela McMillan, Julia Manning, Eleanor Bartleman, Henrietta Corbett, Jeanne Jackson, Elly Mental, Carey Moon, Rae Stevens, Hannah Willow and Sarah Brooker.



**ONLINE ONLY EXHIBITION at [www.blue-ginger.com](http://www.blue-ginger.com)**

***"We will not be open for people to visit the gallery and cafe until further notice. Customers can find us at [www.blue-ginger.com](http://www.blue-ginger.com) or on Facebook and we can post out purchases or do a local doorstep delivery."***



**blue-ginger**

Home End Farm, Stiffords Bridge  
Cradley, Malvern WR13 5NW  
01886 880240  
[www.blue-ginger.com](http://www.blue-ginger.com)



*Jennifer Alsop Art*

**"A** self taught artist with a Science background in Botany and Zoology, I began painting when I had to retire from my business due to illness. I have Exhibited my work at The Mall Galleries, London, on four separate occasions with the Society of Women Artists. I have also exhibited work at Patchings on four different occasions, winning The Burton Manor award with my watercolour painting, Splendour in the Grass. I have Exhibited work at The Taliesin gallery in Swansea, The Pier Head building in Cardiff and The Story Museum, The Hayes, Cardiff. I am Chairman of the South Wales Art Society, Cardiff. I have enjoyed painting courses with artists whose work I really love:- Charles Reid, Judy Whitton, Ann Blockley, Adelene Fletcher, Jean Hanes and at present, I paint on a weekly basis with Arnold Lowrey. My art can be found on my website and can also be found on the SAA website, as well as Artfinder and Etsy."

Though more well known for her botanicals and wildlife work, Jennifer's recent works have taken a more vintage angle. Seen right is this wonderful portrait of Jennifer's uncle, Welsh Boxer, Jonty Alsop, a Lonsdale Belt Winner from 1920.

Also right are these fabulous vintage Gilbert Carsm that were made in Wales.



**Boxer, Jonty Alsop, Lonsdale Belt Winner, 1920**



[www.jennyalsop.co.uk](http://www.jennyalsop.co.uk)

Email: [jennifersop.co.uk](mailto:jennifersop.co.uk)

Artfinder: [jenny-alsop](https://www.artfinder.com/jenny-alsop)

Etsy: [AlsopArt](https://www.etsy.com/shop/AlsopArt)



EweMoo Crafts Ltd

[www.ewemoo.co.uk](http://www.ewemoo.co.uk)

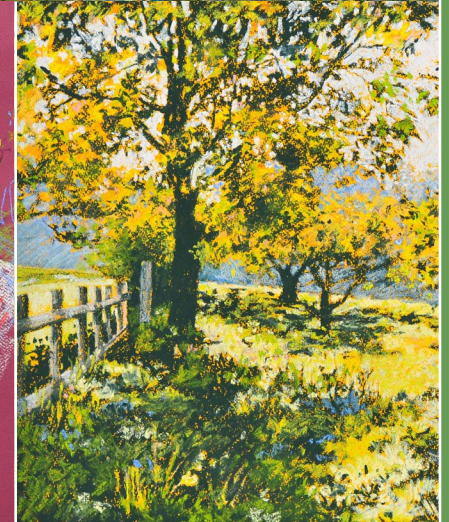
Tel: 07778102238

EWE MOO

STAY SAFE



# Chapel Cottage Studio



Phone: 01873 840282

Mobile: 07935 934898

Email: [info@chapelcottagestudio.co.uk](mailto:info@chapelcottagestudio.co.uk)

[www.chapelcottagestudio.co.uk](http://www.chapelcottagestudio.co.uk)

FACEBOOK: @Chapel Cottage Studio

YOUTUBE ART TUTORIALS: @Jantien Powell at Chapel Cottage Studio



# CRiC is now closed until further notice

.....

However, our team of staff will be continuing  
to work supporting the local community and  
businesses behind the scenes

If you have any questions, queries or just need to use our business services  
you can get in touch with Jan, Suzette or Nikki by ringing 01873 811970  
during business hours or by emailing [tic@visitcrickhowell.co.uk](mailto:tic@visitcrickhowell.co.uk)

We look forward to reopening, but in the mean time, stay safe

- the team @ CRiC  
XXX



Registered charity number: 1106479, company limited by guarantee: 4668297

