

# ART SHARE LOVE

Wales & Borders

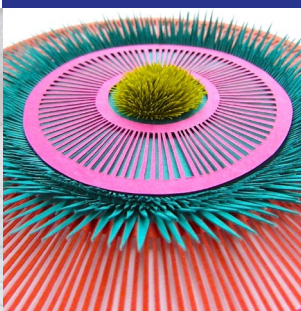


NOV/DEC 2024  
ISSUE 122

Elmslie House | Malvern



ELMSLIE  
HOUSE  
CRAFT FAIR  
[bluemagpie.co.uk](http://bluemagpie.co.uk)



Elmslie House | Giles Gallery | Life Full Colour | Jill Jones Fine Art | Oriel Cric Gallery

Feature: Made By Hand For Christmas | Melanie Made Mud | Tracey-Anne Sitch

Ewemoo | The Feather Lady & David Wettner | Cardiff Christmas Market

Dawn Harries Art | Cheshire School of Jewellery | Ann Catrin Evans | Apple Store Gallery





## November/December 2024 | Cover Art: Elmslie House Craft Fair

Elmslie House  
Garry Jones Ceramics & Studio  
Giles Gallery  
Life Full Colour  
Jill Jones Fine Art  
Oriel Cric Gallery  
Feature: Made By Hand For Christmas  
Melanie Made Mud Pottery Classes  
Tracey-Anne Sitch  
Ewemoo  
The Feather Lady & David Wettner Exhibition  
Cardiff Christmas Market  
Dawn Harries Art  
Cheshire School of Jewellery  
Ann Catrin Evans  
Apple Store Gallery

*Say hello!*

Email: [ingrid@artsharelove.com](mailto:ingrid@artsharelove.com)

Tel: 07530875629

[www.artsharelove.com](http://www.artsharelove.com)

Sister publication: [www.littlegalleryguide.com](http://www.littlegalleryguide.com)

---

Disclaimer: Reasonable care has been taken to ensure that the information contained in this guide in print and on the website are as up-to-date and accurate as possible, as of the time of publication, but no responsibility can be taken by ART SHARE LOVE WALES & BORDERS Magazine for any errors or omissions contained herein. Furthermore, responsibility for any losses, damages or distress resulting from adherence to any information made available through this guide/website is not the responsibility of ART SHARE LOVE WALES & BORDERS Magazine. Readers are advised to check with listings/article information with event providers to avoid disappointment. No responsibility will be accepted for any errors or omissions.

# Garry Jones Ceramics & Studio



## Christmas Events & Opening Hours

---

**Royal Welsh Winter Fair**  
**Mon 25th**  
**& Tues 26th Nov**

**Sat 7th & 8th Dec**

**10am - 5pm**

**Motte House**  
**Walford**  
**Nr. Leintwardine**  
**SY7 0JT**

**Tel: 07886 412987**  
**Email: [garryjones1962@outlook.com](mailto:garryjones1962@outlook.com)**  
**Facebook: [@Garryceramic](https://www.facebook.com/Garryceramic)**  
**Instagram: [@garryjones1962](https://www.instagram.com/garryjones1962)**





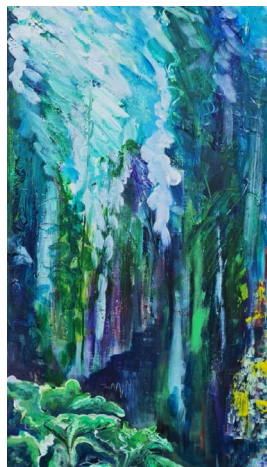
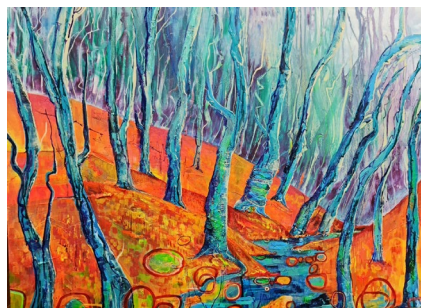
## Janet Chaplin Art Exhibition at Giles Gallery from 2nd to 23rd November

Janet has always lived near the sea and is drawn to paint the coast of South Wales from the Gower to Pembrokeshire.

**C**olour and Contrasts is a collection of work by Janet.

Albeit a mixed show Janet hopes these paintings act as a journey into 'Colour and Contrast' through her unique perspective.

Living in Abergavenny Janet constantly watches the hues and light on the hills around her home and then painting them in her studio at Craft Renaissance.



Tues - Friday 10 - 5pm | Saturday 10 - 4pm  
Giles Gallery, Old Methodist Chapel, Cowbridge Rd, Pontyclun, CF72 9EG

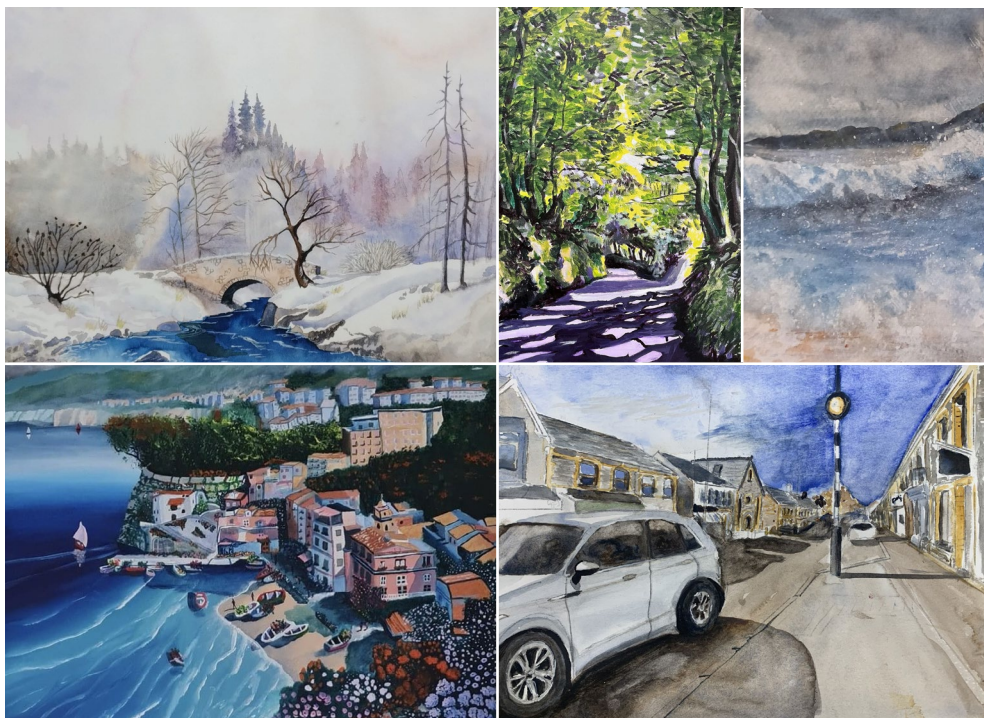




## **Giles Gallery Art Students Exhibition**

29th November - 24th December

7th January - 1st February



A selection of art work of over 50 artists studying at Giles Gallery under the tuition of Beth Giles BA. From acrylic to oil, watercolour to pen and wash, and a vast range of subjects.

Landscapes to portraits, botanical to natural history.

Find your ideal original artwork or unique gift, at affordable prices.

Tel: 07879035921 Email: [beth@gilesgallery.com](mailto:beth@gilesgallery.com)

[www.gilesgallery.com](http://www.gilesgallery.com)

# END OF THE YEAR SHOW

This superb show features 100 of the best original artworks. Ensure you secure your special piece for Christmas!



*'Forever' by Jill Jones FRSA, £770*

“In the blue of the skies,  
In the green of the fields,  
In the depth of the oceans,  
or deep underground,  
as I touch your face  
(like a gentle breeze)  
I will love you Forever.”



*'Still Life with Lemons' by Alison Ross, £250*



*'Coffee Pot' by Alison Ross, £250*

**2nd November -  
23rd December  
2024**

**A celebration of the best  
in shows throughout the year.**



*'Release' by Jill Jones FRSA, £775*



*'Gold-bathing' by Jill Jones FRSA, £750*



*'Primrose Hill' by Judith Donaghy' £750*

We're open Tuesday to Saturday and you can also purchase online  
any time at [www.lifefullcolour.co.uk](http://www.lifefullcolour.co.uk)

**See you in Caernarfon! 6 Palas Street, LL55 1RR**



*Now at*





# Gifts large or small!

Buy the original, or buy a Jill Jones Special Edition A5 Notebook with it on the cover!



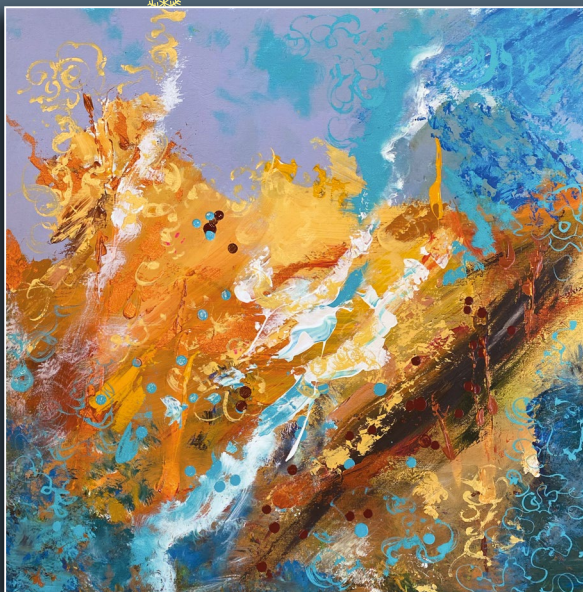
*'Drops of Jupiter'* (1.5 x 1.2m) Original £1995  
available from [www.lifefullcolour.co.uk](http://www.lifefullcolour.co.uk)  
or you can buy a Special Edition A5 lined  
notebook with it on the cover at  
[www.jilljones.co.uk](http://www.jilljones.co.uk)



Jill Jones FRSA Special Edition notebook with BIC Grip Rollerball pen  
(cover pic 'Drops of Jupiter') £15.00 from [www.jilljones.co.uk](http://www.jilljones.co.uk)

# Jill Jones Fine Art.

[www.jilljones.co.uk](http://www.jilljones.co.uk)



'Muse' (73 x 73cm) Original £770  
available from [www.lifefullcolour.co.uk](http://www.lifefullcolour.co.uk)  
or you can buy a Special Edition A5 lined  
notebook with it on the cover at  
[www.jilljones.co.uk](http://www.jilljones.co.uk)



**Jill Jones FRSA Special Edition notebook (cover pic 'Muse') £13.50  
from [www.jilljones.co.uk](http://www.jilljones.co.uk)**



[www.linkedin.com/in/  
jilljonesfineart](http://www.linkedin.com/in/jilljonesfineart)



[facebook.com/  
jilljonesart](https://facebook.com/jilljonesart)



[instagram.com/  
jilljones\\_art](https://instagram.com/jilljones_art)



[twitter.com/  
jill\\_artist](https://twitter.com/jill_artist)



[Jill Jones Fine Art  
at Havens Art School](https://www.youtube.com/channel/UCatHavensArtSchool)



[pinterest.co.uk/  
JillJonesFineArt](https://pinterest.co.uk/JillJonesFineArt)



[tiktok.com/  
@jilljonesfineart](https://tiktok.com/@jilljonesfineart)

Jill Jones Fine Art, West Coast Studio, Talbenny, Haverfordwest, Pems SA62 3XB  
t: 01437 781386 • m: 07971 794431 • e: [art@jilljones.co.uk](mailto:art@jilljones.co.uk)



*Driftwood sculpture by Linda Beech*

**A**s thoughts turn to the season of gift giving the selection ceramics, glass, sculpture and jewellery on offer alongside paintings and prints adds to the tempting variety in the Oriel CRiC Gallery, Crickhowell. The autumn exhibition continues until mid-November and will be followed by the popular festive Christmas exhibition. The 5th of December will see Late Night Opening in Crickhowell – always an evening that showcases the town at its charming best. The retail area in CRiC and the gallery upstairs boasts a bountiful display showcasing Welsh skill and craftsmanship.



*Top - Bottom: Conversation - Rook & Blue Tit by Kay Leverton, horse head sculpture by Gena Davies and bronze by Philip Hearsey, Autumn Garden by Tim Rossiter, Whispering Tree Monotype by Beth Knight, Pebbles by Christine Gittins.*

*Adjacent images - Nick Pritcard, Jason Wilkins, Karlin Rushbrooke and Christine Gittins*

**[www.visitcrickhowell.wales](http://www.visitcrickhowell.wales)**  
**Crickhowell Resource & Information Centre, Beaufort Street,**  
**Crickhowell, NP8 1BN**  
**Tel 01873 811970**  
**Opening hours 10am to 5pm, Monday to Saturday**





oriel  
CRIC  
gallery

[www.orielcric.wales](http://www.orielcric.wales)



# Made By Hand For Christmas...

## *Shop Original Gifts By The Best Artists & Makers*

Find the perfect Christmas gifts right here, crafted with passion by professional artists and makers.

Each piece tells a unique story and is truly one-of-a-kind. Explore our curated selection of original work that makes for unforgettable Christmas gifts.

Each featured item captures the spirit and dedication of its maker. Embrace the Christmas season with truly

unique gifts.

Make this Christmas special with handcrafted gifts that ooze authenticity and talented craftsmanship. This Christmas, surprise your loved ones with something truly extraordinary, made by hand with love.

### 1 Ether, Silver & Home

[www.ethersilverhome.com](http://www.ethersilverhome.com)  
Instagram - @ethersilverhome

This year the combination of colour and texture have played a role in building the Christmas collection for Ether, Silver & Home.

Faye's decorations return using small off cuts combined with vibrant coloured resins creating unique decorations for the home. Alongside these, a new range of bud vases have launched this year! Working with simple shapes and forms to enhance the beauty of the wood used, from Spalted Beech and Oak to the rich tones of reclaimed Iroko and Sapele. See the full collection online or at one of the many markets listed on the website across Wales this festive season.





2

## Lisa Lane Jewellery

Work is also available on [www.lisalanjewellery.co.uk](http://www.lisalanjewellery.co.uk)

Instagram: @lisalanjewellery

Facebook @lisalanjewellery

Email: [lisa@lisalanjewellery.co.uk](mailto:lisa@lisalanjewellery.co.uk)

Lisa Lane is a Welsh independant jewellery designer maker, specialising in creating unique contemporary jewellery using traditional techniques.

Inspired by organic aesthetic quality of organic forms, Lisa is developing her research through the unexpected patterns layers textures and repetition of shapes found within nature. Primarily using two jewellery techniques, the ancient technique of granulation where by granules are individually soldered to each other to create a form and the transfer of an image which is acid etched onto silver.

Lisa will be at Artisan Events Wales Winter Market in Tretower Court Crickhowell on the 9th and 10th of November 10am - 4pm, Abergavenny Market Hall on the 24th November 10am to 4pm and Theatr Brycheiniog Brecon on the 30th of November 10am - 4pm.



3

## Louise Lily King

[www.louiselilyking.com](http://www.louiselilyking.com)

Instagram: @arianwenandtheowl

Facebook: Louise Lily King - Artist/Maker

Etsy: [www.etsy.com/uk/shop/LouiseLilyKing](http://www.etsy.com/uk/shop/LouiseLilyKing)

The work of Pembrokeshire-based artist Louise Lily King explores the role of nature in mythology and folklore; creating highly detailed drawings, Louise aims to capture the character and symbolism of the wild creatures and plants which play such an important role in these stories and traditions. Prints of her drawings are often embellished by hand with metal leaf, creating subtle metallic details which glint and glimmer in the light.

Giclee prints can be purchased via her Etsy shop and selected outlets; for news of exhibitions and events please visit her website and social media platforms.





4

## Elaine Jones Art

elainejonesart@gmail.com

07973687076

Facebook - @elainemjart

Instagram - @elainejonesart

www.elainejonesart.bigcartel.com

Christmas is a time for giving, and what better gift can be given than a handmade item made with love and care?

With artworks and crafts to suit all pockets, Elaine creates a variety of gifts, perfect for the festive season. From original paintings, to decoupage art, to crochet items, the list goes on.

Based near Llandovery, Elaine works in her old railway carriage studio, taking much inspiration from her surroundings in the Carmarthenshire countryside.

Original artworks, fine art prints, along with many other artworks and crafts can be purchased directly from her website, social media and local Christmas markets.



5

## 'The Feather Lady' - Mandi Baykaa-Murray, Artist

website: [www.thefeatherlady.co.uk](http://www.thefeatherlady.co.uk)

Instagram: mandibm

Facebook: wildwithpaintbrushes

email: [mandi@thefeatherlady.co.uk](mailto:mandi@thefeatherlady.co.uk)

Mobile: 07754 516911

Renowned for her creative use of feathers, Mandi, affectionately known as 'The Feather Lady,' crafts unique artworks that are as inspiring as they are beautiful.

Utilising real moulted feathers as her canvas, each carefully collected for its unique beauty, Mandi applies delicate layers of acrylic paint to bring her intricate visions to life.

Now, introducing a new canvas of beautiful leather handbags, on which she paints exquisite birds, Mandi brings her artistic creativity to practical, wearable art which can be enjoyed on a daily basis. Unique Christmas gifts celebrating nature which appeal to nature lovers and art enthusiasts alike.

## 6 Tideline Ceramics

**@tidelineceramics on insta & facebook**

Taking inspiration from the Welsh coast, Roz Owen makes small batch and one of a kind stoneware ceramics. You can find Tideline Ceramics at:

- The Newport Collective Gallery, Newport, Pembrokeshire
- Found Gallery, Dunbar, Lothian
- Metamorphosis The Gallery, Wells-Next-the-Sea
- 2 London Place, Borth, Ceredigion

Or at these events:

Blue Magpie, Elmslie House, Malvern  
15-17 Nov

The Bay Gallery, Corn Exchange, Cardigan  
24-30 Nov

Borth Craft Fair, Borth, Ceredigion 1st Dec

And of course at

**[www.tidelineceramics.co.uk](http://www.tidelineceramics.co.uk)**



## 7 Cute Creations By Ceri

**Tel; 07772629871**

**Email: [cerijsmith@aol.co.uk](mailto:cerijsmith@aol.co.uk)**

**Insta @cutecreationsbyceri**

**Fb @cutecreationsbyceri**

**X @fafferoffluff**

**Dragons are insta @dragonsofshropshire**

**Fb @dragonsofshropshire**

**X @SalopianDragons**



Ceri lives & works in South Shropshire needlefelting miniatures. She adores making toadstools, but will try her hand at pretty much anything. Christmas makes start being ordered in June/july. Her Christmas Pudding Baubles have been a firm favourite since she created them back in 2016. Cute Christmas decorations are always fun to make; kawaii christmas cacti, cute creatures in santa hats, bears with stockings, penguins, sheep, hedgehogs, you name and she can make it festive.

You can find her work for sale online at [ConsciousCrafties.Com](http://ConsciousCrafties.Com) and also stocked in Purple Panda in Ludlow, Kaboodle in Church Stretton and in Burway Books, Church Stretton.

## ***Join us at the Elmslie House for our ninth pre-Christmas Blue Magpie Contemporary Craft Fair.***

**W**e'll be open for three days from Friday 15th - Sunday 17th November from 10.30 – 4.00pm each day.

With a daily changing line up of over 60 designer makers exhibiting over two floors, it's the perfect opportunity to meet artists from all over the UK and to shop small and handmade with unique and individual items on sale.

This year Elmslie will have makers from as far afield as - Ireland, The Isle of Wight, St Ives, Macclesfield - and seemingly everywhere else in between - which is a real testament to the growing Family of Makers that is such an integral part of the Blue Magpie event.

As ever the tea-room at Elmslie will be open to serve up your favourite home-made cakes and cheese scones, and other refreshments. Admission is £3 for

adults, accompanied children free, which allows entry all weekend. You'll also have a chance to enter a raffle to win a bag of goodies which would make the perfect Christmas hoard for you or a loved one.

For more details on exhibiting makers please visit -

**[www.bluemagpie.co.uk](http://www.bluemagpie.co.uk)**  
**or follow us**  
**@bluemagpiecraft**



You'll find the Blue Magpie fair just a short walk from the centre of town – at 8 Avenue Road, WR14 3AG.

To find out more about other events please visit -

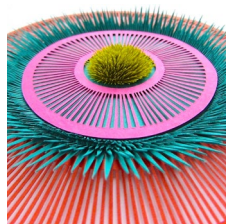
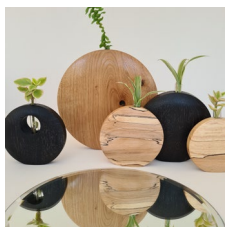
**[www.elmsliehouse.co.uk](http://www.elmsliehouse.co.uk)**



# CONTEMPORARY CRAFT FAIR

Friday 15th - Sunday 17th November 2024

10.30am - 4.00pm. Adults £3, accompanied children free



@bluemagpiecraft  
[www.bluemagpie.co.uk](http://www.bluemagpie.co.uk)



Join us and 60 makers to find that perfect Christmas gift.  
Daily changing line up over two floors - with a tea room!

**Wristband allows entry all weekend**

Elmslie House, 8 Avenue Road, Malvern WR14 3AG



# *Melanie Made Mud*

Pottery Wheel Sessions



2 hour pottery wheel taster for  
groups of up to 5 people  
£55pp inc. clay glaze & firing



One to One pottery wheel session,  
£65 for 2 hours  
Day experiences and 3 week  
courses also available from my  
cosy home studio



Prepare your clay  
Learn to centre  
Throw 3 to 4 pots  
Choose from 5 glaze finishes Pots  
ready in 4 weeks

*Gift Vouchers Available*

Llanelly Hill | Abergavenny

[www.melaniemademud.com](http://www.melaniemademud.com)



**Natural History Watercolour Artist**

## **Tracey-Anne Sitch**

**You can see my work at:**

**The Frogmore Street Gallery**

**([www.frogmorestreetgallery.co.uk](http://www.frogmorestreetgallery.co.uk))**

**Oriel Cric Gallery**

**([www.visitcrickhowell.wales](http://www.visitcrickhowell.wales))**



Please see my Facebook and Instagram pages for  
details of local Christmas

shopping events where I will be selling my  
paintings, prints, books, cards and small gift items



# Ewemoo

## Foot stools

Find us at :

**Gloucester Quays 16th & 17th Nov**

**Builth Wells Winter Fair 25th & 26th Nov**

**Cardiff Christmas Craft Market**

**Nov 14th & Dec 15th**

**Brecon Craft Fair every 3rd Sat  
of the month**



**ewemoo**

**[www.ewemoo.co.uk](http://www.ewemoo.co.uk)**

**Tel: 07778102238**

**Unit 2 Ystradgynlais workshops SA9 1BS**

# COMING SOON... POP-UP ART EXHIBITION

DAVID WETTNER

MANDI BAYKAA-MURRAY,  
THE FEATHER LADY



ORIGINAL ART \* PRINTS \* CARDS

\*XMAS GIFTS\*

NO.1 GOMOND STREET  
HEREFORD

WED 20TH - SUN 24TH NOV 2024

[www.thefeatherlady.co.uk](http://www.thefeatherlady.co.uk)

[www.davidwettnerart.co.uk](http://www.davidwettnerart.co.uk)



# Discover what makes the Cardiff Christmas Market so unique

## Cardiff Christmas Market 2024

Thursday 14 November to Monday 23 December

Trading Hours:

Monday to Saturday 10am to 6pm

Sunday 10am to 5pm

**Craft\*folk** have organised and developed the Cardiff Christmas Market in the pedestrian heart of Cardiff City Centre for 30 years. We continue to be committed to providing a platform for artists, crafts people and food and drink producers to exhibit and sell their exceptional work directly to the general public. In today's economic climate it is more important than ever to protect our arts and crafts heritage, to ensure that there is always a place in retailing for originality and diversity. We hope that this is one of the reasons why our Christmas Market has been featured among the best top ten markets in the UK for the many years.

Our beautifully decorated wooden stalls are located outdoors in St John Street, Working Street, Trinity Street and Hills Street. These pedestrian streets are very wide and so present no problem in allowing everyone to browse and shop safely. Not everyone takes part for the full event so you will find new exhibitors work to browse, interspersed among those with us for the full event, making the market an interesting place to visit every week.

Unlike the Christmas Markets you may find in other cities, when you visit Cardiff, you can be assured that you will be purchasing

original work from each and every one of our talented makers: bespoke silver jewellery, wooden turned gifts, original artwork across all mediums, beautiful fused glass work, hand-thrown ceramics, handmade quilts and textiles and luxurious creams and candles to name just a few, combined with a variety of seasonal food and alcohol producers to create a vibrant Christmas atmosphere. You can also chat with them about their work, the making process, and discuss commissions if you wish.

Whilst we welcome returning exhibitors none of them rest on their laurels. As their craft is also their business, they are always creating new pieces of work thus ensuring that their stalls always look fresh and innovative. You will also see lots of new faces, testing out the market with their own work in our Taster Stalls, located in Trinity Street.

A comprehensive list of all participants can be viewed on our website now, including their trading dates.

**Craftfolk**

**07974561514**

**[jane@craftfolk.com](mailto:jane@craftfolk.com)** **[www.craftfolk.com](http://www.craftfolk.com)**  
**[www.cardiffchristmasmarket.com](http://www.cardiffchristmasmarket.com)**



# Cardiff Christmas Market

AN **ALTERNATIVE  
OUTDOOR  
SHOPPING  
EXPERIENCE**

[craftfolk.com](http://craftfolk.com)

[cardiffchristmasmarket.com](http://cardiffchristmasmarket.com)



- Organised by Craft\*folk
- Meet the makers
- 70 wooden stalls
- Buy local, buy handmade

Rolling programme of over 150 exhibitors

**Thursday 14 Nov 2024  
to Monday 23 Dec 2024**



**T: 02920 514732 M: 07974561514**

# Dawn Harries Art

Dawn Harries is a Welsh Contemporary Landscape Painter, using the natural beauty of the British countryside as her inspiration, especially the rolling hills and rugged coastline of Wales.

Dawn uses the effects of colour and contrast in her paintings to capture the character and atmosphere of the landscape in an impressionistic style, bringing a sense of place, warmth and familiarity into your home.

Whether you're looking for a small painting to gift to a loved one, or a statement piece for above your fireplace, browse available pieces on Dawn's website. A selection of work is also available at Ardent Gallery, Brecon, plus Victoria Fearn Gallery in Rhiwbina, Cardiff, for their Christmas exhibition.

Sign up to Dawn's newsletter to be kept informed of exhibition news and invites. Scan the QR code or visit the website.

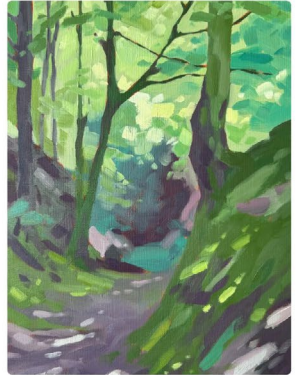
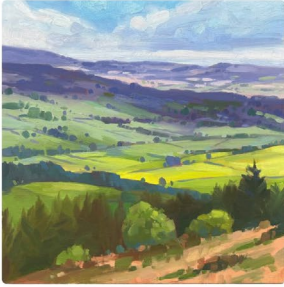


[www.dawnharries.co.uk](http://www.dawnharries.co.uk)

email: [info@dawnharries.com](mailto:info@dawnharries.com)



# Dawn Harries Art



[www.dawnharriesart.co.uk](http://www.dawnharriesart.co.uk)  
[info@dawnharries.com](mailto:info@dawnharries.com)



@dawnharriesart



SCAN ME



Beautiful  
iron and gold  
jewellery with  
diamonds &  
coloured  
gemstones.  
Iron love  
spoons,  
sculptural  
door furniture,  
architectural  
and public  
artworks.

ANN CATRIN EVANS



ANN CATRIN EVANS  
[acatevans@gmail.com](mailto:acatevans@gmail.com)



Siop iard  
Stryd y Plas, Caernarfon  
Gwynedd, Cymru, LL55 1RR  
01286 672 472

[www.anncatrinevans.co.uk](http://www.anncatrinevans.co.uk)  
[www.siopiard.com](http://www.siopiard.com)

ers.1989  
CYMRU

# Vale Makers Markets 2024

beautiful crafts,  
locally  
made



valemakers.org

10.00am - 4.00pm

Saturday  
**September 28th**  
Cowbridge Town Hall

Saturday  
**October 26th**  
Cowbridge Town Hall

Sunday ★ Christmas Market  
**November 10th**  
Penarth Pier Pavillion

Saturday ★ Christmas Market  
**November 23rd**  
Parish Hall, Dinas Powys

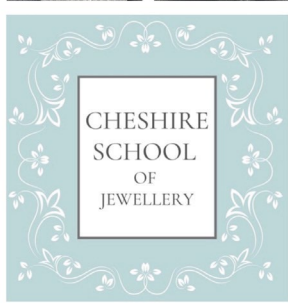
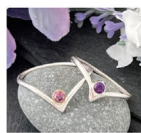
Saturday ★ Christmas Market  
**November 30th**  
Cowbridge Town Hall

FREE ADMISSION    DISABLED ACCESS

*The Cheshire School of Jewellery is a fully equipped workshop in the heart of the Cheshire countryside offering a range of jewellery making courses suitable for a range of abilities, including one-off workshops and longer courses in Silversmithing.*



*All courses are taught by fully qualified & experienced teacher Lisa Taylor.*

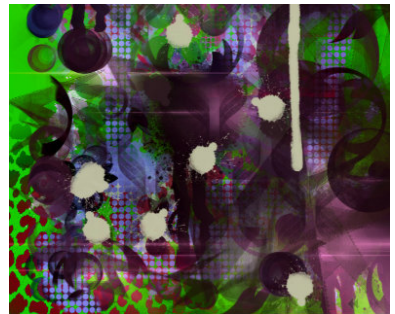


cheshireschoolofjewellery@gmail.com | 07730 791416  
www.cheshireschoolofjewellery.co.uk



# Apple Store Gallery

**Studio Artists @ ASG**  
**Studio Artists & Guests**  
**To 16th November**



**Christmas Delights**  
**Seasonal Artworks**  
**20th Nov to 21st Dec**

**Wednesday to Friday 10am to 3pm**  
**Saturday 10am to 1pm**



**h.Art Christmas Events Sats/Suns**  
**30.11/01.12 & 07.12/08.12**  
**10am to 3pm**

**Unit 1, Rockfield Road, Hereford, HR1 2UA**  
**telephone · 01432 263 937**  
**email · [applestoregallery@btinternet.com](mailto:applestoregallery@btinternet.com)**  
**web · <https://www.applestoregallery.com>**