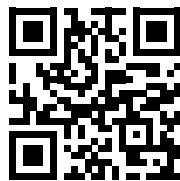


ART SHARE LOVE

Wales & Borders



JUNE 2018
FREE ARTS MAGAZINE
ISSUE 58

COVER ART: CALLIE-ANNE HEALEY
Winner of Crickhowell's Open Art Competition 2018



CRICKHOWELL OPEN ART WINNERS
EWEMOO
IPIXEL ART



CAERLEON ART FESTIVAL
ART IN PENALLT
ART WORKSHOPS



JUNE EDITION!



EDITORIAL:

CRICKHOWELL OPEN ART WINNERS
CAERLEON ARTS FESTIVAL
EWEMOO
ART IN PENALLT

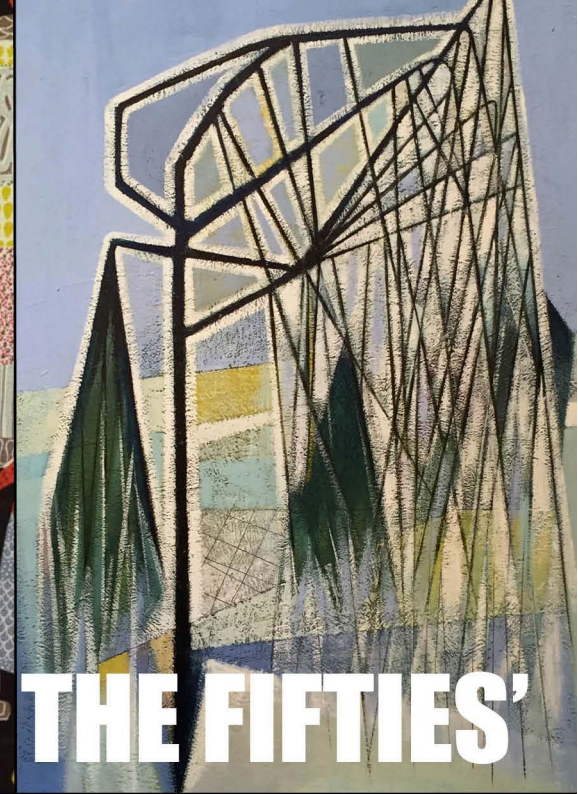
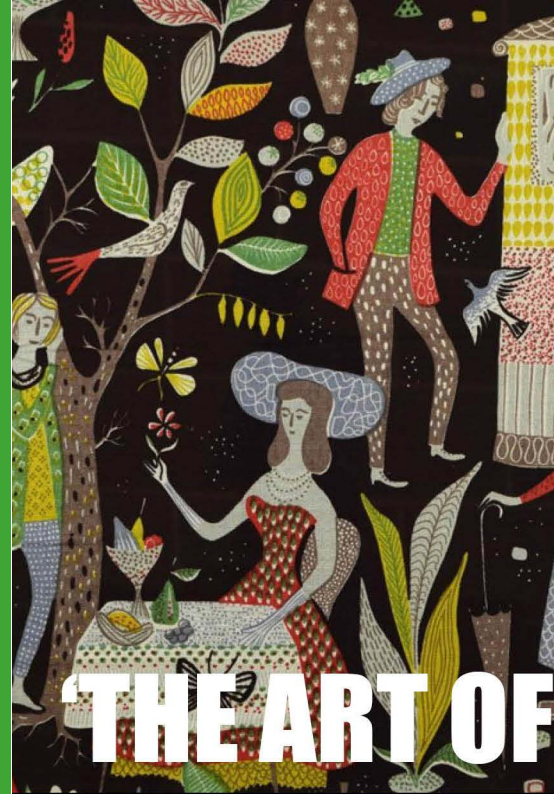
say hello

Advertising & Editorial: Ingrid Nicholas
Email: ingrid@artsharelove.com
Telephone: 07530875629

Get social with Facebook: @ARTSHARELOVEWALES
Get social with Twitter: @IngridASLW
www.artsharelove.com

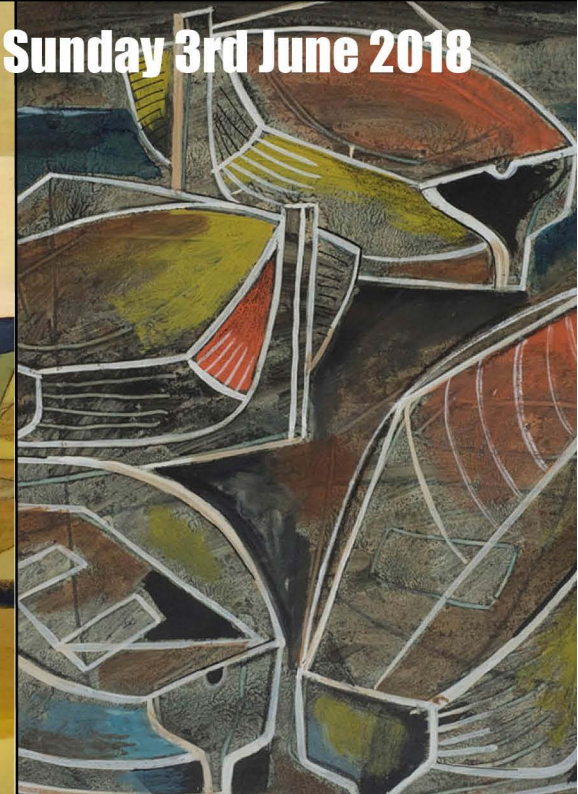
Disclaimer: Reasonable care has been taken to ensure that the information contained in this guide in print and on the website are as up-to-date and accurate as possible, as of the time of publication, but no responsibility can be taken by ART SHARE LOVE Magazine for any errors or omissions contained herein.

Furthermore, responsibility for any losses, damages or distress resulting from adherence to any information made available through this guide/website is not the responsibility of ART SHARE LOVE Magazine. No responsibility will be accepted for any errors or omissions.



'THE ART OF THE FIFTIES'

Saturday 26th May - Sunday 3rd June 2018



CAERLEON FESTIVAL THE SIXTEENTH!

Don't miss it! Come to Caerleon!
From the 5th to 15th July there will be events in the historic and legendary Town of Caerleon - Roman Fortress with Amphitheatre, Baths, Barracks, Museum; site of Norman castle; home of the Legend of King Arthur.

Here are just some of the highlights:

Shakespeare's **"THE WINTER'S TALE"** in the Amphitheatre with Choir, and buffet bar - Friday 6th.

"LITERATURE on the LAWN" of the Priory Hotel with twelve authors & poets in conversation during the day and in the evening - Mab Jones & Murray Lachlan Young on stage! - Saturday 7th.

"SO LONG FRANK LLOYD WRIGHT" - a tribute to "The greatest architect of the 20th century" with panel of experts led by Jonathan Adams; and in the evening **"THE COLLECTIVE"** - a 17 piece band - in the Festival Marquee at the Priory Hotel- Monday 9th.



"The MORRISTON ORPHEUS CHOIR" with soprano Chloe Angharad Morgan in St. Cadoc's Church - Wednesday 11th.



"The RED HOT POKERS" whose members have played with Van Morrison, Eric Clapton etc - in the Marquee of the Bell Inn - Friday 13th.

"The BIG FREE WEEKEND" from morning 'til night bands and performers too many to mention on both banks of the River Usk - the Hanbury Inn Quayside & the Bell Inn with Arts/Crafts/Sculpture Fair and entertainment on the Festival Meadow - Saturday/Sunday 14th/15th.

"Tell me what else were you going to do?"

Tim Davidson - Festival Chair

Red Hot Pokers
Friday 13th July
8.30pm
The Bell Inn, Caerleon, NP18 1QQ
Tickets available £8 from:
Post Office Caerleon • Diverse Vinyl, Charles Street, Newport
& online at www.caerleon-arts.org

www.thefestivalplayers.co.uk
Shakespeare's
Intriguing Romance

THE WINTER'S TALE
Directed by Michael Dyer
Music by Johnny Coppin

THE Festival Players
THEATRE COMPANY

16th



Ewemoo Foot Rests

Visit us at:

Tafwyl Cardiff 2018
CARDIFF'S WELSH ARTS & CULTURE
FESTIVAL

Cardiff Castle - 30 th June 1st July

Cardiff International Food & Drink Festival 2018
Roald Dahl Plas, Opposite the Millennium Centre,
Cardiff Bay

Friday 6 July to Sunday 8 July 2018

Trading hours: Friday 12 noon to 9pm, Saturday
11 am to 9pm and Sunday 11am to 7pm
In Craft*folk red/white canvas stalls

Caerphilly Big Cheese Festival 2018

Caerphilly Castle Moat

Saturday 28 July and Sunday 29 July 2017

Trading hours: Saturday and Sunday 11am to 7pm
In Craft*folk red/white canvas stalls



EweMoo Foot Rests

www.ewemoo.co.uk

ewemoocrafts@gmail.com

Tel: 07778 102238



Art workshop at Shropshire Vineyard

Kerry Vale Vineyard on the Shropshire/Powys border is pleased to announce a special mixed media art workshop by Shropshire artist Rob Leckey on Friday 15 June.

The event will be part of the Vineyards Shropshire Artists' exhibition, which will feature a selection of Rob's original mixed media paintings and will run at the Vineyard April 16 December. Rob will host the five-hour workshop between 10.30am and 3.30pm with the theme of 'painting without brushes'. The demonstration will cost £50 per person and includes lunch with a glass of Kerry Vale's award winning wine.

Shropshire Artist Rob Leckey is an elected Associate of the Royal Birmingham Society of Artists (ARBSA). He is a retired primary school head teacher who has painted all his life. Rob works primarily in acrylic paint and ink, collage and mixed media and during the workshop he will share his expertise and unusual techniques of applying acrylics with rollers, pieces of shaped wood, card and any found materials. He will also demonstrate to participants how to create collage materials out of torn or shaped tissue paper, newsprint, and magazine illustrations and how to add details with oil and chalk pastels.

Like many artists, Rob's inspiration comes from the subject matter. He finds experimenting with colour, media and techniques is very rewarding. He says "Realism is way down the list of my intentions. By the very nature of how I apply the collage, paint and inks I can never predict the outcome. Along the way many accidents happen, interesting colours and unique shapes emerge"

Rob Leckey paints a variety of subjects; from boats and harbours, towns and cityscapes to landscape (mainly Shropshire).

This workshop is open to anyone interested in art, and Rob's work. No artistic skills or knowledge are required to attend. Places are limited so booking is essential.

Rob's exhibition will launch with a preview evening from 6.30 – 8.30pm on Friday 4 September. Anyone interested in viewing Rob's work is welcome to come along to meet the artist and enjoy a complimentary glass of wine while viewing the show. Alternatively, if you can't make the preview the exhibition can be viewed in the gallery above the vineyard's shop and café during opening hours: Wednesday – Sunday, 10am - 4pm.





The Joy of Birds by Karin Mear

CRICKHOWELL OPEN ART HIGHLIGHTS...

One of the highlights of the Crickhowell Open Studios Weekend is the annual Open Art exhibition which enables the gallery to showcase an unusual selection of work by both professional and amateur artists. The busy Bank Holiday Weekend sees hundreds of visitors enjoying the rich variety of this colourful exhibition.

Suzette Pratten said, "The competition is now in its fourth year and continues to attract work of wonderful quality which is greatly enjoyed by our many visitors. We are very grateful for the continued support of artists who enter, enabling us to add such an exciting mix of work to the exhibition, but also for the generous donations from supporters of the gallery who donate the prize money. The judging panel who generously gave their time to undertake the unenviable task of appointing a winner, this year consisted of Robert Macdonald, Morgan Llewellyn and Liz Buckler".

She added, "Callie-Anne Healey, a watercolour portrait artist, was awarded the first prize for her portrait of Sir Michael Gambon. She is interested in the interplay of colours to create the skin tone of characterful faces and both her entries in the competition are remarkably successful at this. Callie-Anne also has a selection of portraits in the CRiC Studio exhibition. Entitled 'Visitors' Choice' the exhibition showcases work which has been popular with visitors during previous Open Art exhibitions and will continue until 23rd June".

"Natalie Chapman who was awarded the Runner Up prize paints portraits that engage with family identity and issues based around dysfunctional relationships and social documentary. 'Parrot for Father' intrigues with the use of saturated colour and its interesting composition".

"The mixed media painting of a new-born lamb on their family farm earned student Ani Phillips the Young Artist Award". The exhibition in the oriel CRiC gallery continues until the 7th July.



Above: Callie-Anne Healey , Below: Ani Phillips



Below: Natalie Chapman



oriel
CRiC
gallery

Crickhowell
Open Art Exhibition
25 May - 7 July 2018



visitcrickhowell.co.uk

Art in Penallt Exhibition

Art in Penallt is a not for profit organisation and was formed nine years ago when a small group of local artists and residents in the village of Penallt came together to organise an exhibition of high quality, contemporary art. The event is now recognised by artists, makers and visitors from far afield and this, our 8th year, promises to be even better than before as we continue to attract top artists and makers like the potter Walter Keeler (our Patron) and the portrait artist Richard Wills, not only to show but to demonstrate as well. Over 130 leading local and international artists and makers have showcased their work with us and sales are consistently high.

The event is centred on Capel Pentwyn, (NP25 4SE) an imaginatively converted Arts and Crafts period church, a small but light building with excellent wall space. The church is transformed each year from a luxury holiday home into an art gallery. Alongside Capel Pentwyn, in the middle of the village, is Babington Meadow, a novel ecological village recreation area. This becomes a further display area and also demonstrations by artists and makers, all set under large marquees. The two adjacent sites complement each other, the chapel being a calm, quiet space full of interesting, original artwork whilst the Meadow is an animated centre of creative activity.

The show will open in Capel Pentwyn on the evening of Thursday August 30th with a free drinks reception where the public can meet the artists. All are welcome. The main exhibition in Capel Pentwyn runs from Friday 31st August to Sunday 2nd September and is open from 10 to 4. Demonstrations and further exhibits will be on show in

Babington Meadow on both the Saturday and the Sunday. There will also be an art course in Pelham Hall over the weekend.

We have facilities to take payments by debit and credit cards, cheques or cash and all purchases may be taken away when paid for.

The highly regarded Inn at Penallt is just around the corner and has a rolling display of artists' work from the exhibition throughout the year. For those making a day of it, the Michelin starred The Whitebrook valley. The Boat Inn, also five minutes' drive, is a famous real ale pub on the banks of the Wye and provides excellent bar meals.

The organisers are all local volunteers and work in partnership with Babington Meadow, a registered charity, and have also developed a close association with Made in Monmouthshire and local schools. The purpose is to stimulate interest and enthusiasm amongst all age groups in the artistic process of creating a broad range of art and craft forms and to sell a wide variety of high quality artwork.

Each year, numbers attending grow and the organising team make great efforts to ensure there is adequate parking management and also that all parts of the site are accessible by those with mobility problems.

For all enquiries please email:
info@artinpenallt.org.uk



A Wales Millennium Centre and Wiltshire Creative Production

THE MIRROR CRACK'D

by Agatha Christie

adapted for the stage

by Rachel Wagstaff

Direction by Melly Still

Set Design by Richard Kent

Costume Design by Dinah Collin

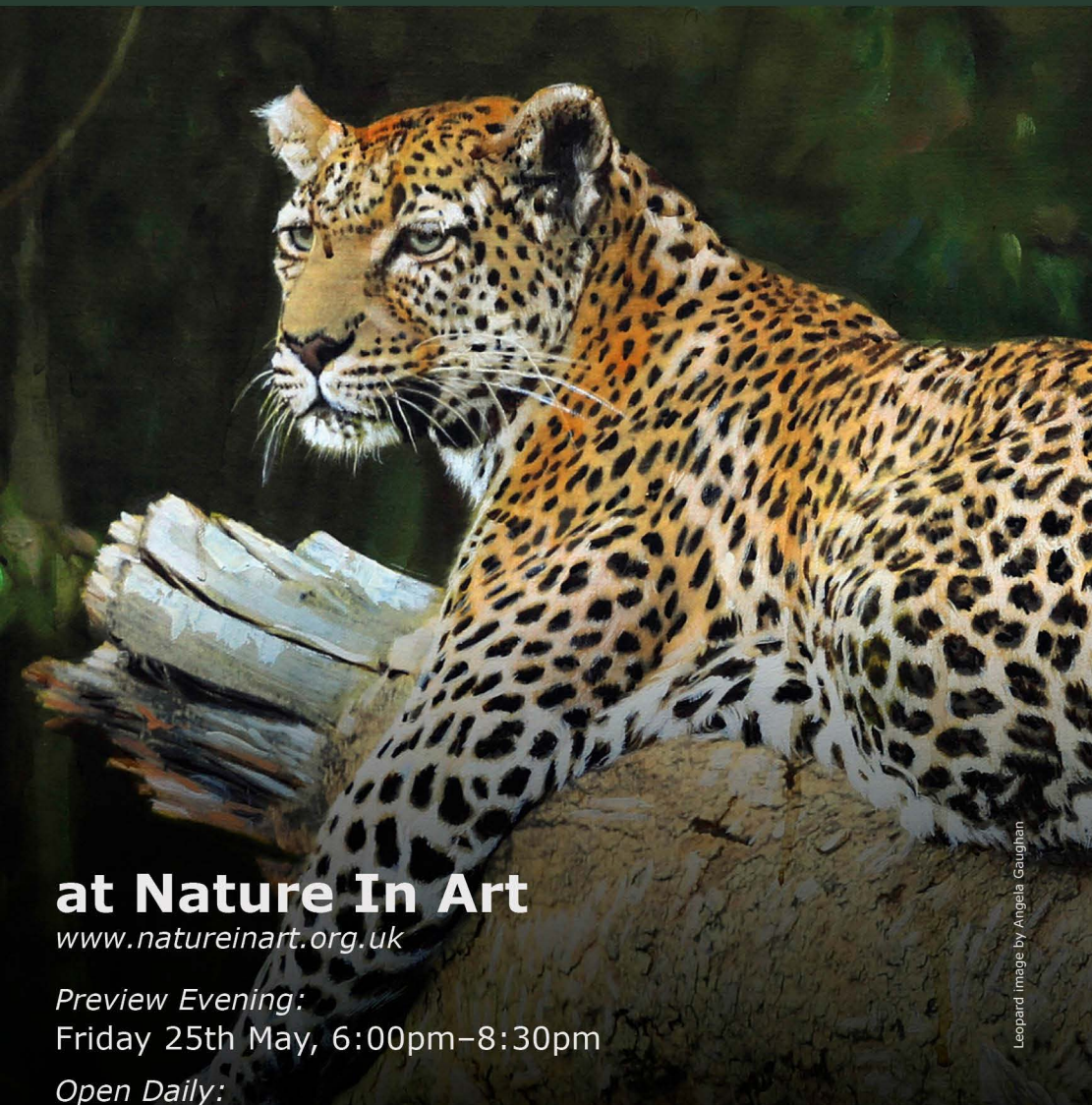
Lighting Design by Malcolm Rippeth

Music & Sound Design by Jon Nicholls

- AGATHA CHRISTIE'S THE MIRROR CRACK'D TO BE ADAPTED FOR THE STAGE FOR THE FIRST TIME EVER IN THE UK
- THE WALES MILLENNIUM CENTRE AND WILTSHIRE CREATIVE EUROPEAN PREMIERE PRODUCTION WILL TOUR FROM FEBRUARY 2019

Wales Millennium Centre and Wiltshire Creative are thrilled to announce the first ever UK stage adaptation of Agatha Christie's much-loved Miss Marple thriller The Mirror Crack'd from Side to Side. The Mirror Crack'd will be a European Premiere, opening at Salisbury Playhouse on 15 February before touring to Dublin, Cambridge and Cardiff. The Mirror Crack'd will have an Opening Night on 25 February. The iconic Marple mystery from the world's best-selling author of all time will be adapted for the stage by Rachel Wagstaff (Flowers for Mrs Harris, Birdsong) and directed by Melly Still (Coram Boy, My Brilliant Friend). Casting is still to be announced. Times are changing. Girls are wearing trousers and Hollywood has come to a sleepy English village in the shape of a beautiful film star. Miss Marple is left to feel that the world has no need of her now until a mysterious death calls into question the past of all those present. Everyone's version of events is different. Can Miss Marple unravel the tangle of lies?

The Wildlife Art Society International **ANNUAL EXHIBITION**



at Nature In Art

www.natureinart.org.uk

Preview Evening:

Friday 25th May, 6:00pm–8:30pm

Open Daily:

Sat 26th May–Sun 3rd June,
10:00am–5:00pm

FREE ADMISSION

www.twasi.com



Tracey-Anne Sitch enters prestigious Wildlife Exhibition...



Tracey-Anne Sitch is a watercolour artist with a lifelong passion for natural history who paints mostly British flora and fauna.

She paints in various styles which may be straightforward portraits against a white background, or highly patterned and decorated frame-breaking paintings. Tracey-Anne has published four illustrated books and sells a range of limited edition prints, cards, mugs and small gift items all illustrated with wildlife and wildflowers.

In a busy year Tracey-Anne will be exhibiting in her usual local galleries as well as in specialist wildlife exhibitions nationally, and the first of these will be with The Wildlife Society International (www.twasi.com/) in the delightful setting of the museum of Nature In Art in Gloucester.

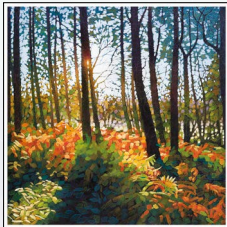
Pictured is 'Winter Fare', one of her entries to this prestigious exhibition.

Facebook: @ Tracey-Anne Sitch Artist

www.traceyannesitch.co.uk

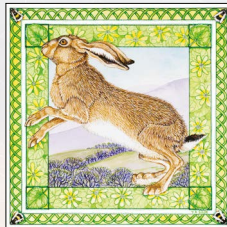
Ipixel Art

"I'm proud to let my customers do the talking"



Paul Burgess

"Hats off yet again to Craig at IPixel Art, I had to get some prints done but Craig was so busy he couldn't see me until 5pm, which was obviously when he should have been going home. He spent over one and a half hours going through everything with a fine tooth comb and wouldn't stop until it was all perfect. It's a real pleasure to work with someone who is so conscientious about what they do and reassuring that my work is in such professional hands."



Tracey-Anne Stitch

"I've been going to I-Pixel since 2007 and will continue to take my watercolours for capture because Craig always delivers - fast, efficient, friendly service and beautiful prints, which I'm hard pressed to tell apart from my originals"



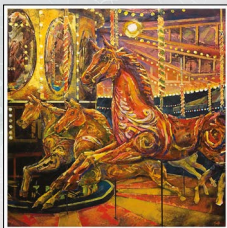
Lee Wright

"Since using IPixel Art to produce fine art reproductions of my work I have been able to reach a wider audience, thus dramatically increasing my profile and the revenues of my art business. I have been incredibly impressed at the skill and determination of Craig in ensuring that the reproductions of my art always look as good, and often better, than the originals!"



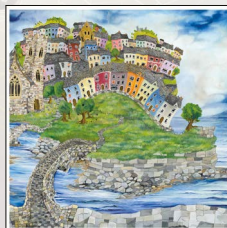
David Day

"I have used IPixel Art for many years. Craig has always been extremely helpful and has never let me down on urgent jobs. Craig is prepared to work closely with the artist, and the quality of the prints are incredible. My customers have regularly commented to me on how amazed they are with the printed versions of my work."



Goff Danter

"IPixel Art has made a major contribution to the development of my reputation as a professional artist. Craig's commitment to providing the best possible service by understanding the needs of his customers has enabled me to reach a much larger audience, sooner than expected."



Jeremy Thomas

"Craig has been reproducing my work for many years and has helped me enormously, he has an attention to detail that is second to none, working tirelessly to ensure that the subtleties in colour are captured perfectly and the printed image is beautifully crisp and clear. Craig is always prompt and professional, but above all else, a thoroughly nice guy. I'm always impressed by IPixel Art... thanks for all the hard work."

For over 12 years I-Pixel has been fortunate enough to have worked with a diverse range of both established and fledgling artists. Above you can see some of the testimonials given by just a small selection of them. I-Pixel Art specialise in the capture and reproduction of fine art, producing limited or open edition prints.

All meetings are by appointment only so please contact me using the details below.

38 Greenways, Hill Top, Ebbw Vale, NP23 6QN

craig@ipixel-design.co.uk 07852248073