



COVER ART: 'Barn Owl, Winter Branches' By Martin Truefitt-Baker



Apple Store Gallery	Oriel Cric Gallery
Made in the Marches Gallery	Goff Danter Art
Oriel Bleddfa	Ewemoo
Giles Gallery	Blue Magpie Craft Fair



CHRISTMAS 2020

Editorial/Adverts

Oriel Cric Gallery
Goff Danter Art
Blue Magpie Craft Fair
Apple Store Gallery
Made in the Marches Gallery
Oriel Bleddfa
Giles Gallery
Ewemoo

Telephone: 07530875629
Email: ingrid@artsharelove.com
www.artsharelove.com

Made in the Marches

12 Church St, Kington, HR5 3AZ



Helen Smith



Richard Hastings

Box of Delights

A treasure trove of art, unique gifts and decorations
from local artists and makers

Adam Watson



Gill Davies & Dee Mills



Jenny Shutler



Mary Stephens

Subject to guidelines:

'Box of Delights' runs throughout December: Tues to Sat, 11am-5pm
New Opening Hours during Jan, Feb & March: Fri & Sat, 11am-4pm

View and Shop online at MadeintheMarches.com

Ewemoo Foot Stools

www.ewemoo.co.uk



Tel- 07778102238

Currently taking orders for Christmas

Visit us at Brecon Craft Market every 3rd Sat of the month

Cardiff Christmas market from Nov 12th

Paul's Metal Crafting

& Linda Thomas Photography

Paul's Metal Crafting Gallery is currently open at Brynithel, Kingstone, HR2 9HJ, opposite the High School carpark. As well as Paul's incredible sculptures, there is also a range of Linda Thomas' nature photographs, cards, calendars & coasters on sale.



Facebook: Paul's Metal crafting

www.paulsmetalcrafting.com



The Red Dress is a decade long travelling embroidery project (2009-2019) by British artist Kirstie Macleod. Started with seed investment from the British Council Dubai in 2009, the dress began its journey at Art Dubai. Since that first exhibition it has travelled around the world being continuously embroidered and added to by 120 different participants to date.



The Bleddfa Centre is run by a charitable trust, in the rolling Radnorshire Hills. In April this year, the Centre appointed a new Director, Emma Bevan, who took the closure during the lockdown as an opportunity to work on a new website and recruit new volunteers, so that upon reopening, the Centre would have a new support network.

The new website also hosts virtual tours of the facilities, including the exhibitions, so if you are unable to visit, you can view, and purchase artwork, or book a stay in the old schoolmistress cottage adjacent to the Centre.

You will also find the cosy Caffi Celf for you to relax in, or enjoy the extended seating area in the garden under a smart marquee, a safe and welcoming place to enjoy the scrumptious menu. Choose from the warming soups, or their infamous Welsh Rarebit, the daily specials, and a range of very tempting cakes; all dishes are handmade.

In December, the Centre is very fortunate to host two fantastic exhibitions.

THE RED DRESS EMBROIDERY PROJECT

Kirstie McLeod will be exhibiting The Red Dress in Hall Barn, and will be joined by the Welsh participant, textile artist Amanda Wright, with her equally stunning embroidered pictures. The exhibition will run from Thursday 3rd December until Sunday 13th December, and will be a rare opportunity to visit the project in Wales, before it tours across the UK next year.

Artisans who have worked on the dress include refugees in Palestine, victims of civil war in Kosovo, Rwanda and DR Congo, individuals from South Africa, Kenya, Japan, Paris, Sweden and Peru, embroidery studios in Bombay and Saudi Arabia, artists in Wales and Colombia and initiatives to support women in poverty such as Missibaba in Cape Town, South Africa, and Fanasina, working with Bedouin embroiderers based in the mountains above St Catherine's in Egypt's Sinai.

<https://reddressembroidery.com/>
<http://www.amandawrighttextiles.co.uk/>



DECEMBER IN ORIEL BLEDDFA

This Red Dress exhibition will run alongside the other amazing exhibition, held in Oriel Bleddfa; 'Peripheries', with potter Malcolm Turner, and abstract painters Emily Gaunt and Ciara Lewis (December 3rd - December 20th), so visitors in December will have a double treat!

A special Meet the Artists for both shows will take place on Sunday 6th December, 2-4pm. "Three contemporary artists exploring through a wide variety of materials and techniques the complexities of movement through diverse methods of mark making. All three largely self-taught makers work in rural isolation and their continuing artistic output reflects their ongoing drive to continue creating amidst the changing turbulence that has marked 2020."

As a fundraiser, the Centre has collaborated with Adele Nozedar and Gower Gin Company... The Bleddfa Spirit, a hand-foraged, botanical gin is winging its way to the Centre, providing a prefect present, but also helping raise much-needed funds. If you would like to pre-order your limited edition, for yourself, or as a gift, please email hello@bleddfacentre.org (available from 5th December).



Emma would like to give special thanks to Adele Nozedar for her invaluable help with choosing the botanicals, and foraging for them too! Adele is a renowned author and foraging 'guru' - you can find out more about her work and courses here:

<https://breconbeaconsforaging.com/>

CHRISTMAS SHOPPING AT BLEDDFA

As the Centre cannot hold their Christmas fayre this year due to CV-19 restrictions, they would like to invite you their Weekly Festive Fayre instead!

Every week throughout November and December, Thursday - Sunday, between 11am until 4pm, their very wonderful volunteers will be on hand to help you choose and purchase unique, affordable, handcrafted presents. The wonderful Gift Shop at Bleddfa is stocked by many local artists, where you will find cards, jewellery, pottery, books, wreaths, aprons, oven scarves, candles, prints and paintings, throughout the year. You can then enjoy a well-earned warm drink and delicious cake in the café.



On the website you can also find out about workshops, events, yoga classes, meditation sessions and much more. Or find out how to hire the Hall Barn for events or weddings. www.bleddfacentre.org

You can also find Bleddfa on Facebook, Twitter and Instagram.

If you would like to receive the newsletter, pop an email to Emma at hello@bleddfacentre.org, or find out about becoming a Friend of Bleddfa.

Christmas at Giles Gallery

Giles Gallery's November to December exhibition is hung and ready for the festive season!

We are excited to be including paintings by locals, Sue McDonagh and Sylvia Hughes-Williams, as well as myself, Beth Giles.



Painting by Beth Giles

Bring colour to your life! Join us (in a socially distanced way).



Seascape by Sue McDonagh

Our 'Postcards from Lockdown' exhibition has come to an end now. If artists wish to collect any of their work that has not sold feel free to contact us to arrange a time or pop in to see us during open hours. And thank you so much for showing the life that still shone in all of us during this dark time, it was well received by all our visitors.



December Exhibition



***New Opening Hours:**
Tues to Friday 10am - 5pm
Saturday 10am - 4pm

Old Methodist Chapel, Cowbridge Rd, Pontyclun, CF72 9EG

www.gilesgallery.com

Tel: 01443 228638 Email: beth@gilesgallery.com

Crickhowell at Christmas



The oriel CRiC gallery in Crickhowell always celebrates beautiful handcrafted items and this festive season is no exception. With an abundance of decorations, ceramics, textiles, gifts, books and cards, the gallery and the centre's downstairs retail area offer great choice for those who would like to collect a beautiful item for the home or give an unusual gift while at the same time supporting artists and designers. Now more than ever every purchase, however small, is vital to the prosperity and survival of galleries and independent shops.

With a growing presence online both the gallery and the retail area offers the opportunity to browse and shop from the comfort of your home as this has become a necessity for many. Do explore www.cric.wales and www.orielcric.wales

In keeping with Crickhowell tradition, the Centre will be open for late night shopping on Thursday the 3rd of December. Christmas is the perfect time to visit and enjoy the charm of Crickhowell which always offers a warm welcome. The Christmas exhibition will continue until 9 January 2021.

Crickhowell Resource &
Information Centre, Beaufort Street,
Crickhowell, NP8 1BN
gallery@visitcrickhowell.wales

Christmas Exhibition



Robin by Adele Pask

oriel
CRiC
gallery

www.orielcric.wales

Goff Danter

A highly acclaimed professional artist, working from his studio in South Wales.



He is now established as being amongst the most sought after and collectable painters in the contemporary art market. His perfectionist attitude, individual style and the quality of his work has led to demand exceeding availability. To ensure access to his paintings even galleries need to book well in advance.

Nostalgic

Goff is represented in international, corporate and private collections where his originals are regarded as sound investment opportunities for the future. His original paintings have dramatically increased in value over the years.



Industrial

His expressive paintings reflect the mood or atmosphere of events and locations, rather than purely pictorial representation. He specialises in Nostalgic Welsh Art, Fairground Art, Industrial Art and The Racing Game, demonstrating his love of horseracing. They are about his thoughts and memories, illustrated with references to the places he knows so well.



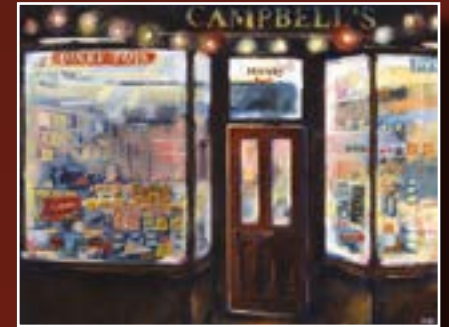
Fairground



Racing



Topping up 'Fifi'



Miss Campbells Toy Shop

Roll Up

Available for sale in the gallery are Limited Edition Prints along with a range of gift items and gift vouchers. Also available at Martins Gallery, Baker St, Abergavenny.

Merry Christmas and Happy Year

07872857741

Visits can be arranged by e mail

dantergoft@gmail.com

50a Beaufort St, Brynmawr, NP23 4AG

Every picture tells a story

www.goffdanter.co.uk

Cardiff Christmas Market

AN **ALTERNATIVE**
OUTDOOR
SHOPPING
EXPERIENCE

craftfolk.com
cardiffchristmasmarket.com

- Organised by Craft*folk
- Meet the makers
- 70 wooden stalls
- Buy local, buy handmade

Rolling programme of over 150 exhibitors

Thurs 12 Nov 2020 to Wed
23 Dec 2020

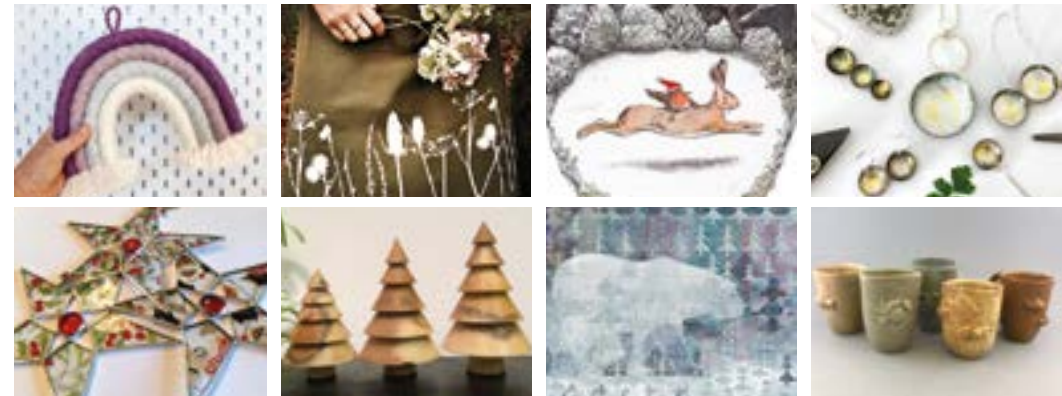
T: 02920 514732 M: 07974561514

CONTEMPORARY CRAFT FAIR

RESTRICTIONS DEPENDING, RE-SCHEDULED TO

Friday December 11th – Sunday December 13th 2020

10.30am - 4.30pm £3 Admission (Children Free)



@bluemagpiecraft



Approx 30 makers will be exhibiting in person over 3 days
with a festive Cake-Away open all weekend!

www.bluemagpie.co.uk

Elmslie House, 8 Avenue Road, Malvern WR14 3AG



Apple Store Gallery 2020

Unit 1, Rockfield Road
Hereford, HR1 2UA

telephone • 01432 263 937

email • applestoregallery@btinternet.com

web • <https://www.applestoregallery.com>

f b • @AppleStoreGall

t w • @AppleStoreGall

ig • applestoregall



Christmas Delights

Special gifts at special prices for
that special time.

18th Nov to 19th Dec

Rockfield Arts

Studio artists from ASG and
Artsite 3

20th Jan to 27th Feb

Exhibitions online & open for
visiting subject to restrictions

See website for details