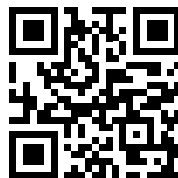


# ART SHARE LOVE

Wales & Borders



JUNE 2021

ISSUE 87

Cover art: 'Blue Boat' by Jill Jones.  
Original available from Pure Art Gallery, Milford Haven



Jill Jones Art	Louise Collis Art
Oriel Cric Gallery	Artist Karin Mear
The Bleddfa Centre	Jennifer Alsop Art



## Editorial/Contributors

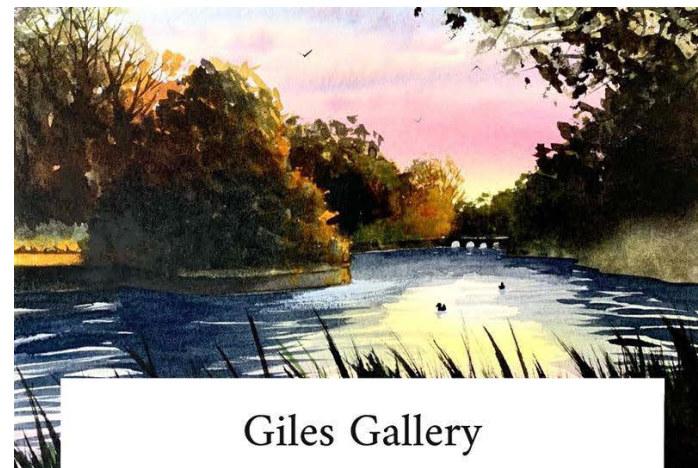
Jill Jones Fine Art (cover artist)  
 Oriel Cric Gallery  
 The Bleddfa Centre  
 Epic Outdoor Cinema  
 Giles Gallery  
 Louise Collis Art  
 Artist Karin Mear  
 CraftFolk  
 Jennifer Alsop Art  
 The Pen & Paper



*Say hello!*

Email: [ingrid@artsharelove.com](mailto:ingrid@artsharelove.com)  
 Tel: 07530875629  
[www.artsharelove.com](http://www.artsharelove.com)

Disclaimer: Reasonable care has been taken to ensure that the information contained in this guide in print and on the website are as up-to-date and accurate as possible, as of the time of publication, but no responsibility can be taken by ART SHARE LOVE Magazine for any errors or omissions contained herein. Furthermore, responsibility for any losses, damages or distress resulting from adherence to any information made available through this guide/website is not the responsibility of ART SHARE LOVE Magazine. Readers are advised to check with listings/article information with event providers to avoid disappointment. No responsibility will be accepted for any errors or omissions.



## Giles Gallery

Giles Gallery's raffle prize offering to  
 SHOP LOCAL PONTYCLUN to raise money  
 for the amazing local cause  
 2 WISH UPON A STAR

A mounted giclee print by Beth Giles of  
 Talygarn Lake. Art supplies including  
 sketchbook, canvas panels, set of acrylics, set of  
 brushes, pencil, graphic pen, eraser & sharpener



Over 40 different amazing prizes to be won, donated by amazing local businesses.

All money raised going to 2 Wish Upon A Star.  
 Follow this link to get your tickets to have a chance to win BIG!!

<https://justgiving.com/fundraising/2-wish-slp>



Welcome to June at The Bleddfa Centre! In addition to our exhibitions in Oriel Bleddfa and occasionally Hall Barn, we also have a well-stocked Craft shop with beautiful gifts and cards from local makers, and our cosy tearoom, Caffi Celf, where you can choose to sit indoors, or in the gorgeous garden, where you can enjoy scrumptious teas and cakes.

Supporting us through the shop, gallery and café will ensure we can stay open 4 days a week, which in turn means the local artists with work in the gallery and Craft Shop continue to be able to sell their arts and crafts, which is crucial during these turbulent times.

### Our forthcoming events:

\* Our monthly 'Conversations With' series continues on Thursday June 17th at 6pm, with Francesca Kay chatting to our conversations guru, Leigh Hendra of The Hours Bookshop in Brecon (you can book your place by emailing us), about Words and Weeds.



Artist, Francesca Kay

\* May 27th - June 13th, Sorrel Matai will be exhibiting her work following her degree course at HCA

\* June 19th & 20th will see The Big Skill running free crafting workshops in the orchard, and their lockdown exhibition on display in the Barn. To book their workshops please go to [www.thebigskill.com](http://www.thebigskill.com)

You can also keep up to date with monthly exhibitions and events, via the website: [www.bleddfacentre.org](http://www.bleddfacentre.org) or by signing up to the newsletter.

Have you joined our Friends Of Bleddfa scheme yet? It is only £50 a year, and everyone who subscribes will receive a welcome gift, and other exciting benefits – please do email us to find out more. Any help is vital this year, as we find our feet following the effects of the pandemic.

As a charitable Trust, we also rely on donations of all sizes, which are always gratefully received ([www.bleddfacentre.org/donate](http://www.bleddfacentre.org/donate)) – or you can offer a donation of time, and volunteer with us – details can be sent to you by emailing [hello@bleddfacentre.org](mailto:hello@bleddfacentre.org)

The current exhibition, running throughout June, and which you can also view online via our website if you are too far away to visit in person, is that of The Picture Makers "Y Llundwr" (Moving towards a New Normal).

### Opportunity:

We are currently seeking someone who wishes to run our part-time café 4 days a week, as their own business (the previous café folk have moved away), with a rent-free period to begin, and no initial outlay. The café is an integral part of the Arts Centre, so we are hoping someone who may have an established food business may like to help, or this could be a new venture for someone.

We look forward to welcoming you!

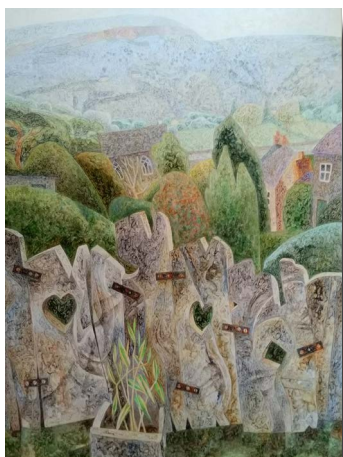
With all our best wishes,  
The Bleddfa Team  
The Bleddfa Centre - 'For the creative spirit'



[hello@bleddfacentre.org](mailto:hello@bleddfacentre.org)  
[www.bleddfacentre.org](http://www.bleddfacentre.org)



**The Old Floorboard Fence**, Tim Rossiter's latest painting in the exhibition in the oriel CRiC gallery Crickhowell does make one reflect on the inspiration behind paintings and other works of art. Salvaging old floorboards discarded while a neighbouring house was being renovated, he used them to make a section of the garden fence, having first cut in some hearts and diamonds and other shapes to make them look a bit less utilitarian. Sitting in the garden recently, he could see them in a painting of which Tim says, "What I love is that this painting is the fourth incarnation of these boards; First a tree, then floorboards, (sometime in the nineteenth century), then a fence, and now a painting, which should end up hanging on someone's wall long after the boards themselves have decayed away".



*The Old Floorboard Fence, By Tim Rossiter*

The rural setting in the heart of the Brecon Beacons National Park is at the core of much of the printmaking, paintings, textiles, jewellery, ceramics and sculpture exhibited in the gallery capturing colour, texture and shape and a true sense of place. Visitors are enjoying and finding inspiration in the tranquillity that this exhibition offers.

After being the overall winner in the Crickhowell Open Art Competition in 2019 the gallery team has been delighted to welcome Alison Edgson back showing seven paintings in the current exhibition. Following a successful career illustrating picture books Alison wanted a new challenge and to

escape from the tight deadlines and constraints of illustration, so she began to paint, inspired by the landscapes around her home and in particular the beautiful expanse of the Usk Valley as seen from the Trellech Plateau.



*Approaching Shower, Cats Back from The Darrens & A Flash of Sunshine, By Alison Edgson*

The inspiration of the landscape can also be seen in the wonderful new collection of paintings by Nick Pritchard. Nick says of his work, "Fortunate to live in an area with such diverse and beautiful landscape, I feel compelled to capture not only the essence of a particular time and place, but also the emotions and feelings it evokes. I am interested in how the creation of textures, and the application and manipulation of the paint builds into representation".



*Strange light under darkening skies, Pwll Du, By Nick Pritchard*

The gallery is currently welcoming visitors Monday to Saturday 10am to 4pm  
Oriel CRiC gallery, Beaufort Street, Crickhowell,  
NP8 1BN Tel 01873 813665



Painting by Nick Pritchard

oriel  
CRiC  
gallery

[www.orielcric.wales](http://www.orielcric.wales)



# Jill Jones Fine Art

ORIGINALS AND PRINTS FROM WEST WALES

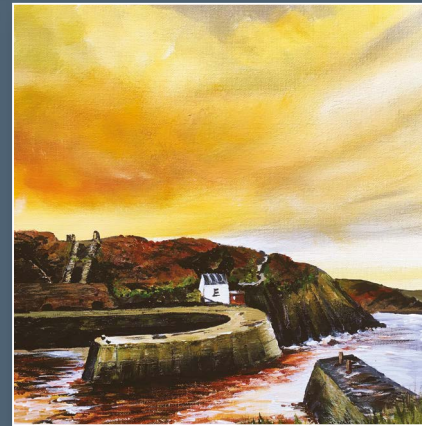
[www.jilljones.co.uk](http://www.jilljones.co.uk)



*"Dreamy Days;" That lovely sunny summer where time is forever  
and you can spend many happy hours by the water...*

Original available from Life: Full Colour Gallery, Caernarfon.  
Limited Edition Giclée prints via my website

- Coastal landscapes.
- Soul-inspired seascapes.
- Commissions.



*"Golden Sunset"*  
Available from: myself at West Coast Studio



West Coast Studio.



*"Seaside Pembrokeshire Cottage"*  
Available from: [www.oriellanteglos.co.uk](http://www.oriellanteglos.co.uk)



*"Summer Abstract"*  
Available from: [www.eastgatecreativehwb.co.uk](http://www.eastgatecreativehwb.co.uk)

Please see my website  
[www.jilljones.co.uk](http://www.jilljones.co.uk) for all available  
originals and Giclée prints. Here  
you will also find details of whether  
an original is available through a  
gallery only, or from my studio.

West Coast Studio, Talbenny,  
Haverfordwest, Pembs SA62 3XB  
e: [art@jilljones.co.uk](mailto:art@jilljones.co.uk) t: 01437 781386

 [facebook.com/jilljonesart](https://facebook.com/jilljonesart)  [jilljones\\_art](https://www.instagram.com/jilljones_art)  [@jill\\_artist](https://twitter.com/@jill_artist)





# Louise Collis

## Landscape Artist

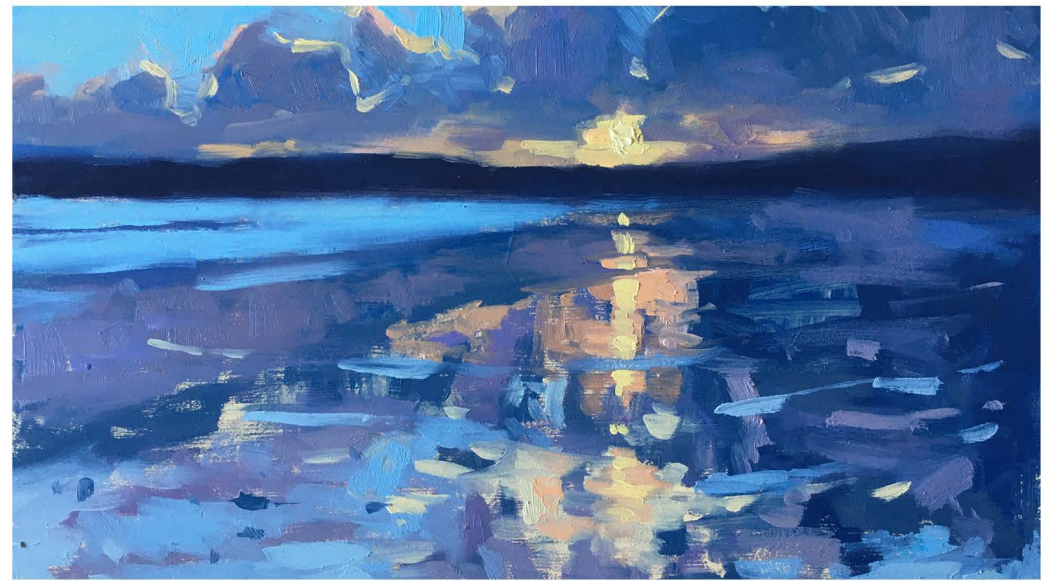
### Daily Paintings Project

Louise Collis is a landscape painter based in Abergavenny who usually paints 'en plein air' in oils. Watching the view change in front of her, she chases the light and tries to get as much of the atmosphere of the location into her paintings as possible.

March 2020 meant a quick rethink about how to carry on working during the pandemic without the usual calendar of painting trips, exhibitions and fairs.

"I decided to do a small painting every day while working from home instead of the studio or outdoors. I had a wealth of inspiration from years of travelling the country while landscape painting and lots of ideas.

I started off trying to stick to the painting calendar I had planned, so when I was due to be painting in Pembrokeshire I 'travelled' there at my kitchen table with my paints instead. I posted each painting on social media on the same day. They were often snapped up which was wonderful and people would also suggest locations that they would like me to paint.



I carried on doing my daily paintings for over a year and as well as creating a large collection of paintings to exhibit, this unplanned project gave me a focus and routine that I found incredibly helpful during these unusual times.

I'm now tentatively starting to resume my usual way of working, so I'm doing a lot more plein air painting and my studio is now open for appointments"

Louise's daily paintings are now on her website along with cards and prints and you can also get in touch to arrange a time to visit her studio.



To browse available paintings, see latest exhibitions and arrange a studio visit, please visit

[www.louisecollis.com](http://www.louisecollis.com)

email. [louisecollis@gmail.com](mailto:louisecollis@gmail.com)

Tel. 07949 187426

Studio. Louise Collis Studio & Gallery, 20 Monk Street, Abergavenny, NP7 5NP





Prepare for an epic summer for on the 31st July, Epic Outdoor Cinema are bringing 3 feel-good films to the Roman village of Caerleon.

Kicking off with The Greatest Showman, this family-friendly film is sure to lift your spirits and bring smiles all around. With some street food on offer too, an on-site bar and even a dedicated Prosecco van, there's a lot to enjoy.

With enormous thanks to our sponsor, Rougemont School, The Village Bakery, AJ Garage Services, Hot Tubs Rock, MouseTech and Ffwrwm Arts, this amazing trio of films are all showcased in the great outdoors, social distancing will be adhered to and hand sanitiser stations will be available throughout. Staff will be wearing PPE too, making this incredible event, a safe and responsible way to have fun.

Our afternoon treat comes in the form of one of the most popular music biopics ever, Bohemian Rhapsody. This incredible film

depicts the life of Queen legend, Freddy Mercury. This film is guaranteed to rock you!

And if that wasn't enough, we'll be showing you the film none of us 80's kids forgot, Dirty Dancing. Few of us mastered 'the lift' but we all still love to try! Get ready for the time of your life, sing along to all those classic tunes and have a dance, it'll be epic!

With a giant LCD, all-weather screen, cinema sound and plenty of open space to feel safe, this 3-film treat of outdoor cinema is a great way to spend your #staycation summer in Wales.

Adult tickets are £16.50 and children up to 12 are charged at £12.50 per film. To book your tickets visit our website:

[www.epicoutdoorcinema.org](http://www.epicoutdoorcinema.org)

For regular updates follow us on Facebook & Instagram.

@epicoutdoorcinema

Proudly Sponsored By

PRIZES FOR BEST DRESSED!

One Epic Day of...

# FILMS & FOOD

\* Social distancing in place

\* Hand sanitiser stations throughout

\* Toilets on site

\* Bring your own blankets & chairs

**3 OUTDOOR CINEMA 'FEEL-GOOD' FILMS**

**GIANT LCD ALL-WEATHER SCREEN**

BAR

'NHSOB', Newport High School Old Boys Rugby Ground, Caerleon

Access via The Hawthorns

*Outdoor cinema & street food extravaganza!*

## SATURDAY 31ST JULY 2021

### ...IT'LL BE EPIC!

The Greatest Showman - 12pm

Bohemian Rhapsody - 4pm

Dirty Dancing - 8pm

With thanks to our Silver Sponsor

Call: 07530875629

BOOK TICKETS AT:

E: [info@epicoutdoorcinema.org](mailto:info@epicoutdoorcinema.org)

## www.epicoutdoorcinema.org

PRICE PER FILM OR STAY FOR THE DAY!

**TICKETS**  
ADULT - £16.50

**TICKETS**  
CHILD - £12.50

**ALL DAY TICKET**  
£25





## Meet the Makers 2021

(new confirmed event)

Fully Covid compliant for both exhibitors and visitors  
**Cardiff City Centre: Pedestrian areas covering St John's  
 Church area, Working Street and the Hayes**  
**Saturday 26 June to Saturday 10 July 2021**  
**Trading hours: 10am to 5.30pm Monday to Saturday**  
**and 10am to 5pm on Sunday**  
**In Craft\*folk wooden stalls**

As we are unable to run our full calendar of events this year the Council have given us permission to run an extra event in Cardiff City Centre with the emphasis on "Meet the Makers" to give our artists and crafts people the opportunity to demonstrate how they make their beautiful work. In order to do this there is also the possibility of a second stall available free of charge.

If you are interested in applying to take part please email:

[jane@craftfolk.com](mailto:jane@craftfolk.com) for an application form, or if you require further information.

Whilst you can apply for the full 15 days it is also split into two periods of 7 and 8 days respectively.

Taster stalls and part periods are at our discretion.

[www.craftfolk.com](http://www.craftfolk.com)

[www.craftfolk.com](http://www.craftfolk.com)

## Jennifer Alsop Art



Inspired by her Welsh landscapes, seascapes, wildlife and botanicals, the incredible watercolour artist, Jennifer Alsop brings a wonderful sense of joy to all that she paints.

Winning many accolades throughout the years, she has recently won a 'Highly Commended Award' from the International Watercolour Masters for one of her portraits! Jennifer's work can be purchased direct via email or at her Artfinder page.

Email: [jennifer@jennyalsop.co.uk](mailto:jennifer@jennyalsop.co.uk) Artfinder: [jenny-alsop](https://www.artfinder.com/jenny-alsop)  
 Etsy: [AlsopArt](https://www.etsy.com/shop/AlsopArt)

Jennifer's work can also be seen via: [www.painters-online.co.uk](http://www.painters-online.co.uk)





# Chapel Cottage Art Studio

**W**e are thrilled to be kicking off our Summer term of classes and events here at Chapel Cottage Studio from the 12th of April. Our aim is to provide friendly, informal Art classes for all abilities, so whether you are looking to gain new skills and improve your techniques or maybe you would like a new hobby or just some time to yourself, we believe that Art is for EVERYONE and we will have a class to suit you!

Coming up this term:

Loosening the Line with tutor Pete Monaghan

Beginning with representational drawing we will develop a move towards a freer and looser line through drawing exercises and identifying line qualities. We will look at techniques that help us transfer our line drawings into paintings whilst retaining the energy of a sketch. With a strong focus on composition we will talk about viewpoint, size, shape, form and pattern. Suitable for all abilities.

Watercolours 1 and 2 with Peter Cronin

Aimed at beginners and improvers respectively, these monthly 3 hour classes are aimed at those who would like to learn to work (or improve their work) with watercolour.

Friday Art Pastels classes with various tutors

A range of half day classes focusing on a different style and method for working with pastels each month. Each class is with a different tutor providing a wide range of topics, styles and techniques. Including Reflections with Jantien Powell, Painting Birds with Alison Board, Still Life with Mark Warner and Painting Glass with Rebecca Way

These are just a small selection of the classes that we have coming up – we have a range of classes and clubs including pastels, oils, watercolours, acrylics, mixed media, pencil drawing, life drawing and portrait drawing!

Visit our website for more information or get in touch if you have any queries - we are very happy to help!

[www.chapelcottagestudio.co.uk](http://www.chapelcottagestudio.co.uk)



Llanddewi Rhydderch, Abergavenny NP7 9TT

[www.chapelcottagestudio.co.uk](http://www.chapelcottagestudio.co.uk)



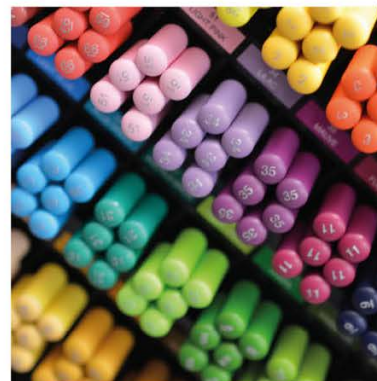
# The Welsh Hat

Greeting Cards & Art by Karin Mear



Available from Etsy @TheWelshHat

The Makers Gallery, Crickhowell  
The Hours Cafe & Bookshop, Brecon  
Wool Stall, Aberdare Market



PENS • GREETINGS CARDS  
ORGANISERS • PLANNERS  
CALENDARS • DIARIES  
NOTEBOOKS • PAINTS • INKS  
PASTELS • CHARCOALS  
PENCILS • PAPER • CARD  
SKETCHBOOKS • ART BOOKS  
EASELS • ART TOOLS • GIFTS

& SO MUCH MORE!

---

SHOP LOCAL  
AT  
THE PEN & PAPER!

---

The  
**PEN &  
PAPER**

[www.penandpaper.co.uk](http://www.penandpaper.co.uk)  
E: [sales@penandpaper.co.uk](mailto:sales@penandpaper.co.uk)  
T: 02920 373738



# Coastal & Maritime MIXED ART SHOW

On Now - 13 June 2021

Fundraising in aid of the RNLI



Visit the website for latest opening  
times, arts catalogue and online shop:

[www.tymeirion.co.uk](http://www.tymeirion.co.uk)

10% OF ART SALES GOING DIRECT TO THE RNLI

**Oriel Tŷ Meirion**  
**Dyffryn Ardudwy, LL44 2DH**