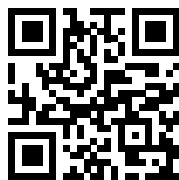


ART SHARE LOVE

Wales & Borders



MARCH 2018
FREE ARTS MAGAZINE
ISSUE 55

COVER ART: BRID LYONS



10 OF THE BEST IRISH ARTISTS
ELMSLIE HOUSE ART
ORIEL CRIC GALLERY
STEVE MANNING
RHIANNON ART

LINO PRINTING
SCULPTURE
CERAMICS
PAINTINGS
MIXED MEDIA

MARCH EDITION!

MARCH 2018



FEATURES:

10 OF THE BEST IRISH ARTISTS

EDITORIAL:

ELMSLIE HOUSE ART
ORIEL CRIC GALLERY SPRING EXHIBITION
ANDREW LAMONT GALLERY
PRINTMAKER, STEVE MANNING
RHIANNON ART

say hello

Advertising & Editorial: Ingrid Nicholas

Email: ingrid@artsharelove.com

Telephone: 07530875629

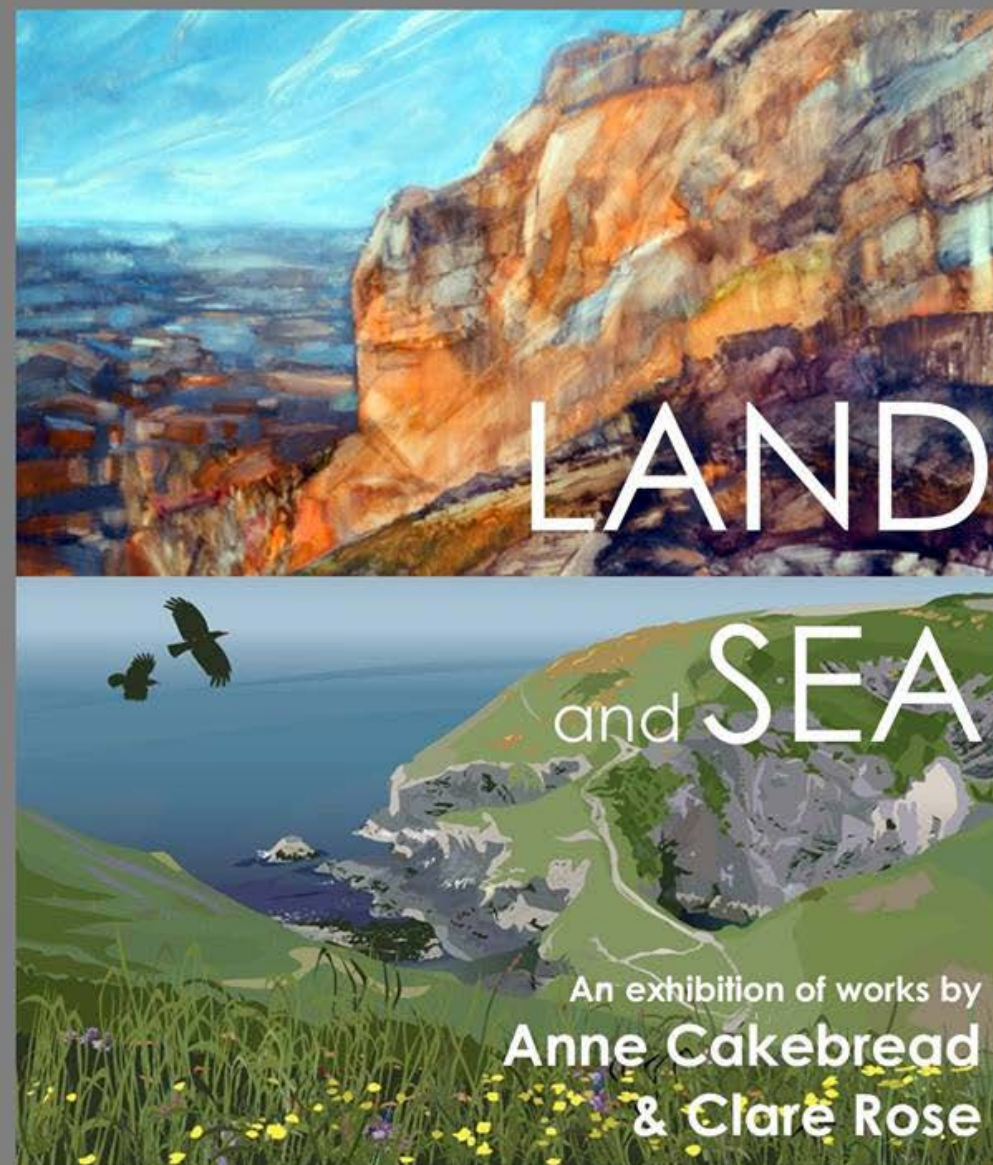
Get social with Facebook: @ARTSHARELOVEWALES

Get social with Twitter: @IngridASLW

www.artsharelove.com

Disclaimer: Reasonable care has been taken to ensure that the information contained in this guide in print and on the website are as up-to-date and accurate as possible, as of the time of publication, but no responsibility can be taken by ART SHARE LOVE Magazine for any errors or omissions contained herein. Furthermore, responsibility for any losses, damages or distress resulting from adherence to any information made available through this guide/website is not the responsibility of ART SHARE LOVE Magazine.

No responsibility will be accepted for any errors or omissions.



Guildhall Cardigan

ONE WEEK ONLY

SA43 1JL

Sunday 18th March - Saturday 24th March

Art at Elmslie: a new venue in a unique setting

2018 sees the launch of a series of Art Exhibitions running throughout the year at Elmslie House in Great Malvern, a restored gothic Grade II family home.

The inaugural exhibition, 'A Fresh Start' is a Spring Show of Contemporary Art, which will bring together the work of seven artists personally selected by the venue owner, Anna Taylor, to offer a wide range of work. They include:

John Button, Artist
Guy Butcher, Bespoke Fine Furniture
Emma Hardicker, Printmaker & Designer
Clarie Malet, Metal Artist
Shivani Patel, Goldsmith
Karen Stone, Artist
Mark Upton, Sculptor



The exhibition will be open daily from 10.30am – 4.30pm on Saturday 7th April through to Sunday 15th April inclusive with late night opening on Friday 13th April until 8.00pm.

The exhibition may be opened at other times by arrangement.



A café will be open throughout the exhibition offering light refreshments.

For more information please contact Anna Taylor on 07789 470780 or elmsliehouse@gmail.com, or for directions, visit: <http://elmsliehouse.co.uk>.

Following this event, local Art Dealer, Dr Richard Turkington returns to Elmslie to bring 'The Art of the Fifties', a major exhibition of original paintings and prints running from Saturday 26th May until Sunday 3rd June.

Elmslie House will also be participating in Worcestershire Open Studios over the late August bank holiday and showing the work of local En Plein Air landscape artist, Antony Bridge who is currently Artist in Residence for the National Trust at Croome Court.

Elmslie House is a private family home which opens up part of the ground floor for music performances, Blue Magpie Contemporary Craft Fairs, weekly exercise classes and has been operating as a venue since 2015. Now also fully licenced, Elmslie runs a full calendar of events. For full listings please check their website – www.elmsliehouse.co.uk or the Facebook Page/Elmslie House.





Rhiannon has recently won 'Young Tourism Person of the Year for South East Wales' and will be celebrating at the Celtic Manor on March 8th.



See Rhiannon at Easter in Landsea Square, Cardiff

30th of March to 2nd of April

With brand new iPhone & Samsung Galaxy cases for sale, as well as brand new Cardiff original paintings!

RHS Flower Show, Cardiff

from the 13th of April to the 15th

With brand new mugs & aprons for sale.



Steve Manning

PRINTMAKER



Steve is a prize-winning printmaker living and working in Exeter. He learnt his printmaking skills at the acclaimed Double Elephant Print Workshop in Exeter and still uses their wonderful Victorian Albion press to produce his relief prints.

The Devon countryside serves as inspiration, particularly the Exe Estuary with its ever-changing moods, dictated by weather, wind and tides. Most of Steve's prints seek to capture a brief moment of stillness amongst the constant movement of the natural world, whether it's a flight of birds over the mudflats or racing clouds on a blustery day.

Steve's prints can be found at the Erwood Station Gallery near Builth Wells and a selection of galleries in Devon and Somerset.

Email: stevesprints@yahoo.co.uk

Facebook: www.facebook.com/stevemanningprints

www.stevemanningprints.co.uk

10 OF THE BEST IRISH ARTISTS... *St. Patrick's Day Celebration!*



Dawn Conn Sculpture
Breathing life & love into sculpture

1. DAWN CONN

Email: hello@dawnconn.com
IRELAND: +353 89 600 4450
UK: +44 7543 055 813

Dawn's figurative sculptures merge curiosity, wonder and memory. Each holds its own narrative and own emotional connection. Drawing on the simplicity, style and stories of our childhood, Dawn draws on her own memories from her childhood in New Zealand and encourages the viewer to recall memories from their own.

Her figurative sculptures are looking at the world through the eyes of a child, 'my figures have developed into tactile memories with distinct themes and unique styles of sculpture; that portray a certain whimsy and unspoken curiosity.'

Dawn relocated to Dublin from Brisbane, Australia in early 2017 and is excited to be part of the "Bloom festival" in Dublin, this year from 31 May to 4 June 2018.

www.dawnconn.com



2. BRID LYONS CERAMICS
CLAY CREATIONS, CERAMIC ART
AND DESIGN STUDIO,
Low Street, Thomastown, Co. Kilkenny,
Tel: 087 2570735
Email: bridlyons@yahoo.ie

Brid specialises in distinctive ceramics and unique sculptural pieces that have gained wide acclaim both nationally and internationally. Her 1920s heads are part of her signature designs. For Ceramic enthusiasts and those who want something truly unique, we also design bespoke commission pieces to order. An Online buying facility is currently unavailable at present but Brid takes orders over the phone or via email through the contact form on her website. For opening times:- Please visit the website.

Bridlyonsceramics.com

3. KATHRYN CALLAGHAN

Email: kathryn@kathryncallaghan.co.uk
Facebook: @kcfineart
www.kathryncallaghan.co.uk

These beautiful limited edition, textured prints by Kathryn Callaghan are the perfect addition to any home. Printed on fine art paper and embellished with a glossy texture, they have the appearance of Kathryn's original, poured paintings.

The 'Textured Print' collection includes a wide range of animals, such as the stag, highland cow, squirrel, fox and a range of birds. They are presented in a double conservation-grade mount and UK delivery is complimentary.

Visit www.kathryncallaghan.co.uk to shop the full range. Follow Kathryn on Facebook at kcfineart.



www.kathryncallaghan.co.uk

4. HELEN GRIFFIN

Tel: (+353) 087 9180318

Email: helengriffinart@gmail.com

Facebook: @Helen Griffin Ceramics

www.helengriffinceramics.com

Using earthenware with sgraffito techniques, my creative process is driven by a desire for inner connection, a deep regard for the natural environment, investigation into myth and folklore, story-telling and playfulness, and a striving for creating beautiful handmade objects and art which form a personal meaning and conversation within daily life.

I balance my time between working as an Art Therapist, and as Studio Artist & Potter at my home in County Galway. I am a member of Made in Galway, the Design & Crafts Council of Ireland (DCCol), and the Irish Association of Creative Arts



www.helengriffinceramics.com



5. DANNY VINCENT SMITH

Phone: +353 (86) 3986895

Email: info@dannyvincentsmith.com

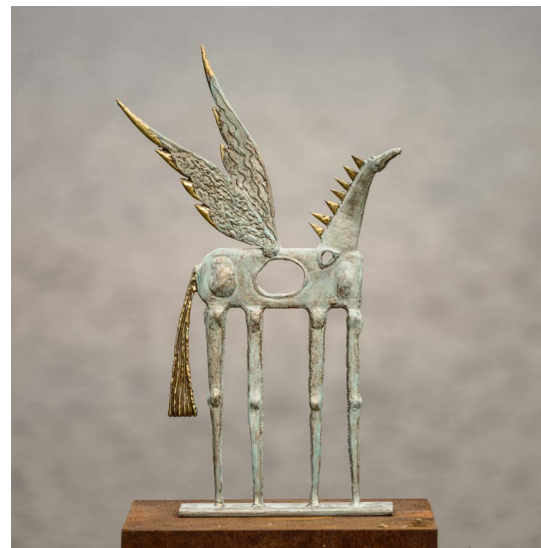
Instagram: @dannyvincentsmith

www.dannyvincentsmith.com

Self-taught mixed media artist Danny Smith, hails from the West Cork town of Bantry. Travelling throughout Ireland (easel in tow) on his motorbike, Danny lives and breathes his surroundings, capturing the true essence of Irish life. It's magnificent landscapes, seascapes, lifescapes, people and animals. Plein air at its best!

Danny's work is available to purchase via his website. Get in touch via email or phone to discuss a commission. He undertakes work in a variety of mediums to suit your creative vision.

www.dannyvincentsmith.com



6. RONAN HALPIN

Keel, Achill Island.

Co Mayo.

Ireland

Tel: +353 (0)87 277 0409

www.ronanharpin.com

With an earthly mystical quality, sculptor Ronan Halpin has been creating masterpieces for over 30 years. Taking inspiration from the wilds of Achill Island, he has exhibited all over Ireland and continues to do so. Solidified in bronze, splashed with silver and sometimes lavished in gold, each of Ronan's sculptures are nothing short of magnificent, created with extraordinary imagination.

Title: Blue Horse

Materials: Painted Steel & Brass

Dims: 66 x 40 x 10cms

www.ronanharpin.com

7. BOB JOHNSTON

Mob: +44 7762591100

Tel: +44 2891 470653

Email: info@bobjohnstonbaskets.co.uk

www.bobjohnstonbaskets.co.uk

Using only the finest locally grown Irish willow, Bob Johnston brings magnificent beasts to life with his unique sculpting techniques. A trained textile weaver, Bob has mastered the art of traditional and contemporary basket making and turned the medium into an exceptional talent. His award winning work can be found in the collections of museums, galleries and in the film industry.

He takes on private commissions and welcomes you to contact him at no obligation to discuss your requirements.



www.bobjohnstonbaskets.co.uk

10 OF THE BEST IRISH ARTISTS... *St. Patrick's Day Celebration!*

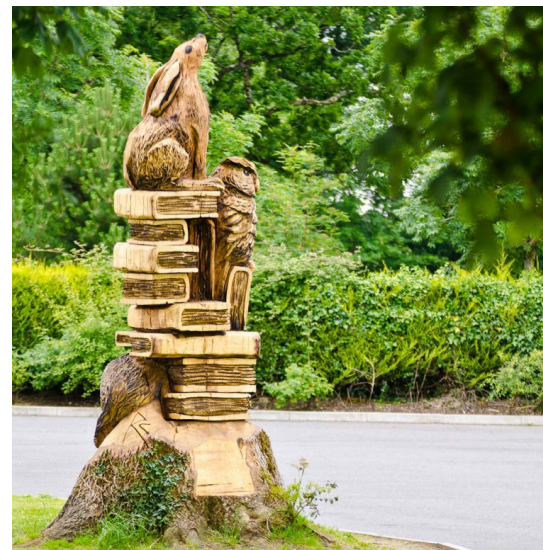


8. STEPHEN VAUGHAN
Thomastown,
Co.Kilkenny
Ireland
www.vaughanprint.com

My intaglio prints are made using a variety of traditional and digital printing techniques. They incorporate, etching carborundum and collograph and screen printing. As a practicing fine artist, living in the contemporary world, I also use modern printing techniques such as photo-etching and use computers to aid the design process.

The act of making is a fundamental, indeed primary, human activity. Artistic endeavour as part of that activity functions to interpret, illuminate and transform the world we live in.

www.vaughanprint.com



9. RICHIE CLARKE
Email me: clarkewood1@gmail.com
www.clarkewoodcarving.com

I was born and grew up in the town of Mullingar in Co Westmeath. Ten minutes' drive in any direction will have you immersed in the rural heartland, whether it's ancient hardwood forests, beautiful open bog land or crystal clear trout fishing lakes – it's all here.

I believe that where we come from shapes our sub-conscious and pushes us in a certain direction in life. Most of my childhood and adult life was spent in in these outdoor playgrounds. Wood carving connects me to nature and I think that is why I love it so much.

www.clarkewoodcarving.com

10. ALVA GALLAGHER
Visual Artist - Sculpture
Email: info@alvagallagher.com
www.alvagallagher.com

Alva Gallagher has shown extensively throughout Europe and Internationally and has won numerous awards for her work including The Jim McNaughton/ TileStyle Bursary Award with the Beacon Medical Group at the prestigious Allianz Business to Arts Awards and the 'Work of distinction' merit award at the 'Heal' Exhibition with The Naughton Gallery Belfast. Including having work in State, National and International Collections, The National Museum of Ireland Collins Barracks, The Secretary Generals Office, BMW, The iconic 'Gherkin' in the City of London.



www.alvagallagher.com

Promise of spring

The cold weather sweeping the country makes the first signs of spring all the more alluring. The spring exhibition in the oriel cric gallery in Crickhowell, holds the promise of fresh colour and light in paintings by amongst others Martin Truefitt-Baker, Jeremy Thomas and Veronica Gibson. This new exhibition will also give a tempting taste of what lies ahead during the Spring Bank Holiday weekend when more than twenty artists and galleries will open their doors to welcome visitors while celebrating the tenth annual Open Studios weekend.

Llangattock based painter and printmaker Martin Truefitt-Baker takes much of his inspiration from seasonal changes in the flora and fauna found in the local landscape, making the inclusion of his paintings all the more appropriate in this exhibition.



'First Swallows' Martin Truefitt-Baker

Much to the delight of visitors to the gallery the paintings of Jeremy Thomas take viewers on a voyage of discovery as he depicts his Welsh surroundings with unique charm. Suzette Pratten said, "We are particularly pleased that we will be showing original paintings alongside prints by Jeremy. The wealth of detail captured with his intricate style, opens a window to his creative world. It is little wonder that his many followers are so captivated by his paintings."



'Hearing the Light' Jeremy Thomas

She added, "Runner up in the Crickhowell Open Art exhibition 2017, Veronica Gibson will be exhibiting her expressive paintings depicting the Welsh landscape in it many facets. Veronica's work is widely acclaimed and we are looking forward to welcoming her on a more regular basis."

The spring exhibition will once again include a selection of paintings, prints, ceramics, glass, sculpture, textiles and jewellery.

Preparation for the annual Crickhowell Open Studio weekend (26 – 28 May 2018) is now in full swing at the centre and will this year celebrate its tenth year of showcasing art and craftsmanship in the Brecon Beacons and Black Mountains. Artists are once again invited to submit entries to the Crickhowell Open Art competition which will add to the weekend's excitement. The closing date for entries is 29 March 2018.

Part of the Crickhowell Resource & Information Centre, the fully accessible gallery is open seven days per week (Sundays 10am to 1.30pm)

CRiC, Beaufort Street, Crickhowell, NP8 1BN T: 01873 813667
E: gallery@visitcrickhowell.co.uk
www.visitcrickhowell.co.uk



image by Martin Truefitt-Baker

oriel
CRiC
gallery
visitcrickhowell.co.uk

Spring Exhibition

12 March - 20 May

Open Art Exhibition

25 May - 7 July

Crickhowell Open Studios

May Spring Bank Holiday 26-28 May
DEADLINE FOR ENTRIES 29 MARCH 2018



NEW REPORT CALLS FOR INCREASED INVESTMENT IN MUSEUMS & THEIR COLLECTIONS

Why Collect?, a report on museum collecting in the UK by historian Sir David Cannadine, was launched at Tate Modern. The publication was commissioned by Art Fund and the Wolfson Foundation to mark 40 years of their collaboration in bringing art and objects into public collections.

The report highlights the ever-widening gap between the spiralling prices of works on the international art market and the limited acquisition funds available to museums and galleries in the UK. It calls for increased investment in museums and their collections, as public spending on museums has decreased by 13% in real terms over the last decade. It is, writes Cannadine, a report that 'instead of giving comfort and reassurance, expresses anxiety and concern.' Cannadine's analysis of museum and gallery collecting traces its history from the 1830s to the present day, and is accompanied by 11 case studies which explore various facets of the social

and cultural impact of collecting. This is supported by statistical evidence from a national survey involving 266 collecting institutions. The report was undertaken to address the question of how, why and on what scale publicly funded museums and galleries continue to expand their collections. It includes the following:

Investment in museum collections

- Cannadine cites the £333m recently paid for Leonardo da Vinci's Salvator Mundi, more than half the entire amount that the Department of Digital, Culture, Media and Sport and other London-based official bodies allocated to England's museums and galleries in 2016-17.

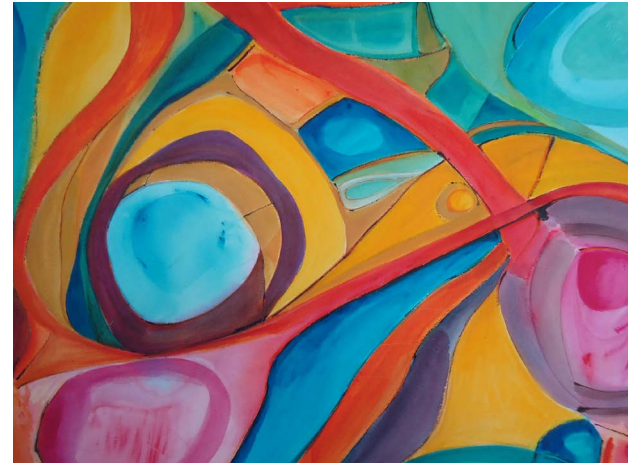
- A recent survey is referenced which shows the UK government spends less on culture in percentage terms than Denmark or France, or Hungary or Latvia.

- The museums of the UK have experienced a decade of diminished funding: in real terms, public spending on museums and galleries in England has declined by 13%, from £829m in 2007 to £720m 10 years later, and the reduction has been greatest in funding provided by local authorities.

- There is evidence to suggest that through this decline 'attention (and thus resources) has shifted away from what must be the core purpose [of] museums and galleries...to maintain, develop and curate their collections'.

THEATR
BRYCHEINIOG
ORIEL ANDREW LAMONT GALLERY

The Andrew Lamont Gallery, Theatr Brycheiniog
Canal Wharf, Brecon, LD3 7EW



Abstract Edge 2nd March – 8th April

Abstract Edge is a group of artists presenting an interesting mixture of semi-abstract and purely abstract paintings; painting at the edge of abstraction. The exhibition will include some sculpture.

IMAGE: Brontë Woodruff



Vulgar Earth Friday 13th April – 20th May

A not for profit artist's collective who take a thought provoking and emotionally charged look at the beauty and vulgarity of human relationships with the natural world and our current disassociation from it. Each member is an independent artist who adds their voice and vision to a collective message for change.

3 DAY WOODWORK COURSE Spinners Chair

Course fee: £350
9am - 4:30pm
Days to suit

A three day course focusing on basic turning, joining and shaping. Chairs are made from local ash and oak, inspired by a two hundred year old design, finished with a simple folk art design of the clients liking. These chairs look fantastic in the corner of a room or on a landing.

4 DAY WOODWORK COURSE Console table

Course fee: £450
9am - 4:30pm
Days to suit

A four or five day course, based on clients skills, level of finish and table design. The table is constructed using traditional haunched, mortise and tenon joints with tapered legs and a wax finish. Students will learn how to prepare their timber, use tools and construct the table.

WOODWORK COURSES

Wentwood Timber Centre

under the expert tuition of Paul Wooldridge

5 DAY WOODWORK COURSE Low/Coffee Table

Course fee: £500
9am - 4:30pm
Days to suit

Creating a low table with a variable design, it is made from local ash and oak and can be constructed to a variety of sizes. Students will learn timber processing, basic joinery techniques & finishing. The table is larger than its console counterpart and can include a magazine shelf.

5 DAY WOODWORK COURSE Couples Classes

Course fee: TBC
9am - 4:30pm
Days to suit

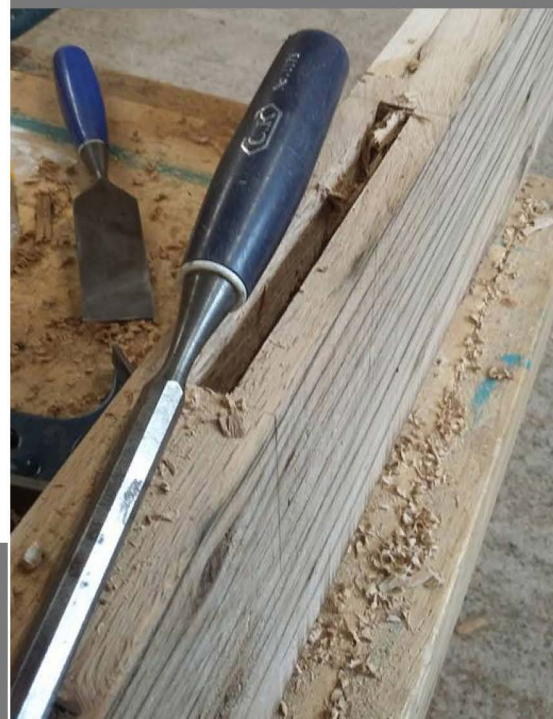
A perfect gift for valentines day or any time of year, the couples woodworking course is tailormade to each individual couples requirements.

Get in touch with Paul direct to discuss this further and to book your course.

Telephone after 6:30pm only: 07964681878
Email: wooldridgewoodwork@gmail.com
www.wooldridgewoodwork.com

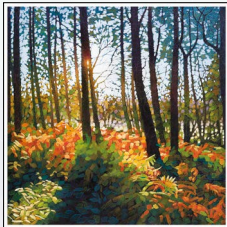


WOOLDRIDGE WOODWORK
www.wooldridgewoodwork.com



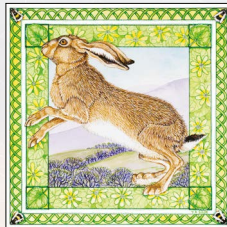
Ipixel Art

"I'm proud to let my customers do the talking"



Paul Burgess

"Hats off yet again to Craig at IPixel Art, I had to get some prints done but Craig was so busy he couldn't see me until 5pm, which was obviously when he should have been going home. He spent over one and a half hours going through everything with a fine tooth comb and wouldn't stop until it was all perfect. It's a real pleasure to work with someone who is so conscientious about what they do and reassuring that my work is in such professional hands."



Tracey-Anne Stich

"I've been going to I-Pixel since 2007 and will continue to take my watercolours for capture because Craig always delivers - fast, efficient, friendly service and beautiful prints, which I'm hard pressed to tell apart from my originals"



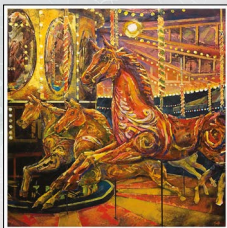
Lee Wright

"Since using IPixel Art to produce fine art reproductions of my work I have been able to reach a wider audience, thus dramatically increasing my profile and the revenues of my art business. I have been incredibly impressed at the skill and determination of Craig in ensuring that the reproductions of my art always look as good, and often better, than the originals!"



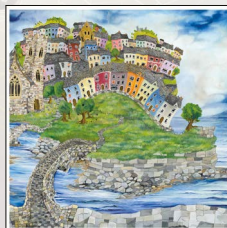
David Day

"I have used IPixel Art for many years. Craig has always been extremely helpful and has never let me down on urgent jobs. Craig is prepared to work closely with the artist, and the quality of the prints are incredible. My customers have regularly commented to me on how amazed they are with the printed versions of my work."



Goff Danter

"IPixel Art has made a major contribution to the development of my reputation as a professional artist. Craig's commitment to providing the best possible service by understanding the needs of his customers has enabled me to reach a much larger audience, sooner than expected."



Jeremy Thomas

"Craig has been reproducing my work for many years and has helped me enormously, he has an attention to detail that is second to none, working tirelessly to ensure that the subtleties in colour are captured perfectly and the printed image is beautifully crisp and clear. Craig is always prompt and professional, but above all else, a thoroughly nice guy. I'm always impressed by IPixel Art... thanks for all the hard work."

For over 12 years I-Pixel has been fortunate enough to have worked with a diverse range of both established and fledgling artists. Above you can see some of the testimonials given by just a small selection of them. I-Pixel Art specialise in the capture and reproduction of fine art, producing limited or open edition prints.

All meetings are by appointment only so please contact me using the details below.

38 Greenways, Hill Top, Ebbw Vale, NP23 6QN

craig@ipixel-design.co.uk 07852248073