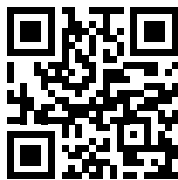


# ART SHARE LOVE

Wales & Borders



NOVEMBER 2018  
FREE ARTS MAGAZINE  
ISSUE 63

Cover Art: Jantien Powell



CHRISTMAS GIFTS  
CHAPEL COTTAGE STUDIO  
CHRISTMAS AT CRIC  
BLUE MAGPIE CONTEMPORARY CRAFT FAIR



CRAFTFOLK CHRISTMAS FAIR  
ART BY JENNY ALSOP  
JOHN PIPER EXHIBITION  
TAURUS CRAFTS CHRISTMAS MARKET





COVER ARTIST: JANTHEN POWELL

FEATURES:

CREATED BY HAND...THE ULTIMATE CHRISTMAS GIFT GUIDE

EDITORIAL:

CHAPEL COTTAGE STUDIO

ORIEL CRIC GALLERY

BLUE MAGPIE CONTEMPORARY CRAFT FAIR

CRAFTFOLK CHRISTMAS FAIR

JENNY ALSOP

JOHN PIPER EXHIBITION ELMSLIE HOUSE

TAURUS CRAFTS CHRISTMAS MARKET

say hello

Advertising & Editorial: Ingrid Nicholas

Email: [ingrid@artsharelove.com](mailto:ingrid@artsharelove.com)

Telephone: 07530875629

Get social with Facebook: @ARTSHARELOVEWALES

Get social with Twitter: @IngridASLW

[www.artsharelove.com](http://www.artsharelove.com)

## FINEGAN'S RAINBOW

Email: [mail@finegansrainbow.co.uk](mailto:mail@finegansrainbow.co.uk)

Facebook: Finegan's Rainbow

Tel: 07914 944280



"I'm Mandy Finegan-Lynch, an artist based in Birmingham. My art is mainly inspired by nature and the rural landscape, with a strong emphasis on trees, woodlands and a bit of wildlife. I'm fascinated by the aesthetic beauty of trees – viewed across the countryside or from within a dense forest and I try to capture this in my paintings. I love to explore the patterns of foliage and branches, to use colour, light and shadow to create scenes that evoke a sensation of drama or tranquillity. I generally paint with acrylics on canvas, often with a loose 'Impressionist' style which works quite well for leaves, sometimes I paint in finer detail to capture the intricacy of bare branches or maybe a woodland creature."

[www.finegansrainbow.co.uk](http://www.finegansrainbow.co.uk)



## Ewemoo Foot Rests

[www.ewemoo.co.uk](http://www.ewemoo.co.uk)

[ewemoocrafts@gmail.com](mailto:ewemoocrafts@gmail.com)

Visit us at:

Cardiff Christmas Market  
15th November - 16th December

EweMoo by Eric





Glorious glass, new ranges of ceramics, textiles, mosaics, jewellery, beautifully handcrafted Christmas decorations, paintings and prints will all contribute to a celebratory seasonal exhibition in the oriel CRiC gallery. It is a lovely destination to browse for gifts and enjoy the unique creativity of the exhibitors. The exhibition opens on the 12th of November and extends until early January for the twelve days of Christmas.



*Triptych by Jemima Jameson*

The 24th of November is a date to add to the diary as Crickhowell offers the perfect start to the holiday season and the perfect way to get in the festive mood! Join staff and volunteers in the gallery for warming mulled drinks and mince pies from midday onwards. Once again it will be a treat to explore the Centre for its selection of cards, nativity calendars, gifts and Welsh products before venturing upstairs to the beautiful exhibition and across the road to the CRiC Studio for a festive pop-up

exhibition. The festivity will continue in Crickhowell as the town Christmas lights will be switched on at 4pm after Santa's arrival at his grotto at 3.15pm. The town, which at the best of times is a desirable destination for shopping, browsing or just lingering over a drink or meal, certainly epitomises the magic of Christmas.



*L-R: Decorations by Rachael Blakeway, Mosaic coasters by Delia Taylor Brooke, Christmas Textiles by Mary Gladstone*

The original and unique shopping experience does however not end there. Crickhowell's popular annual Late Night Thursday shopping evening is set for the 6th of December. With music, activities and a Christmas fair spread across three venues, it promises to be a highlight of the season.

CRiC and the oriel CRiC gallery is open daily from 10 till 5, Sundays 10 till 1.30 [www.visitcrickhowell.co.uk](http://www.visitcrickhowell.co.uk)  
CRiC, Beaufort Street, Crickhowell, NP8 1BN T: 01873 813667  
E: [gallery@visitcrickhowell.co.uk](mailto:gallery@visitcrickhowell.co.uk)  
[www.visitcrickhowell.co.uk](http://www.visitcrickhowell.co.uk)



Detail from 'A Pale Moon' by Jemima Jameson

**CHRISTMAS AT CRIC**

[visitcrickhowell.co.uk](http://visitcrickhowell.co.uk)

12 NOVEMBER 2018 – 8 JANUARY 2019







## **The Blue Magpie Contemporary Craft Fair is set to return to Elmslie over the weekend of November 16th, 17th & 18th.**



This year, for the first time, Elmslie House will be opening their doors for a late night shopping experience and preview evening on Friday 16th November from 4.00 - 8.00pm. There will be mulled wine and home-made mince pies available and the opportunity to buy gifts for the Festive Season ahead.

As ever, Blue Magpie is committed to supporting and promoting the very best Designer-makers, including printmaker Emma Hardicker whose work is on display all year round at Elmslie. She is currently working on a commission for Elmslie House - which will be unveiled for the first time at the Friday night preview and will be available exclusively from Elmslie House and Emma in the future!



The opening hours on Saturday 17th & Sunday 18th November are 11.00 - 4.00pm and there will be home-made cakes, savouries and soup on offer throughout the day.

Admission is FREE so do go along and see the fabulous creations of the selected makers.



# CONTEMPORARY CRAFT FAIR



**Over 30 designer-makers exhibiting  
with a tea-room open all weekend**

**Friday 16th Nov 4-8pm**

**Sat 17th & Sun 18th Nov**

**11.00 - 4.00**

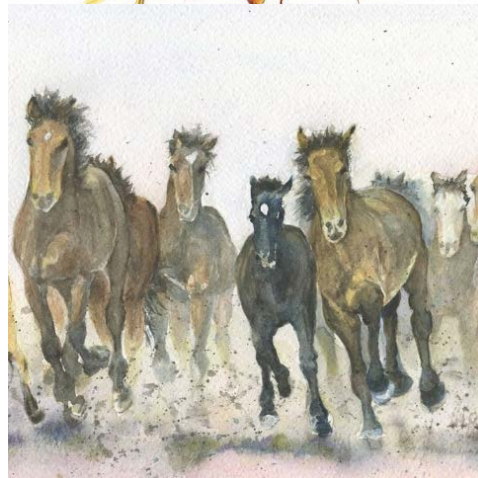
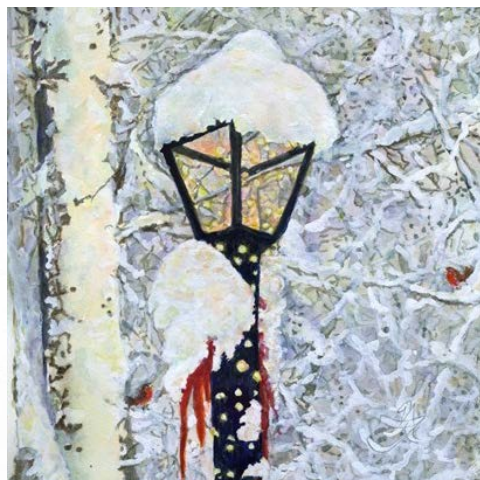
**FREE ADMISSION**

**Elmslie House, 8 Avenue Road, Malvern**



# WATERCOLOUR ART BY

*Jennifer Alsop*



[www.artfinder.com/jenny-alsop](http://www.artfinder.com/jenny-alsop)  
[www.etsy.com/AlsopArt](http://www.etsy.com/AlsopArt)

Creating a feast of watercolours, capturing nature at its best, such as botanicals, flourishing fauna and stunning British Wildlife, Jennifer Alsop's art is a must for any home or office space.

There are prints, which really celebrate the seasons, with all the colours that we love to associate such as autumnal oranges and the crisp whites of a snowy winters day. Jennifer's work doesn't stop there; her love of horses is clear with her depictions celebrating both horses galloping in the wild and on the racecourse.

Jennifer provides workshops and demonstrations and is soon to be offering watercolour classes. To express your interest, get in touch via her email:

[jennifer@jennyalsop.co.uk](mailto:jennifer@jennyalsop.co.uk)

With a wealth of experience, inspiration and tuition taken from artists from around the world, Jennifer has received such

accolades as 'Best Amateur Wildlife and Animal 2016 Award' for 'Plight of the Bumble Bee', a prestigious award given by the SAA (Society for all Artists).



To own a beautiful work of art from Jennifer Alsop's collection, simply visit her artfinder or Etsy Pages, as shown left.





Discover what makes the Cardiff Christmas Market so unique

## Cardiff Christmas Market 2018

Thursday 15 November to Sunday 23 December

Trading Hours;

Thursday 15 November – 10am to 8pm

Thereafter:

Monday to Saturday 10am to 6pm

Sunday 10am to 5pm

Late nights: 10am to 7pm on the 13, 14, 15, 20, 21 and 22 December

**Craft\*folk** have organised and developed the Cardiff Christmas Market in the pedestrian heart of Cardiff City Centre for over 20 years. We are committed to providing a platform for artists, crafts people and food and drink producers to exhibit and sell their work directly to the general public. In today's economic uncertainty it is more important than ever to keep our talented makers to the forefront of retailing.

Our beautifully decorated wooden stalls are located in St John Street, St John's Church area, Working Street, the Hayes, Trinity Street and Hills Street.

When you visit, you can be assured that you will be purchasing original work from each and every one of our talented makers: bespoke silver jewellery, wooden turned gifts, original artwork across all mediums, handmade quilts and textiles, traditional pewter gifts and slate products to name just

a few combined with a variety of seasonal food and drink to create a vibrant Christmas atmosphere. You can also chat with them about their products, how they are made, and discuss commissions if you wish.

A comprehensive list of all participants will be published on our website closer to the start of the market.

If you are planning to visit the market whether individually or as part of a coach trip and require further information about the market or would like us to send you our leaflet, that includes a map showing all our stall locations to assist you in getting the most out of your visit, please get in touch.

**Craftfolk**

**07974561514**

**jane@craftfolk.com**

**www.craftfolk.com**

**www.cardiffchristmasmarket.com**

# Cardiff Christmas Market

AN **ALTERNATIVE**  
**OUTDOOR**  
**SHOPPING**  
**EXPERIENCE**

[craftfolk.com](http://craftfolk.com)

[cardiffchristmasmarket.com](http://cardiffchristmasmarket.com)



- Organised by Craft\*folk
- Meet the makers
- Over 80 wooden stalls
- Buy local, buy handmade

Rolling programme of over 200 exhibitors over 39 days

Thurs 15 Nov 2018

To Sun 23 Dec 2018



T: 02920 514732 M: 07974561514



# Christmas *created by hand at*

## THE ULTIMATE GIFT GUIDE

ELLIE BURTON  
GLASSBLOWING



[www.ellieburtonglass.co.uk](http://www.ellieburtonglass.co.uk)

## UZUMLU GLASS ARTS

*Creating Kiln-Fused Glass, Designed & Made By Fiona Robson*



Fiona's glass is inspired by her travels throughout Britain and abroad; her work varies from framed pictures, flower candle stands, cottage garden candle sconce, Cornish waves sconce, coasters and jewellery. In 2019

Fiona will be creating bigger pieces, such as splash backs, glass tiles and wall features.

*"The future is always changing and that's what I find exciting when being creative".*

In 2019 Fiona will be offering 2-hour taster lessons for 2 persons max to create a coaster and pendant.

Contact her direct for more details and to book. Will you be hooked on the magic of glass?

Stockists include Craft Renaissance, Kemys Commander, USK

Exhibiting at St Pierre Golf Club Xmas Fair on Sunday 25th November, helping support St David's Hospice

Enquiries contact: [fiona7355@yahoo.com](mailto:fiona7355@yahoo.com)

Etsy Shop: [UzumluGlassArts](https://www.etsy.com/shop/UzumluGlassArts) Facebook: [UzumluGlassArts](https://www.facebook.com/UzumluGlassArts)

## TRACEY-ANNE SITCH

Christmas gifts for the nature-lover in your life, featuring illustrations based on my natural history watercolour paintings.



I will be selling my originals, prints, books, mugs, cards and more at various Christmas shopping events locally up until the festive season.

Details of the venues and dates can be found at:

Facebook: [Tracey-Anne Sitch Artist](https://www.facebook.com/TraceyAnneSitchArtist)

Website: <http://www.traceyannesitch.co.uk>

Email: [traceyannesitch@sky.com](mailto:traceyannesitch@sky.com)

Instagram: [traceyannesitchartist](https://www.instagram.com/traceyannesitchartist)

## STEVE MANNING PRINTMAKER

Steve is a printmaker living and working in Exeter, drawing on estuary and moorland for inspiration.

Limited, small edition prints which convey a sense of depth and light and capture a fleeting moment of stillness amid the constant movement of the natural world.

Prints available from:

[www.etsy.com/uk/shop/stevemanningprints](https://www.etsy.com/uk/shop/stevemanningprints)

[www.stevemanningprints.co.uk](http://www.stevemanningprints.co.uk)





# Adele Pask Art

Email: [adelepask1@gmail.com](mailto:adelepask1@gmail.com) Tel: 07443439228 Facebook: @Adele Pask Art



**Currently Exhibiting At: Craft Renaissance, Kemeys Commander, Usk & Giles Gallery, Pontyclun**

With a BA Hons in Graphic Design and Illustration from Newport College of Art, Adele Pask has worked as a freelance illustrator/designer before embarking on a teaching career. Having enjoyed 25 years in a thriving art department in Radyr Comprehensive School and had the privilege of contributing to many student's artistic and personal development she is now pursuing her own creative interests. With a reignited passion for painting, a love of the outdoors and a lifelong appreciation and fascination with the natural world she continues to be inspired by nature's limitless subject matter. Adele's work incorporates a love of pattern and detail graphically captured through the mediums of watercolour, gouache and acrylic.



## Handmade Creations By Folky Felt

Emma Bevan creates unique, contemporary creations in her needle-felted collections. Using her imagination and inspiration from the local landscapes, Emma's creatures and paintings are all handmade in her cottage studio, using local fleece. You can buy from her Etsy shop, where Emma will make to order, or buy directly from her at an event, or email to chat about your ideas for a commission. You can also choose to buy a gift voucher or a kit, which are also popular gifts!

To contact Emma, you can Email: [emma@ffolklyfelt.com](mailto:emma@ffolklyfelt.com), or visit her Etsy shop: <https://www.etsy.com/uk/shop/FfolklyFfelt>

# HANNAH DUNCAN CREATIONS

Unique handmade jewellery available at:

Tides, Mumbles

Queen Street Gallery, Neath

Court Cupboard Gallery, Abergavenny

Online shop coming soon



Necklaces from £45



Bangles from £60

Facebook and Instagram:

@hannahduncancreations

[www.hannahduncancreations.com](http://www.hannahduncancreations.com)

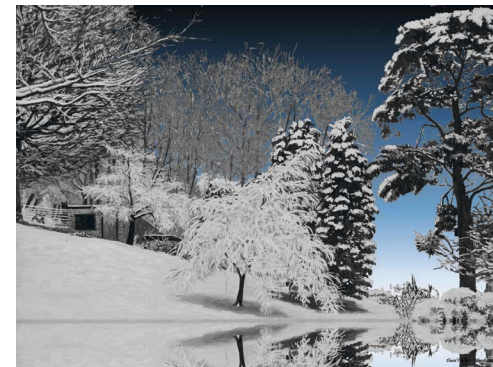
## DAVID PHILLIPS ART

Tel: 07905 363156

Email: [dhdphillips@btconnect.com](mailto:dhdphillips@btconnect.com)

### 'GHOSTS'

There is a bit of a morbid underlying theme to the painting in that my parents have both passed recently. The element removed is the family house that as a home is always more than the bricks and mortar with which it was created. A fairly obvious symbolism but I think this is what makes the title work. However if you know the aspect of my parents



house – it faces roughly south – you can see that this is a scene at dawn and is meant to show an optimistic start to a fundamental change in your life.

There is a counterpoint created by the lake in the foreground which is a nod of respect to a lyric by the Finn brothers ... "There's a mirror lake before me but I'm frozen when it's time to jump."

[paintingsbydavidphillips.com](http://paintingsbydavidphillips.com)





I am inspired by things I see in nature, a passing comment or a line in a poem. Then I make a rough sketch. Welding is the exciting part as I see the work gradually take shape. But the best bit is standing back and comparing my finished work with the rough sketch from which it has emerged. I am fascinated by the beauty, and indeed the art, that can be found in finely engineered gears, bearings etc. that make up engines. In today's throw away society I try to use 90% of my materials from scrap so that they have a very low carbon footprint.

From the 12 -24th November I will be having a shared exhibition at the Old Stable Gallery, Corn Square, Leominster. Sharing the space with Linda Thomas, photographer specialising mainly in the natural world and Jan Latusek who creates both functional and art pieces using reclaimed Victorian bricks and hardwood.

My work can be seen at The Trumpet Corner Gallery near Ledbury and also at my studio - see my website. Commissions welcome.

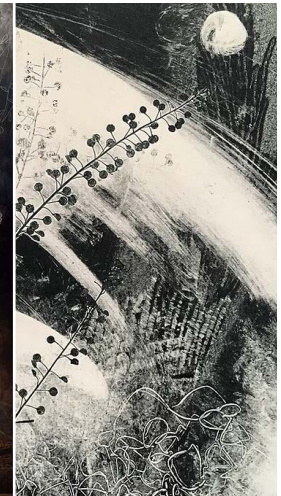
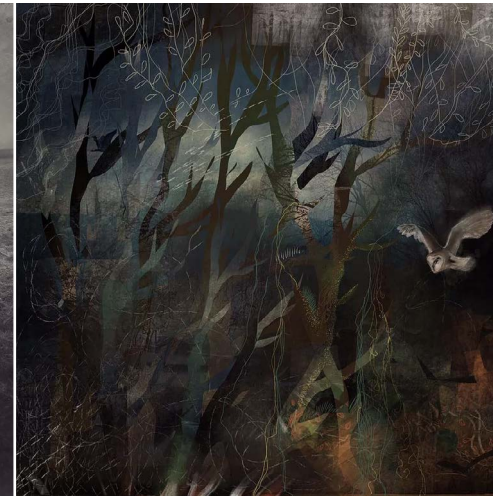
[www.paulsmetalcrafting.com](http://www.paulsmetalcrafting.com)

Tel: 01981 251168

Email: [paulrg62@gmail.com](mailto:paulrg62@gmail.com)

# Sarah Jameson

PHOTOGRAPHS - DIGITAL DRAWINGS - MONOPRINTS



[www.sarahjameson.co.uk](http://www.sarahjameson.co.uk)

## Illustrator - Betty James Designs

Instagram & Facebook: [@bettyjamesdesigns](https://www.instagram.com/bettyjamesdesigns)

Website: [bettyjamesdesigns.com](http://bettyjamesdesigns.com)

Email: [bettyjamesdesigns@gmail.com](mailto:bettyjamesdesigns@gmail.com)



I set up Betty James Designs little over a year ago expressing my love of illustration, creating detailed quirky illustrations of my home town Blaenavon and my love of all things Welsh. I use a mix of watercolour and digital painting to create my illustrations and enjoy adding detailed scenes within them.

I especially love creating Christmas scenes, which is shown in my Christmas cards as it is my favourite time of year! I am gradually adding to my Betty James collection, creating mugs and, recently, illustrated maps of Welsh towns which I love adding little characters too.

Betty James will be expanding this year, with my husband joining the team offering Creative Branding and Web Design. Commissions are always welcome so please drop us a line.



# UNIQUE GLASS ART BY MICHELE

IMAGES: Glass door panel inspired by a recent 30th anniversary celebration commission.



Email: [michele@uniqueglassart.co.uk](mailto:michele@uniqueglassart.co.uk)

Twitter: @MicheleGlassArt & Instagram: [unique\\_glass\\_art](#)  
website: [www.uniqueglassart.co.uk](http://www.uniqueglassart.co.uk)

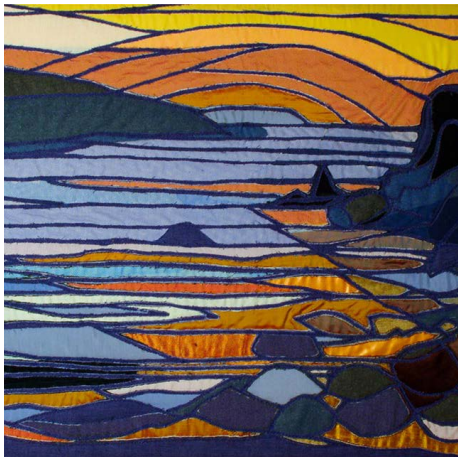


IMAGE: 'Peach Sunset: Pwllgwaelod'

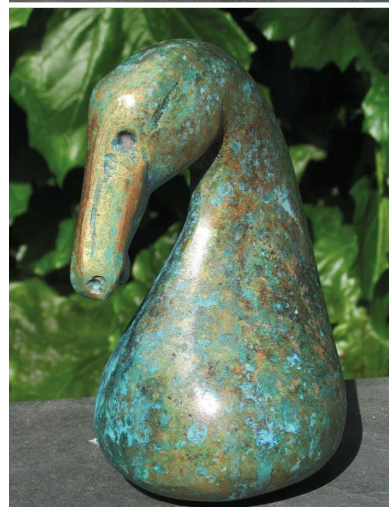
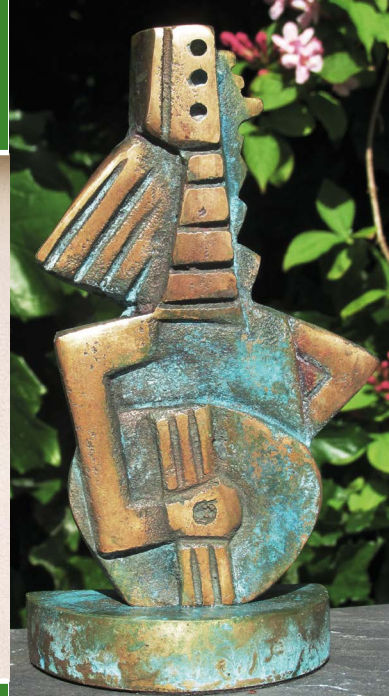
**For Seasonal Opening Times, Sept – Oct 2018, please see website home page base.**

Inspired 2 Collect Gallery  
Albion Arcade, 4 Blue Street  
Carmarthen  
SA31 3LQ

## TEXTILES ARTIST, CYNTH WEYMAN

Tel or Text: 0777 2820313  
[www.cynthweyman-artist.co.uk](http://www.cynthweyman-artist.co.uk)  
[www.inspired2collect.co.uk](http://www.inspired2collect.co.uk)

"I always start with colour. Watercolour paintings depict traditional images to prepare for my textile relief technique developed and named as Intaglio Strati". Welsh artist Cyth Weyman transforms her Fine Art paintings into multi layered textile landscapes, seascapes and figures, which are striking, emotive, full of colour, narrative, emotion and beautiful. "I carve into 15 layers of luscious Rajasthan silks, fine wools and cottons to create high textile relief panels and art quilts. Some pictures are enhanced with hand embroidery. Also, high quality limited edition themed collections of 'my posh scarves' in silk, glee prints, blank cards and mugs."



Sculptor Perryn Butler has a thirst for knowledge and a compulsion to create.

Over three decades she has produced a wonderfully spiritual body of work that draws on her passion for ancient cultures, and the environment and history of Wales.

Her sculptures speak to people on many levels. They evoke an emotional connection, and a desire to touch and handle them in addition to being beautiful pieces of art.

Perryn's works are bought by collectors worldwide from Europe to Australia, Asia and the Americas.

For a truly unique gift for your loved one this Christmas, why not purchase one of Perryn's small, easy to post bronzes.

Get in touch via:

Tel: 01437 621759

Email: [perrynbutler247@btinternet.com](mailto:perrynbutler247@btinternet.com)

For images Google Perryn Butler

Perryn now has an instagram page, follow her:  
[@perryn\\_butler](#)

[www.perryn-butler.co.uk](http://www.perryn-butler.co.uk)



P  
E  
R  
R  
Y  
N  
  
B  
U  
T  
L  
E  
R





## Oriel Mimosa Fine Art

“Oriel Mimosa is a gallery that specialises in Welsh art, stocking a range of original works and limited edition prints to suit all tastes – from the more prominent Welsh artists to the lesser known up-and-coming creative talent that take their inspiration from this beautiful country of Wales. We also offer a professional bespoke framing service conveniently located at our gallery on the main road through Llandeilo.”

Oriel Mimosa Fine Art  
68 Rhosmaen St,  
Llandeilo, Carmarthen,  
SA19 6EN  
Tel; 01558 328074



[www.orielmimosa.com](http://www.orielmimosa.com)

## Oriel Mimosa Fine Art & Ceramics

“Our second location at 6 Market St is perfect for art lovers and ceramics collectors alike, or anyone looking for that unique gift. We stock beautiful pieces of local Welsh pottery, as well as original works of art and limited edition prints. We also have monthly art exhibitions in our gallery space upstairs, featuring many of Wales’ best known artists.”

Oriel Mimosa Fine Art & Ceramics  
6 Market St,  
Llandeilo, Carmarthen,  
SA19 6AH  
Tel; 01558 822215



[www.orielmimosa.com](http://www.orielmimosa.com)



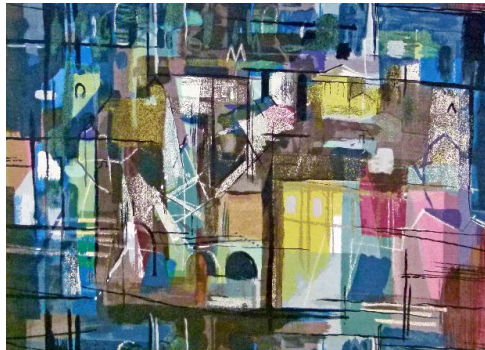
John Piper was a prolific artist whose life extended across most of the twentieth century. The son of a successful Surrey solicitor, he might well have followed in his father's footsteps, but his death in 1927 released Piper to pursue his artistic inclinations with a vigour which characterised his entire career. Piper's output was both extensive and broad ranging, taking in more familiar approaches such as painting and printmaking but extending to the design of costumes and theatre sets, ceramics, stained glass, fabrics, mosaics and even firework displays. All were tackled with enthusiasm, a commitment to technical proficiency and above all, by a playful and creative imagination.

Although he worked in such a wide range of mediums, there are recurrent themes across Piper's extensive output, principally his love of buildings - and especially churches - set in their landscape. Taking this focus, he constantly refined and developed his vision, frequently working on the exciting boundary between the abstract and the representational. Piper's work is sometimes dismissed as picturesque and sentimental, but this is to overlook the stylistically dynamic quality of his work, especially in his printmaking.



*Late Summer Flowers*

This exhibition brings together a rich and varied collection of over 60 of his artworks, extending over 40 years, and including several wonderful paintings and drawings. Although the emphasis is placed on his limited edition lithographs and screen prints, particular attention has been given to the colourful fabrics he designed for manufacturers including David Whitehead and Arthur Sanderson. John Piper worked extensively in Wales and the borders, and whilst they are well represented in this exhibition, the collection captures locations across England and into Scotland, France and Italy.



*Stones of Bath, Blue Fabric*



*Harlaxton Manor*



FIFTIES ART PRESENTS

## JOHN PIPER IN MALVERN

Over 60 fabrics, limited edition prints, original drawings & paintings



### OPENING TIMES

Fri 23rd: Private View 6-8 pm  
 Sat 24th & Sun 25th: 11- 4.30 pm  
 Wed 28th - Thurs 29th: 1- 4.30 pm  
 Fri 30th: 1-6 pm  
 Sat 1st Dec: 11 - 4.30 pm

### DETAILS

Elmslie House, 8 Avenue Road  
 Great Malvern, WR14 3AG  
 Further Information & the Private View:  
[richard@fiftiesart.com](mailto:richard@fiftiesart.com)  
[www.fiftiesart.com](http://www.fiftiesart.com)



## Christmas is coming to Chapel Cottage Studio...



**T**his year we're gearing up for our best Christmas Exhibition & Gift Fair yet, we have so many amazing artists and makers taking part, we can hardly wait to show you what we've got on offer...

You can expect a fabulous exhibition of original art including work by Jantien Powell, Peter Cronin, Howard Jones, Kip Kavallares, Martin Truefitt Baker, Jude Lowery and many more PLUS a great selection of prints, greetings cards and merchandise featuring their work.



Alongside the exhibition we have a wonderfully eclectic gift fair that ranges from stunning hand made jewellery by Rosemary Cochrane, textiles by Little Bird, Penny Turnbull and Ffolkyfelt, wood work from Austin Matthews & decorations from Izabela Kielt to ceramics from APCeramics, handwoven willow from Wyldwood Willow, garden sculpture from Daren Greenhow and much much more! It's the perfect way to kick start your Christmas Shopping, pick up truly beautiful, handmade gifts and put a smile on the face of a local artist or maker at the same time – a happy Christmas for everyone!

As usual, tea, coffee, mulled wine and mince pies will be on offer, all with twinkling candle light and Christmassy music to set the mood.



**Opening Evening:**  
Friday 30th November, 7 - 9pm

**Exhibition & Gift Fair: Saturday 1st – Sunday 2nd**  
December 10am – 4pm

## NEVER BEEN TO CHAPEL COTTAGE STUDIO BEFORE?

We'd love you to come and give us a try - present this code at any time during our Christmas exhibition and gift fair (Nov 30th - Dec 2nd) and you'll get FREE entry into a prize draw to be in with a chance of winning a FREE day's workshop of your choice (subject to availability - prize worth £55) here at Chapel Cottage Studio.

**Prize Draw Code - CCSASLW18**

## Chapel Cottage Studio's Mini Winter Wonderland Competition

...enter by the 24th November!



### Prizes for 1st place and runner up

You are invited to create a piece of work on the theme of "Winter Wonderland".

The challenge...all entries must be no bigger than 8 inches (20cm) square!

Entries can be in any medium and of any subject. You may enter up to 3 pieces and as many entries as possible will be included in our Christmas Exhibition and Gift Fair.

Visitors to the Exhibition will be asked to vote for their favourite entry and the piece with the most votes will be declared the winner!

Entry is FREE - all entries must be received by Saturday 24th November

– go to: <https://chapelcottagestudio.co.uk/product/mini-winter-wonderland-competition>  
for more information on how to enter.





# CHRISTMAS MARKET

## ***Making the most of a festive time***

Over the first three weekends in December, the onsite makers and creative businesses at Taurus Crafts will be joined by over 30 independent traders and 100's of locally-grown fresh cut Christmas Trees to create the area's largest Christmas Market. Featuring; live performances, choirs, singing groups and delicious food and drink.

The centre's bustling Christmas market showcases the best the area has to offer featuring a diverse range of original gifts, jewellery, artworks, crafts, local cider, beer & wine, handmade preserves and sweets. Not only will you be spoilt for choice at the market, visitors will also have the chance to meet the talented onsite designer-makers based at Taurus Crafts.

Visitors will be able to get in the festive spirit during the market weekends with performances from local choirs, singing groups and bands. Also, not to be missed is the family festive entertainment marquee full of festive cheer and family fun with magic shows, puppet shows and musical performances, there is something that all the family can enjoy.

Available throughout December they offer a range of 'very local trees' grown on Lydney Park Estate.

These trees are grown by experienced professional foresters who's care and attention ensures high quality, well-shaped trees available in different heights. Prices are reasonable and the carbon footprint couldn't be better as they are grown under one mile away from Taurus Crafts. The trees are felled as freshly as possible which greatly improves their needle retention properties. On site, visitors can select their own tree 'un-netted' so you really can see what you are getting before its made easily portable and put in a net.

The opportunity to order special large trees (9ft plus) is available, email or phone to find out more and discuss your requirements.

To get all the details, dates and times check their Facebook page and website, they are all kept up to date.



TAURUS CRAFTS

CHRISTMAS MARKET

**FOOD & DRINK**

**ARTS & CRAFTS**

**GIFTS & TOYS**

**1st 2nd 8th 9th 15th 16th DECEMBER**

**10am-5.30pm FREE ENTRY & PARKING**



Visitors will be able to get into the festive throughout december by visiting our Paper & Planes Shop which has been transformed by Santa's Elves into a magical toy workshop throughout December. The Elves have been extremely busy and have filled Santa's sleigh with some incredible toys, tree decorations, cards, wrapping paper, table decorations and lights to set the scene for your own Christmas festivities! **The Christmas Shop is open daily, 10am - 5pm.**

**TAURUSCRAFTS.CO.UK - 01594 844841**      
**LYDNEY, FOREST OF DEAN, GL15 6BU - 01594 844841**





# DUFFOGRAPHY

Fine Art Reproduction

## Image capture

To create a digital version of your painting I use the latest camera technology to produce a 16 bit image that is a minimum of 300dpi at a "1 to 1" scale to the original art. All images are then colourmatched using the final print media.

Capture cost is based on the size of the longest edge of the painting.

Upto 12" - £10 Upto 23" - £15 Upto 35" - £20 Over 35" - £25

If you already have a digital version of your art that you would like to use for printing that's fine, just email it through to me or bring it in on a memory stick / cd and I can print from there.

## Printing

All prints are produced using a Cannon IPF 8400 with the 12 colour Lucia EX pigment ink system, coupled with a range of Hahnemuhle fine art papers. There is no minimum print order and prints are usually ready for collection / shipping within 48 hrs.

Print discounts are available depending on the quantity of prints ordered and the prints can be any combination of design or size to qualify.

6+ - 15%,      12+ - 20%      24+ -25%      48+ -30%

**All meetings are by appointment only so please contact me on the details below.**

**DUFFOGRAPHY**

38 Greenways, Hill Top  
Ebbw Vale, NP23 6QN

07852248073

[craig@duffography.co.uk](mailto:craig@duffography.co.uk)