

# ART SHARE LOVE

Wales & Borders



DECEMBER/CHRISTMAS 2016  
FREE ARTS MAGAZINE

**COVER ARTIST: ALEXANA BLOTT**



ALEXANA BLOTT (COVER ARTIST)  
CHRISTMAS AT CHAPEL COTTAGE STUDIO  
GALLERIES OF WALES  
WATERCOLOURS FROM RHIANNON ART  
CREATIVE CHRISTMAS GIFTS  
EWEMOO

CHRISTMAS AT THE ORIEL CRIC  
NEON ARTIST 'COURTY'  
GREAT BRITISH ARTISTS  
SKY ARTS 'LANDSCAPE ARTIST OF THE YEAR'  
JOHN ST GALLERY  
IPIXEL  
AND SO MUCH MORE...



**ART  
SHARE  
LOVE**  
Wales & Borders



JOIN OUR CREATIVE NETWORK ON FACEBOOK & TWITTER!



It's nearly Christmas and the creative festivities are once again upon us.

Christmas exhibitions, gift fairs, creative courses and wonderful artists whose work would make for the perfect gift. Be inspired, fill yourself with Christmas cheer and invest in the gift of art and craft this Christmas.

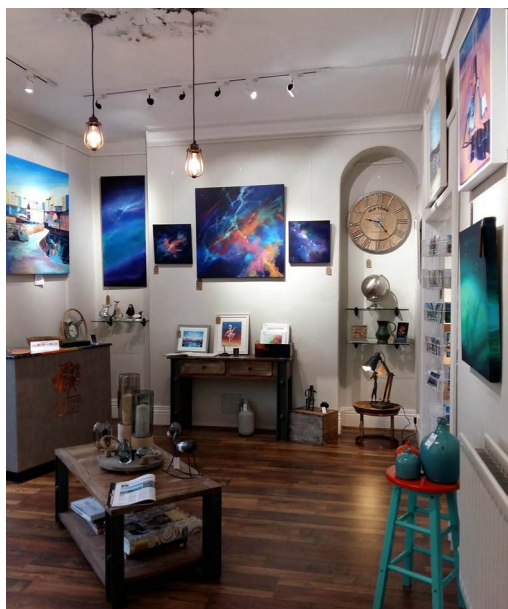
A big thank you to all who have contributed to ART SHARE LOVE 2016 editions.

Happy Christmas and have a happy new year.

*Ingrid*

**Advertising: ingrid@artsharelove.com Telephone: 07530875629 www.artsharelove.com**

Disclaimer: Reasonable care has been taken to ensure that the information contained in this guide in print and on the website are as up-to-date and accurate as possible, as of the time of publication, but no responsibility can be taken by ART SHARE LOVE Magazine for any errors or omissions contained herein. Furthermore, responsibility for any losses, damages or distress resulting from adherence to any information made available through this guide/website is not the responsibility of ART SHARE LOVE Magazine. Readers are advised to check with listings/article information with event providers to avoid disappointment. No responsibility will be accepted for any errors or omissions.



John Street Gallery is a new boutique gallery in Llanelli Carmarthenshire run by husband and wife team Ivano and Denise Di Battista. Original work is produced by Denise, while Ivano offers a bespoke fine art printing service. At the gallery you will also find some quirky bits and pieces to decorate the home or merely to make you smile.

***"We would like to wish all our customers a Happy Christmas. Thankyou for your custom"***

**www.artofwales.com**

Email: [contact@johnstgallery.com](mailto:contact@johnstgallery.com) Tel: 01554 771562

John Street Gallery, 2 John Street, Llanelli

# Chapel Cottage Studio Christmas Exhibition & Gift Fair

**Friday 2nd - Sunday 4th December 10am - 4pm**

**Artwork - Cards - Craft - Gifts - Refreshments  
Free entry - everyone welcome!**

At Chapel Cottage Studio, Llanddewi Rhydderch, Abergavenny, NP7 9TT  
T: 01873 840282 M: 07935 934898 E: [info@chapelcottagestudio.co.uk](mailto:info@chapelcottagestudio.co.uk)

**[www.chapelcottagestudio.co.uk](http://www.chapelcottagestudio.co.uk)**

## Christmas at Chapel Cottage Studio

**A**void the queues at the check outs and get ahead with your Christmas Shopping at Chapel Cottage Studio's Christmas Exhibition and Gift Fair!

You will find a varied exhibition of affordable art work by Jantien Powell as well as several of the talented tutors and students of the Studio including original paintings, prints and greetings cards.

Add to this an eclectic mix of locally made crafts and gifts including pieces by Bowerbird Bears, Fauxdermy, Jewellery by Rosemary Cochrane, beautiful felted pieces by Sarah Goodgame (Little Bird), wire sculptures, handmade Christmas Decorations, paper craft and much more and it's the perfect place to pick up that special something.

Of course being Chapel Cottage Studio, there will also be yummy home made mince pies

on offer as well as tea, coffee and Christmassy drinks! Why not take your mince pie up into the cosy Shepherds Hut to enjoy the view?

As if this wasn't enough to tempt you out to Llanddewi Rhydderch, just 500 metres down the road Jan Thomas will be holding her own Christmas Shopping weekend at the wonderful Textiles at the Weir. Jan will have a unique range of gifts on offer, including Gwlan Y Fenni woollen items produced from the fleece of their own Coloured Ryeland Sheep, as well as textile landscapes, cards and gift vouchers for her textile courses.

What better way to spend a Festive weekend? We'd love to see you! Use the code **ASLWGV** For an extra £5 value on any Gift Vouchers.

**[www.chapelcottagestudio.co.uk](http://www.chapelcottagestudio.co.uk)  
e: [info@chapelcottagestudio.co.uk](mailto:info@chapelcottagestudio.co.uk)  
t: 01873 840282**



# EWEMOO

[www.ewemoo.co.uk](http://www.ewemoo.co.uk)

2016  
EVENTS

Brecon Craft Market 2016

Saturday 3rd December  
Saturday 17th December

Christmas orders taken now!

Cardiff Christmas Market 2016

10th November to 23rd December

T: 07778102238

[ewemoocrafts@gmail.com](mailto:ewemoocrafts@gmail.com)



[www.ewemoo.co.uk](http://www.ewemoo.co.uk)



# GALLERIES OF WALES



## Y GALERI CAERFFILI

Ground Floor, The Visit Caerphilly Centre,  
The Twyn, Caerphilly, CF83 1JL  
Tel: 02921 322570 [www.ygaleric caerffili.co.uk](http://www.ygaleric caerffili.co.uk)

Y Galeri Caerffili is a warm and welcoming gallery located in the Visit Caerphilly Centre directly opposite the Castle. It specialises in showcasing work by established and emerging Welsh artists through a regularly changing gallery programme. The gallery also sells handcrafted jewellery, glass, ceramics & wood from more than 50 designers and makers making this an ideal venue for exclusive festive gift ideas during the run up to Christmas.

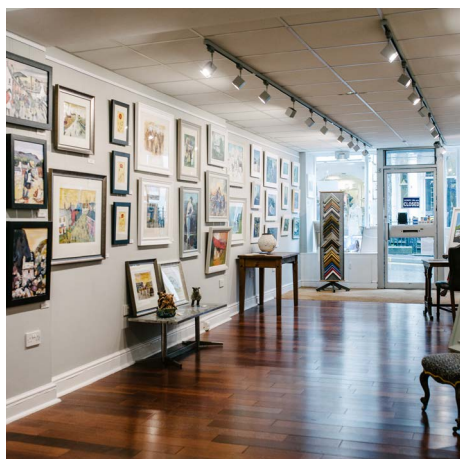


## CRAFT RENAISSANCE

Kemeys Commander, Monmouthshire NP15 1JU  
on B4598 road near Chainbridge 3 miles from Usk  
Open Wed – Sun 10.30 – 5pm and Bank Holiday Mondays  
[www.craftrenaissance.co.uk](http://www.craftrenaissance.co.uk)

FB: @Craft Renaissance Gallery Tel: 01873 8808879

Craft Renaissance is an independent art and crafts centre in the beautiful Usk Valley, Monmouthshire, situated in converted barn buildings with a stunning oak framed gallery, gallery shop, onsite makers and café. The exhibition programme focusses on talented artists and makers based in Wales. Their gallery shop has an exciting and tempting mix of contemporary art and crafts or you can just relax in the café. Free parking and entry.



## ORIEL MIMOSA

68 Rhosmaen St, Llandeilo, Carmar, SA19 6EN  
Tel: 01558 328074

Email: [sales@welshartist.co.uk](mailto:sales@welshartist.co.uk)  
[www.orielmimosa.com](http://www.orielmimosa.com)

'Oriol Mimosa is a gallery that specialises in Welsh art, stocking a range of original works and limited edition prints to suit all tastes – from the more prominent Welsh artists to the lesser known up-and-coming creative talent that take their inspiration from this beautiful country of Wales.

We also offer a professional bespoke framing service conveniently located at our gallery on the main road through Llandeilo'.



*Taking bookings now for 2017 school workshops!*



**CHRISTMAS CARDS & 2017 CALENDARS  
AVAILABLE NOW!**

## EVENTS

**Howells School Christmas Fair - 2nd December**  
**Builth Wells Winter Fair 28th & 29th November**  
**Aberglasney Winter Fair - 2nd-4th December**  
**Christmas Market, The Hayes, Cardiff - 10th November - 23rd December**

[www.rhannonart.co.uk](http://www.rhannonart.co.uk)



## Q & A: Metal Sculptor & Front Cover Artist

# ALEXANA BLOTT

How did your art evolve into what you create today?

I first started using cutlery as an artistic medium 6 years ago in college. I've always been heavily inspired by scrap metal art and knew it was an art form I had to try for myself. Although I initially intended to use a mixture of found materials to create sculptures, I fell in love with cutlery as soon as I used it and knew I only wanted to use cutlery after that. Since then, it's largely been a process of honing my technique and trying more and more exciting designs. Before I started my cutlery sculptures I'd never even been near a welder, so it's been an interesting learning curve!

What inspires you and what is your favourite piece to date?

Nature is by far, my greatest inspiration. I've loved animals since I was a child, and have always been amazed at the beauty of the natural world. One of the most important things I try to portray in my work is a sense of life and movement- I want each piece to truly represent the living animal or plant that I've sculpted. My favourite piece has to be my Red Tail Hawk. Standing guard over her nest, she might not be my largest, most impressive piece, but I think she turned out perfect.

How do you begin creating each sculpture?

The longest part of making any new sculpt is the designing. I have to learn the shapes and character of each animal perfectly before I can begin making it. This involves several weeks of studying, drawing and deconstructing each animal to learn its shapes and movements. I then begin designing how the cutlery would be positioned to make each part, and what types of cutlery I will need. It's very much guess work though- once I start sculpting the design can change greatly depending on the curve of a spoon or how the weight settles. It's a very organic process, and there's no real way of knowing how any sculpt will turn out.

What exhibitions do you have upcoming?

2017 is very much an open book for me at the moment. I'll be attending multiple Christmas markets across Cardiff and Hereford, and then in 2017 I want to really focus on expanding my range of sculptures and getting into as many markets and craft fairs as possible.

What is your biggest artistic achievement?

That's a tough one to answer. Though there are many moments I've been proud of, I think my greatest has to be my final degree show exhibition. I set out to make 8 small sculptures and ended up with a huge flock of exactly 100 birds, guarded by a huge golden eagle. The response I got was phenomenal and really boosted my confidence as an artist

Where can people purchase your work?

My work can always be found on my website and online shop, and is currently for sale at Cardiff MADE and Glass by Design in Penarth, Wales.

# ALEXANA BLOTT

METAL SCULPTURES INSPIRED BY NATURE



[www.alexana-blott.co.uk](http://www.alexana-blott.co.uk)





## QUINNELL CANDLES

A small family run business, we are based in the beautiful Welsh hills, near Usk, in an 18th century Welsh country house with the barn as a converted workshop. The candles we produce are each hand poured using 100% soya wax, unbleached natural wicks with essential and beautiful fragrance oils to keep the candles as environmentally friendly as we possibly can.

With an incredible range of scents, we also have a bespoke range especially for Christmas.

[www.quinnellcandlecompany.com](http://www.quinnellcandlecompany.com)



## RICHARD MEYRICK GUITARS

*Build Your Own guitar!*

Amazing step by step courses in Abergavenny with the incredible luthier (guitar maker) Richard Meyrick plus Handmade acoustic guitars built to order. Stringed instrument repairs, guitar setups, refrets, neck breaks, new nuts and saddles.

Sessions cost £36 for two hours with specialist tools and equipment provided. Note that courses are run over several months.

Materials are extra and guidance can be given when choosing tonewoods.

[www.richardmeyrickguitars.co.uk](http://www.richardmeyrickguitars.co.uk)

## OCTO-BASSEY

by Lee Ingram

An Art Exhibition with Pop Memorabilia  
in Celebration of Dame Shirley's  
Milestone Birthday



Norwegian Church Arts Centre  
Cardiff Bay  
Open Daily · Admission Free



## GLASS BY DESIGN

1 Station Approach, Penarth, CF64 3EE

Tel: 02920 705 317

Email: [sales@glassbydesign.co.uk](mailto:sales@glassbydesign.co.uk)

[www.glassbydesign.co.uk](http://www.glassbydesign.co.uk)

Glass by Design is a unique shop in the beautiful Penarth. Opened in May, it specialises in bespoke glass art by Angelina Hall & Cathy O'Doherty. Most is made on-site so you can see work in action. There is a progressive teaching programme for stained or fused glass techniques. Basic tools & sheet glass available.

It also showcases beautiful work by Welsh makers in the mediums of ceramic, metal, wire, slate, paper, felt, stone & wood. Parking area right outside.

Open Tuesday – Saturday 10am-5pm



HOMEWARE | GIFTS | ACCESSORIES

ALL SOURCED FROM  
LOCAL DESIGNERS & MAKERS  
BASED WITHIN A 25 - MILE RADIUS  
OF THE STORE

NO. 32 KINGSWAY CENTRE, NEWPORT  
[WWW.CRAFTED25.CO.UK](http://WWW.CRAFTED25.CO.UK)  
@CRAFTED\_25

## CREATIVE GIFTS AT CHRISTMAS

“This Christmas, give a  
handcrafted gift, which  
has been made with love.

Give the gift of a  
creative class or  
give someone you love a gift  
from a true craftsman,  
a bespoke gift,  
which can't be replicated,  
totally one-off.

Or why not treat yourself this  
Christmas?!”



## Christmas at CRiC

16 Nov - 17 Jan 2017



Painting by Tim Rossiter



DAVID ENGLAND



CHRISTINE GITTINS (CERAMICS)  
RACHEL CADMAN (LAMP)



DAVID ENGLAND



PATRICIA KELLY

## Christmas at CRiC

The staff and volunteers at CRiC are feeling particularly festive in Crickhowell. Recently receiving both a Powys Business Award and a Brecon Beacons Tourism Award, has been a highlight of CRiC's tenth anniversary celebrations and a much appreciated reward for great teamwork. The Centre's seasonal offering is a wonderful end to the year's activities.

Visitors are assured of a warm welcome whether they are enjoying a coffee, browsing the selection of books, maps, guides or are exploring the range of local, Welsh and handcrafted gifts and tasty temptations. The results of the community group Christmas tree decorating competition introduced last year, adds much enjoyment to a visit.

The oriel CRiC gallery prides itself on showcasing creative excellence at its best and has not disappointed with both its winter exhibitions. The "Christmas at CRiC" exhibition brings together many gallery favourites with a variety of ceramics, decorations, sculpture, jewelry, paintings and prints. The new exhibition space the "CRiC Studio" has embraced the season with an exhibition entitled "Gifts Galore" guaranteed to raise a smile with unique handmade items.

Centre manager, Jan Morgan said,  
"Crickhowell is a great destination during the festive season with something for everyone on offer. We look forward to welcoming both local residents and visitors to the area."

[www.visitcrickhowell.co.uk](http://www.visitcrickhowell.co.uk)  
[gallery@visitcrickhowell.co.uk](mailto:gallery@visitcrickhowell.co.uk)

**"Gifts Galore" at the Studio**

28 Nov - 24 December 2016

**Tel: 01873 813667**

[www.visitcrickhowell.co.uk](http://www.visitcrickhowell.co.uk)



## Q & A: NEON ARTIST 'COURTY'



# NEON ARTIST COURTY

**When was the first time you knew neon and neon art was your calling?**

I can define the moment quite easily to be honest, it was the year I first started in the neon industry (which was 1987) and I came across a book titled 'NEON LOVERS GLOW IN THE DARK' by Lili Lakich. This book was indeed the defining moment for me because it was then I realized that neon could be used as a medium for art and not just as an advertising tool.

**Your reputation internationally leads to lots of work/collectors that you keep classified. Who has been the most interesting celebrity you have met through your artwork?**

I like the word 'classified' it makes me sound like some sort of 'art-secret agent'....lol! No joking aside it's just about being discreet and respecting people's privacy really, it's as simple as that. I would say that meeting one of my musical heroes 'Bryan Ferry' at the beginning of this year was the most interesting celebrity I have met through my art. I was invited down to meet Bryan (who is a huge art lover and indeed an avid art collector) at his London based studio.

**Your neon works are known for many things, one of which is their ambitious nature. What is the most difficult project you have worked on?**

I'm not sure I could answer that with one particular project as different projects create various difficulties to overcome. In terms of difficulty of glassblowing, it would have to be a 12ft (ceiling hung) spiral sculpture I made from 20mm diameter pink neon and stainless steel for the London home of 'The Sainsbury Family'. In terms of sheer size it would be me being part of the 3 man neon team (headed by the late Chris Bracey) that worked for 10 months neon glassblowing in extremely hot temperatures on location in the Dominican Republic to create over 80 neon signs for the film set of 'Havana' starring Robert Redford.

**If you could let the public know one thing about neon, what would it be?**

Very simply that it is a fragile handmade item that's not produced by a machine and I strongly believe that it's a true art form within itself in how it's made. I'm very passionate about it (have you noticed...lol!) It utilizes Art, craft, chemistry, physics, noble gases, electricity and engineering....all merged together in fragile glass tubes, it's a beautiful thing.

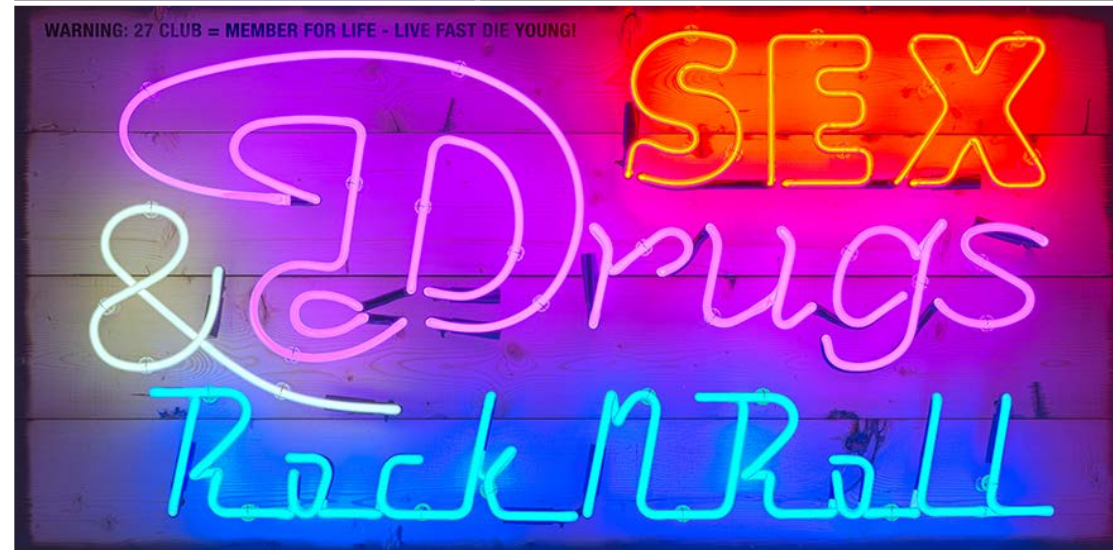
**Having achieved so much over a long career, what would be your biggest ambitions over the coming years & are you currently working on a new collection?**

My main focus at present is to make my art available at all levels financially. By its very nature of being handmade from costly materials my Neon Originals are very expensive to buy and are many thousands of pounds, they are also quite large in physical size too often requiring big premises for displaying them. So I am constantly developing my neon art adaptations using 'glow in the dark' inks and diamond dust crystals on my hand pulled screen prints. I am also constantly refining the wonderful ways in how my neon art is being digitally captured (just like a master painting is done) then computer enhanced and beautifully reproduced as a framed print format which are available to purchase at a starting cost of only a few hundred pounds. Yes I am working on a new collection at the moment....it's called 'The LIFE series' by COURTY. They are going to be small framed neon art prints that I am producing the same physical size as a vinyl record album cover as they all resemble a record sleeve type design. The concept of the collection pays homage to stars that have passed on.

E: [info@wishboneart.co.uk](mailto:info@wishboneart.co.uk)

T: +44 1245 350523

[www.wishboneart.co.uk](http://www.wishboneart.co.uk)



Dunroamin Original Neon  
Princefuckincharming (Glow in the dark screen print with hand embellished diamond dusted glass)  
Limited Edition of 25 & 5 Artist Proofs  
27 Club - Limited Edition of 25 & 5 Artist Proofs  
Cinderfuckinella (Glow in the dark screen print with hand embellished diamond dusted glass)  
Limited Edition of 25 & 5 Artist Proofs



# GREAT BRITISH ARTISTS



## ABSTRACT EXPRESSIONIST: SIMON SLATER

[www.Artfinder.com/SimonSlater](http://www.Artfinder.com/SimonSlater)

[www.saatchiart.com/ssartwork](http://www.saatchiart.com/ssartwork)

[www.artgallery.co.uk/SimonSlater](http://www.artgallery.co.uk/SimonSlater)

"A Spontaneous Explosion of Abstract Expressionism mixed with Experimental subconscious creation. My Art is inspired by the very Essence of life, personal experiences, my adventures and the wonderful people I've met along the way. I Aim to Capture the colours, energy and positivity the world has to offer in my Artwork. Always Be A True Human, Respect Each Other, Strive for Peace!"

Regularly Exhibiting in London, Glasgow, Liverpool and Oxford.

## STEAMPUNK ARTIST: DOUG SPELLACEY

Email: [dougspellacey@yahoo.com](mailto:dougspellacey@yahoo.com)

Tel: 07703 965433

[www.myriaddesigns.co.uk](http://www.myriaddesigns.co.uk)

[www.artfinder.com/doug-spellacey](http://www.artfinder.com/doug-spellacey)

A trained ceramicist, Doug Spellacey creates innovative sculptures, which capture the imagination. With intricate detail, each sculpture is created using a variety of materials such as vintage camera lenses, brass handles, wood, clay and fabric. As well as many different techniques such as the molding and firing of the clay and welding of metals. Each piece has a theme and story in mind such as 'Queen of Hearts' shown here, inspired by Alice in Wonderlands character. To purchase Doug's work simply visit his artfinder page or his website.



## METAL SCULPTOR: LYNN WALTERS

[www.lynnwalterssculptures.co.uk](http://www.lynnwalterssculptures.co.uk)

Tel: 01656 725642

Email: [lynnalana@fsmail.net](mailto:lynnalana@fsmail.net)

Facebook: @ Lynn Walters

Creating bespoke metal sculptures, which capture the heart Lynn Walters' metal creations drive the imagination and provide a totally unique gift for any occasion. Derived from cherished memories for some, such as their journey from the first 'I love you' to their very special wedding day, Lynn's sculptures are a truly memorable way to let those memories live on through art. To discuss a particular commission, Lynn can be contacted either by telephone or email.



sky ARTS

## Landscape Artist OF THE YEAR 2016

### New Radnor artist competes in semi-final of Sky Arts' Landscape Artist of the Year

New Radnor artist Howard Weaver is one of just six professional artists through to the semi-final of Sky Arts' Landscape Artist of the Year, which airs next Tues, November 22 on Sky Arts at 8pm.

Howard is challenged to create a piece of art depicting the iconic seafront of Margate in Kent – also home to Turner Contemporary gallery. If Howard is successful he will go on to take part in the final that took place on Loch Lomond earlier this year, when three finalists created art featuring the ruins of Uquhart Castle, and due to be screened on November 29th.

This is the second series of the show, which is produced by London and Glasgow-based independent production company Storyvault Films. "Landscapes" first aired last year following the enormous success of Sky's Portrait Artist of the Year (PAOTY), also from Storyvault Films, that has captured the public's imagination since its launch in 2013. Last year's LAOTY was the best-performing, non-scripted series of all time and second-biggest series ever for Sky Arts, with viewing figures growing over the course of the series.

Both "Landscapes" and "Portraits" have been presented from their launch by TV personality and comedian Frank Skinner, alongside presenter and journalist Joan Bakewell - a leading figure in the arts for nearly six decades. The judges are artist Tai Shan Schierenberg and independent curators Kate Bryan and Kathleen Soriano. The show not only highlights the tremendous artistic talent from every corner of Britain and Ireland, but also how the beautiful British countryside has inspired past and present generations of artists.

STORYVAULT FILMS

Hundreds of entries were received for the 2016 competition, giving the judges the difficult task of whittling them down to 48 artists who went on to take part in six heats over the summer at three National Trust locations: Scotney Castle, Kent; Wray Castle, Lake Windermere and Stowe in Buckinghamshire. Each heat was also open to a further 50 "wildcard" artists who were invited to compete for a potential slot in the semi-final.

The winning artist will receive a £10,000 commission to interpret Petworth House in West Sussex for the National Trust's national art collection and £500 to spend on CassArt materials. Storyvault Films will produce a further programme featuring the development of this final commissioned work, due to be aired on Tues, December 6, also at 8pm.

For more details about Sky Landscape Artist of the Year, information about artists taking part and stills from the series contact: Kerry Milliken at EyePR ([Kerry@eyepr.co.uk](mailto:Kerry@eyepr.co.uk)) 07799 714006; Jemma Wisdom ([Jemma@eyepr.co.uk](mailto:Jemma@eyepr.co.uk)) 07400 849988 and Lisa Moore ([lisa@eyepr.co.uk](mailto:lisa@eyepr.co.uk)) 07540142354

Storyvault Films is a genuinely independent production company which brings together a group of highly experienced and award-winning TV producers, directors and production managers. Between us we have delivered the widest possible range of factual and entertainment programmes for all major broadcasters and the best of the digital channels. Members of the Storyvault team has been responsible for productions as diverse as "Grumpy Old Men" and "Three Men in a Boat" at one extreme, to the BAFTA award-winning "Twins of the Twin Towers" at the other. As well as producing Landscape Artists of the Year and Portrait Artist of the Year for Sky Arts, our current productions include major documentaries and features for the BBC, ITV and Channel 4.



# GREAT BRITISH ARTISTS



## PORTRAIT ARTIST: DAVID MASLEN

Email [davemazann@yahoo.com](mailto:davemazann@yahoo.com)

[www.artmaz.co.uk](http://www.artmaz.co.uk)

Tel: 07952 176566

David Maslen is a self-taught portrait artist working with watercolors, inks, and pencils, inspired by pop art and comic book art he is currently working on various commissions.

"When I paint a portrait I'm always looking to capture an expression or emotion that the viewer can relate to hoping that the image draws them in to take a closer look"

## CERAMICIST: JULIE BRUNSKILL

Contact: [julie@juliebrunskill.co.uk](mailto:julie@juliebrunskill.co.uk)

Website: [www.juliebrunskill.com](http://www.juliebrunskill.com)

"I make slab-built ceramics using a mixture of clay bodies and oxides. My work explores climate change, time, memory, place - particularly edgelands, those areas where the urban/industrial overlap the rural/coastal.

The work incorporates found materials, both natural and man-made, often layered and imprinted onto the clay as the slabs are rolled out.

Currently my work can be seen in Mission Gallery, Swansea and Kunsthuis Gallery, Crayke near York."

## SCULPTOR: NAOMI BUNKER

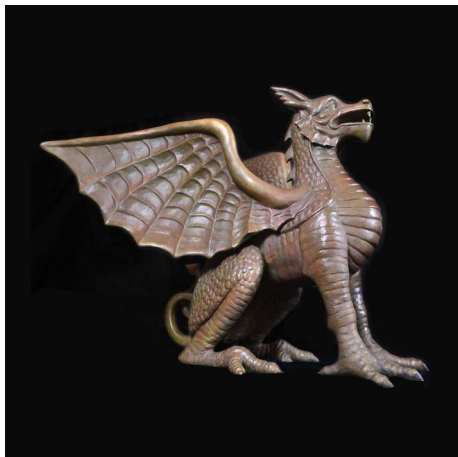
Email: [naomibunker@btinternet.com](mailto:naomibunker@btinternet.com)

Tel: 01792 842069

[www.naomibunkerartist.co.uk](http://www.naomibunkerartist.co.uk)

Facebook: @ Naomi-Bunker

Naomi has worked as a sculptor for over 20 years using the medium of clay to create her sculptures which are then cast into plaster or bronze. Her passionate approach to her work combined with her technical skills produces gentle, but subtly powerful sculptures which express the essence of the subject. Naomi has a range of wildlife and figurative limited editions bronzes on her website and is open to commissions.



# GREAT BRITISH ARTISTS



## CERAMICIST: HILARY COOLE

Tel: 07851 313275

Email: [hilarycoole@btconnect.com](mailto:hilarycoole@btconnect.com)

[www.hilarycooleceramics.wordpress.com](http://www.hilarycooleceramics.wordpress.com)

Facebook: Hilary Coole Ceramics

Hilary produces vessels and functional ware by applying slips, paper resist and graffiti onto the clay surface. "My intention is to evoke the fun, emotion and utopian aims of the 1950s by producing colourful, sculptural, contemporary interpretations of an influential era in my life. My thematic focus is specifically inspired by my mother's clothing that featured vibrant 1950s patterns which are captured in my work from memories of my mother and old family photographs." Hilary's work is exhibited across Wales at Kooywood Gallery, King Street Gallery, Mimosa Gallery and Erwood Station Gallery.

## PRINTMAKER: TONIA GUNSTONE

Email: [tonia.gunstone@btinternet.com](mailto:tonia.gunstone@btinternet.com)

[www.madeinbradley.co.uk](http://www.madeinbradley.co.uk)

Tonia Gunstone is a largely self-taught printmaker living and working in a small village on the Wiltshire, Somerset and Dorset borders. Her work is inspired by nature and she has a particular interest in lino cutting, collagraphy and mono printing techniques.

"I love the variety of patterns, colours and hues found in nature. It is an endless source of interest and one, which translates well in lino cutting, allowing for an exploration of light and shade, texture and colour and the creation of positive and negative images."



## PLEIN AIR LANDSCAPE PAINTER: LOUISE COLLIS

[www.louisecollis.com](http://www.louisecollis.com)

Email: [louisecollis@gmail.com](mailto:louisecollis@gmail.com)

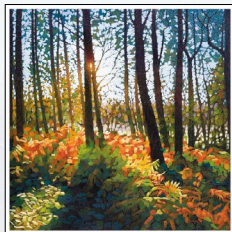
Tel: 07949 187426

'Louise Collis is a Plein Air landscape painter setting up her oil paints outside whatever the weather, capturing the vibrant colours of the landscape. She travels widely but is never disappointed with the fantastic views in Wales.

Her studio in Abergavenny is open to public most Friday and Saturdays (please check if making a special journey) and her work shown in many galleries – please check her website for details.





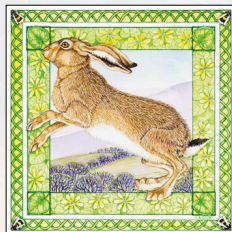


## Paul Burgess

*"Hats off yet again to I-Pixel - I had to get some prints done but Craig was so busy he couldn't see me until 5pm, which was obviously when he should have been going home. He spent over one and a half hours going through everything with a fine tooth comb and wouldn't stop until it was all perfect. It's a real pleasure to work with someone who is so conscientious about what they do and reassuring that my work is in such professional hands."*

## Tracey-Anne Sitch

*"I've been going to I-Pixel since 2007 and will continue to take my watercolours for capture because they always deliver - fast, efficient, friendly service and beautiful prints, which I'm hard pressed to tell apart from my originals"*

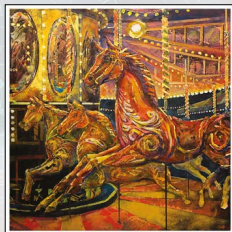


## Lee Wright

*"Since using I-Pixel to produce fine art reproductions of my work I have been able to reach a wider audience, thus dramatically increasing my profile and the revenues of my art business. I have been incredibly impressed at the skill and determination of Craig in ensuring that the reproductions of my art always look as good, and often better, than the originals!"*

## David Day

*"I have used I-Pixel for many years. They have always been extremely helpful and have never let me down on urgent jobs. They are prepared to work closely with the artist, and the quality of the prints are incredible. My customers have regularly commented to me on how amazed they are with the printed versions of my work."*

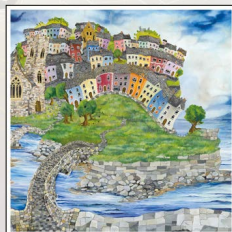


## Goff Danter

*"I-Pixel have made a major contribution to the development of my reputation as a professional artist. Their commitment to providing the best possible service by understanding the needs of their customers has enabled me to reach a much larger audience, sooner than expected."*

## Jeremy Thomas

*"I-Pixel have been reproducing my work for many years and have helped me enormously. They have an attention to detail that is second to none, working tirelessly to ensure that the subtleties in colour are captured perfectly and the printed image is beautifully crisp and clear. They are always prompt and professional, but above all else, they are thoroughly nice guys. I'm always impressed by I-Pixel... thanks for all the hard work."*



*For over 10 years I-Pixel have been fortunate enough to have worked with a diverse range of both established and fledgling artists. Above you can see some of the testimonials given to us by just a small selection of them. At I-Pixel we specialise in the capture and reproduction of fine art, producing limited or open edition prints. Using state of the art printers, we can produce stunning reproductions across a range of media.*