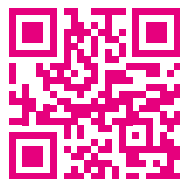


# ART SHARE LOVE

Wales & Borders



SEPTEMBER 2017  
FREE ARTS MAGAZINE  
ISSUE 50



50 UNFORGETTABLE ARTISTS FROM 50 EDITIONS OF ART SHARE LOVE  
NEW & EMERGING ARTISTS  
GALLERIES  
ART FESTIVALS  
OPEN STUDIO EVENTS  
AND SO MUCH MORE...

SEPTEMBER 2017

FEATURES:

50 UNFORGETTABLE ARTISTS  
NEW & EMERGING ARTISTS  
GREAT BRITISH ARTISTS

EDITORIAL:

ORIEL CRIC GALLERY  
MARTIN ROBERT REED  
HEREFORD ART WEEK  
PENALLT ART FESTIVAL  
DOUG SPELLACEY  
MATTHEW DARWIN  
ROB LECKEY ART  
CHAPEL COTTAGE STUDIO  
GREENSPACE GALLERY  
ORIEL MIMOSA  
IAP FINE ART  
PAUL BURGESS ART  
MARIA PIERIDES ART  
NINA LAZAROU WIREWORKS  
RACHEL WRIGHT TEXTILES  
RICHARD BLACKLAW-JONES  
BARRY ARNOLD ART  
KIM & MAGGIE DAVIS



ISSUE 50

Advertising & Editorial: Ingrid Nicholas

Email: [ingrid@artsharelove.com](mailto:ingrid@artsharelove.com)

Telephone: 07530875629

Get social with Facebook: @ARTSHARELOVEWALES

Get social with Twitter: @IngridASLW

[www.artsharelove.com](http://www.artsharelove.com)

Disclaimer: Reasonable care has been taken to ensure that the information contained in this guide in print and on the website are as up-to-date and accurate as possible, as of the time of publication, but no responsibility can be taken by ART SHARE LOVE Magazine for any errors or omissions contained herein. Furthermore, responsibility for any losses, damages or distress resulting from adherence to any information made available through this guide/website is not the responsibility of ART SHARE LOVE Magazine. No responsibility will be accepted for any errors or omissions.

# A Passion For Nature



An exhibition of watercolour paintings by natural history artist

## Tracey-Anne Sitch

14th October - 19th November 2017

(Preview night 13th October)

At Taurus Crafts

The Old Park

Forest of Dean

Aylburton, Lydney

GL15 6BU

Open daily 10am - 5:30pm. Free Entry, free parking.

[www.traceyannesitch.co.uk](http://www.traceyannesitch.co.uk)

Facebook: Tracey-Anne Sitch Artist



# Overcoming Dyslexia with Sculpture...

A unique talent, true gentleman and marvellous sculptor, Doug Spellacey has been on the pages of ART SHARE LOVE since its early beginnings. With dyslexia at the forefront of his life, Doug's creative confidence over the years has gone from strength to strength. Having developed his sculpting and silversmithing skills during his time in further education, Doug is now a professional sculptor. Despite his own personal struggles with dyslexia, Doug channels this frustration into creativity.

Doug Says "I'm really thankful to have featured in so many editions of ART SHARE LOVE Magazine, not only has it helped promote my work, exhibitions and raise awareness of Disability Arts Cymru, but it has given me a professional and creative input in promoting my work, with genuine support, belief and confidence in my art."

Doug's creative talent allows him to make his multi-media sculptures with stunning detail. Each has a story behind it and intricacies far beyond the naked eye. Sculpted by hand, with clay, they are then kiln fired, to create a sturdy ceramic base.

From here, depending on which particular piece it is, other elements are moulded and fused to develop a character, whether it be 'Dr. Watson' from Sherlock Holmes or 'The Queen of Hearts' from Alice in Wonderland, each is based on a theme but develops into so much more, uniquely created by Doug. Sustainable with the use of reclaimed items and utterly mesmerising. True collector's items.



To stay up to date with future exhibitions, visit Doug's website or social media sites. Doug's work is also available to purchase through his website and 'artfinder'. [www.myriaddesigns.co.uk](http://www.myriaddesigns.co.uk)



[www.myriaddesigns.co.uk](http://www.myriaddesigns.co.uk)



# ARTIST MATTHEW DARWIN



These are just two images from the wonderful artist and Illustrator, Matthew Darwin. He works from his studio in Hayle, Cornwall, where he is based. As an extremely sensitive character, Matthew is both unique and extravagant with his art. With an in depth passion for wildlife and the landscape, he draws most of his inspiration from this. On coming within 'The Top Ten Wildlife Artists' within the UK in April's Art Share Love, he was absolutely over the moon and extremely excited to have been one of the few selected again to appear in the September's Edition of The Magazine. Matthew said, "I would be absolutely honoured

and very excited to be part of the magazine again". As it's ART SHARE LOVE's 50th anniversary, Matthew wanted to do something quite special and has selected two of his latest watercolours, which are fascinating and very vibrant. Matthew likes to make his images jump with colour and versatility. He also said, "When I paint, whatever the subject matter, I want the image to look as creative and colourful and as dynamic as possible".

Matthew is currently Exhibiting at The Blue Mist Gallery, St. Ives Cornwall. All Matthew's Work is Purchasable and Original.

**CURRENT EXHIBITION: Blue Mist Gallery, St. Ives, Cornwall**  
**Purchase Matthew's work via: [www.riseart.com](http://www.riseart.com)**

# Rob Leckey Art

*Acrylic, Collage & Mixed Media*



With his first book published in 2016 'Painting Without Brushes', Rob Leckey's mixed media art is both striking and intricate. His unique approach and style is taught at the many workshops he is invited to lead. People attending get to apply collage and then apply acrylic paint using rollers, shaped pieces of wood and old plastic store/bankers cards to produce their own works of art.

"Like many artists my inspiration comes from the subject matter. Experimenting with colour, media and techniques is very rewarding. Realism is way down the list of my intentions. By the very nature of how I apply the collage, paint and inks I can never predict the outcome. Along the way many accidents happen, interesting colours and unique shapes emerge."

To purchase Rob Leckey's work or new book, simply visit his website or contact him using the following details: Email: [rob.leckey@icloud.com](mailto:rob.leckey@icloud.com) or Telephone: 01743 872297

[www.robleckeyart.com](http://www.robleckeyart.com)





# 50 UNFORGETTABLE ARTISTS

from 50 editions of ART SHARE LOVE!

*Since first launching 'ART SHARE LOVE' back in 2013, the talent we have seen over the years has been extraordinary. Watercolours, acrylics, oils, felt, clay, glass, metal, wire, wax, textiles, mixed media, so much creative talent in so many different styles and forms. To celebrate some of the very best, from way back to present day, we've invited '50 UNFORGETTABLE ARTISTS FROM 50 EDITIONS OF ART SHARE LOVE' to return to our pages once again.*



**SARAH GOODGAME**

**Tel: 07581562666**

**Facebook: @LittleBirdWales**

**Email: goodgame@uwclub.net**

Capturing spectacular Welsh landscapes at their very best, textile artist Sarah Goodgame uses fibre and stitch to make colourful pictures with incredible texture and depth.

Sarah's work can be found in Mockingbird of Abergavenny, Quillies of Rhayader, Hummingbird coffee shop in Llanover, Elephants and Bananas in Tenby and Talgarth Mill craft shop.



**LYNN WALTERS**

**Email: lynnalana@icloud.com**

**Tel: 01656 856906**

**Facebook: @Lynn Walters**

**www.lynnwalterssculptures.co.uk**

With incredible vision and character, Lynn Walters offers bespoke commissions to those wanting to capture their fondest of memories, whether it be a place they once visited or their journey in finding love from the first meeting place to their walk down the isle.

These remarkable metal sculptures are a vibrant and captivating work of art suitable for any home or office space. Simply get in touch with Lynn to discuss your requirements.



**DORIAN SPENCER DAVIES**

**www.dorianspencerdaviesart.com**

2017 has been a very busy but productive year for Dorian Spencer Davies. Three solo shows starting with The Taliesin Arts Centre, Swansea then Art matters, Tenby and also Oriel Q, Narberth in August. There has also been The Snowdog trail for Ty Hafan which launches in Cardiff on 16th September. Dorian has painted and produced a 'Dragon' Snowdog for the art trail which is fun and funky and distinctively Welsh. He also has a new range of prints available on his revamped website.

**IMAGE: Summer Harbour, Tenby, 2017**



**JUDITH DONAGHY**

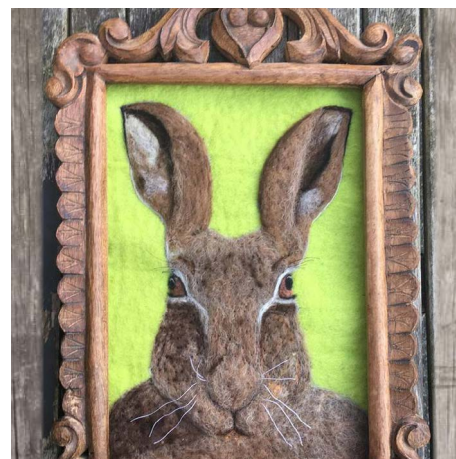
**www.judithdonaghy.com**

**Tel: 07886 338285**

**Email: judithdonaghy2@gmail.com**

Bold, bright and utterly captivating, the paintings of the fabulously talented Judith Donaghy, can be seen throughout Cheshire and further afield such as Artifex, Sutton Coldfield and Conwy. Her incredible collection is also available via the website and all stocking galleries are listed here too. Judith has a palette knife painting class each Tuesday in Bramhall Cheshire and regularly provides demonstrations at art clubs and in Stockport Art Gallery. The next workshop at Stockport art gallery is Sunday 29th October. Judith will be taking part in the Autumn Open Studio at the Vernon Mill, Stockport.

**IMAGE: Holy Island, Holyhead, 24x20 inches, Oil on canvas**



**EMMA BEVAN, FfolkYFfelt**

**www.ffolkYFfelt.com**

**emma@ffolkYFfelt.com**

In my felt-making, I explore my relationship with the environment, creating art whilst being hands-on, combining traditional skills with contemporary designs, and making stories as I work. I use many locally sourced wools; this creates a further link with the landscape, and the farmers who provide it. As a qualified tutor and artist, I love to teach as well as create, and often curate exhibitions and arts and crafts events, as well as running workshops.

**IMAGE: Stag of the stubble**

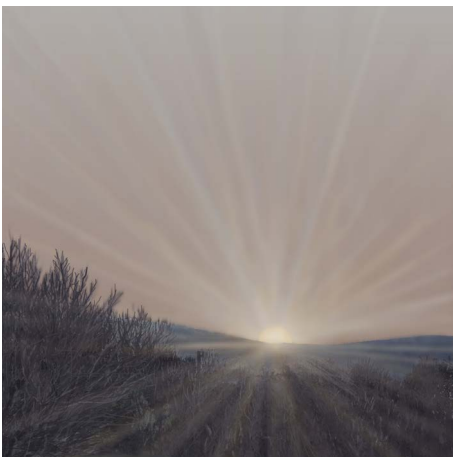




**KATE HEISS**  
[www.kateheiss.com](http://www.kateheiss.com)  
 Facebook: [Kateheiss.com](https://www.facebook.com/Kateheiss.com)  
 Twitter: @Kateheiss  
 Instagram: [kateheiss](https://www.instagram.com/kateheiss)  
 Pinterest: [Kate Heiss](https://www.pinterest.com/KateHeiss)

Kate Heiss is a printmaker creating limited edition screen prints and linocuts. Kate studied at the Royal College of Art graduating with an MA in Textile Design in 1997. She then worked as a Textile Designer across a wide range of fashion brands before setting up her own printmaking studio in 2011. Kate creates dynamic, vibrant, and illustrative prints inspired by her love of flowers and nature.

**IMAGE:** Cottage Garden



**DAVID PHILLIPS**  
[www.paintingsbydavidphillips.com](http://www.paintingsbydavidphillips.com)

A landscape of Dare Valley a former colliery site. Google "Dare Valley Country Park". You will find no mention of its history but there are adverts for free parking, a venue for weddings and camping. I am all for conservation and reclamation but not at the expense of history. Men and Women lived and died in this place and their lives and endeavours seem simply to have been dismissed as irrelevant. That's not right.

To buy prints your readers are welcome to visit my website.

**IMAGE:** "I remember a time when all of this wasn't just field and trees"



**FAUXIDERMY**  
[www.fauxidermy.co.uk](http://www.fauxidermy.co.uk)

Extraordinary, inspired and visionary are just a few words to describe the wonderful talent that is Helly Powell of 'Fauxidermy'. Helly creates Textile Taxidermy in the form of animal sculptures, trophy heads and commissions. Based in the Monmouthshire countryside with the Brecon Beacons National Park as her muse and the rich literary history of Welsh myth and folklore, these lifelike creations are nothing short of magical.

To discuss a commission or purchase an existing piece, contact Helly via her website.



**JOCELYN PROSSER**  
[www.jocelynprosser.co.uk](http://www.jocelynprosser.co.uk)

With influences from folk art and some of the greats, such as Frida Khlo and Paul Klee, Jocelyn Prosser's eye catching art is fabulously unique. The mixed-media techniques used, create depth and texture, though new Jocelyn's work has a distinctly ancient feel about it. Jocelyn's creations are both thought provoking and visionary. This distinct work is currently on sale at White Court Art, Brecon.

Visit Jocelyn's website, to see further collections.

**IMAGE:** 'And the rain butterfly soothes'

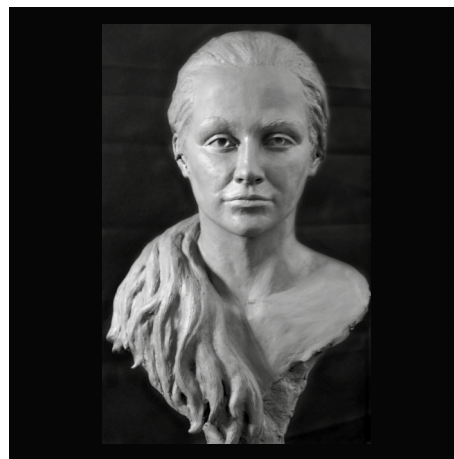


**LOUISE COLLIS**  
[www.louisecollis.com](http://www.louisecollis.com)  
 Email: [louisecollis@ymail.com](mailto:louisecollis@ymail.com)  
 Tel: 07949 187426

'Louise Collis is a Plein Air landscape painter setting up her oil paints outside whatever the weather, capturing the vibrant colours of the landscape. She travels widely but is never disappointed with the fantastic views in Wales.

She has a Solo exhibition at Y Galeri Caerphilly from 5th September 'Painting Your Wales' and has a studio in Abergavenny that is open to the public - please check her website for details.'

**IMAGE:** Moel-Siabod



**SCULPTOR: NAOMI BUNKER**  
 Email: [naomibunker@btinternet.com](mailto:naomibunker@btinternet.com)  
 Tel: 01792 842069  
[www.naomibunkerartist.co.uk](http://www.naomibunkerartist.co.uk)

Naomi has worked as a sculptor for over 20 years using the medium of clay to create her sculptures which are then cast into plaster or bronze. Her passionate approach to her work combined with her technical skills produces gentle, but subtly powerful sculptures which express the essence of the subject. Naomi has a range of wildlife and figurative limited editions bronzes on her website and is open to commissions.

**IMAGE:** 'Maya'





### TABITHA MARY

Email: [tabitha@tabithamary.co.uk](mailto:tabitha@tabithamary.co.uk)  
 Twitter: @tabithamaryuk Instagram: @tabithamaryuk  
 Facebook: @tabithamaryuk  
 Mobile: 07716304018  
[www.tabithamary.co.uk](http://www.tabithamary.co.uk)

Tabitha Mary breathes new life into the vintage travel poster. Her beautiful nod to the vintage railway posters of the 1930's teamed with a customer-led approach to subject matter and striking contemporary feel, makes her bright and bold prints the perfect addition to the modern home or workspace. Spanning popular tourist landmarks, holiday destinations, beaches, mountains and more Tabitha's work can be purchased directly on her website.

### STEVE MANNING

Email: [stevesprints@yahoo.co.uk](mailto:stevesprints@yahoo.co.uk)  
 Web: [www.stevemanningprints.co.uk](http://www.stevemanningprints.co.uk)  
 Facebook: [www.facebook.com/stevemanningprints](http://www.facebook.com/stevemanningprints)



Steve is a prize-winning Exeter-based printmaker producing prints inspired by patterns in the landscape, the enormity of billowing clouds, windswept trees, soaring birds and the ever-changing cycle of nature. Although favouring lino-cut he also works in drypoint, a technique which enables him to capture the moodiness of brooding skies. Steve's work has appeared in many exhibitions and can be found in a selection of galleries in the South West.

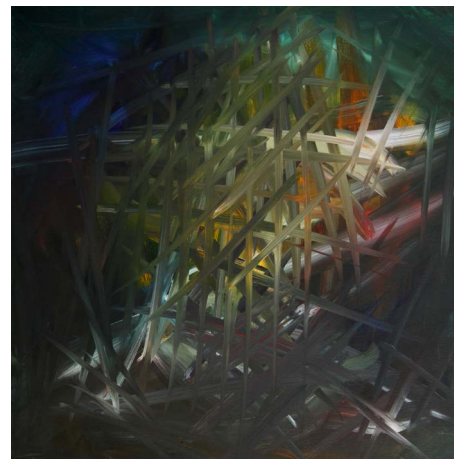
IMAGE: 'Murmuration II'

### BRONTË WOODRUFF

Marsh Cottage, Yatton HR6 9TP  
[bronte@woodruffsworld.co.uk](mailto:bronte@woodruffsworld.co.uk)  
 07972 138088 or 01568 770177

Brontë is a Marcher artist living at the foot of Croft Ambrey in North West Herefordshire with her lurcher, Finn. She is a keen walker and over the past 16 years has gained a familiarity with the landscape in all its seasons and weathers. Bypassing photorealism, she has developed her own shorthand in depicting the surroundings, sometimes peaceful, sometimes dramatic and wild, whether in watercolour, charcoal, acrylic or earth pigments, or mixed media with collage. This September, Brontë is hosting her 14th consecutive open studio for h-art, featuring recent landscapes and abstracts.

IMAGE: Connectivity



### DEX HANNON at Sopa Creativa Studios

Tel: 07735246562  
 Email: [dexhannon@hotmail.co.uk](mailto:dexhannon@hotmail.co.uk)  
[www.brokentoycompany.co.uk](http://www.brokentoycompany.co.uk)  
<https://yorkshire.art/artists/dex-hannon>  
<https://shop.lumiarts.co.uk/en/dex>

Dex Hannon's work explores, memory, duality and contrast through mixing of styles, techniques and bold colour choices. He attempts to cause a conversation or battle between foreground and background. Sometimes when the painting is completed, he will digitally reimagine the painting, or as he calls it, 'Digitally Remix' it. You can purchase or discover more about his work following the links above.

IMAGE: RAGE

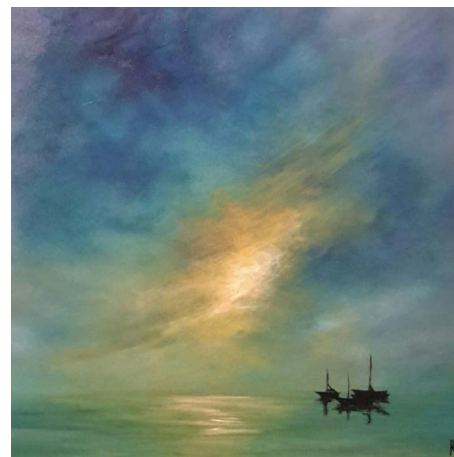
### RUTH SCOTT

Email: [contact@ruthscottart.com](mailto:contact@ruthscottart.com)  
[www.ruthscottart.com](http://www.ruthscottart.com)

Ruth is a Glasgow based artist, inspired by the land and seascapes of Scotland's West Coast. Mainly working in acrylics her recognisable dramatic skies are her trademark. Atmospheric and emotive translations are made in her use of colour.

Recent work incorporates silhouettes against abstract backdrops, taking commissions from photos. Currently introducing metallic and gold leaf to her work. Signed Limited Edition prints and cards available.

IMAGE: "Light Work"



### JACKIE WAGG

[www.jackiewagg.com](http://www.jackiewagg.com)  
 Email: [jackiewagg2@gmail.com](mailto:jackiewagg2@gmail.com)  
 Twitter: @JackieWagg  
 Facebook: @JackieWagg

Graduated London 1984. My paintings and printmaking are of townscapes and the coast of Britain. I have exhibited in the National Portrait Gallery, The Royal Academy, The Royal Festival Hall, The Whitechapel and the Williamson Art Gallery. I have had solo exhibitions at Salisbury Arts Centre, Stockport Art Gallery and Buxton Museum. My work is in the collection of The Victoria and Albert Museum and Stockport Council. Exhibiting at Blue Moon Gallery, Heswall, CH60 0AJ, Tel: 0151 3426657

IMAGE: 'Misty Day Whitby' Acrylic on canvas







**PAUL WOOLDRIDGE**  
[www.wooldridgewoodwork.com](http://www.wooldridgewoodwork.com)  
 Tel: 07964681878

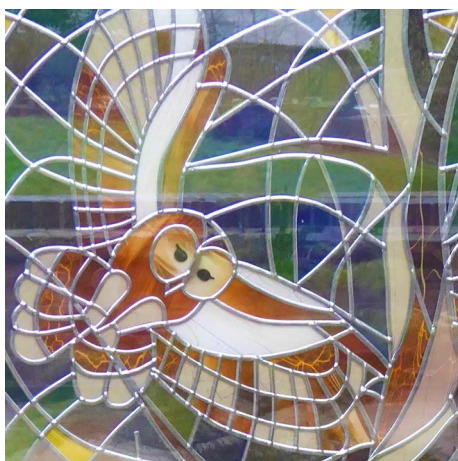
Creating hand-crafted, bespoke wooden furniture, the incredibly talented Paul Wooldridge, can provide a bold statement piece for any home or work space. Seen here is a commissioned table, created for a couple in Devon. Made from Victorian Oak lock gates once used in the Brecon and Monmouth Canal. It's beautiful jet black and purple tones are a result of the oak boards reacting with the metal linking rods (which hold the boards together). The results are truly beautiful and enhanced with a wax finish.

To discuss a commission with Paul, contact him via his website or call after 6:30pm.



**UNIQUE GLASS ART BY MICHELE**  
 T: 07733 360638  
 E: [micheleclayton1@yahoo.co.uk](mailto:micheleclayton1@yahoo.co.uk)  
 Twitter: @MichelleGlassArt  
[www.uniqueglassart.co.uk](http://www.uniqueglassart.co.uk)

'Volcano', this pot melt was created with scrap glass, using a bubble mould with many holes in it. After 15 hours it looks like the inside of a volcano and is about ¼" thick. The swirling pattern and vibrant orange/red detail give the piece focus. This was inspired by the volcanic island of Lanzarote. I have work with the Lace Guild at the International Festival of Glass, Stourbridge 25-28th August. 'Volcano' was entered into Warm Glass - Glass Prize and is displayed on their website. I also have 8 pieces on display at Timothy Hawkins Gallery, 14 Church Street, Hereford HR1 2LR, from late September.



**VIV WILKINS, Contemporary Stained Glass Artist**  
[www.vivwilkins-glassart.co.uk](http://www.vivwilkins-glassart.co.uk)  
 Tel: 01773 812 186  
 Email: [viv@vivwilkins-glassart.co.uk](mailto:viv@vivwilkins-glassart.co.uk)  
 Facebook: Viv Wilkins Glass Art

Viv loves to draw inspiration from the beauty and colours in nature and her contemporary designs, using bright colours on textured glass are vibrant and dynamic. From abstract to semi-realistic, framed or mounted and from small to really large panels, doors and windows – her work is beautifully hand crafted and very individual. Visit her website [vivwilkins-glassart.co.uk](http://vivwilkins-glassart.co.uk) for more examples.

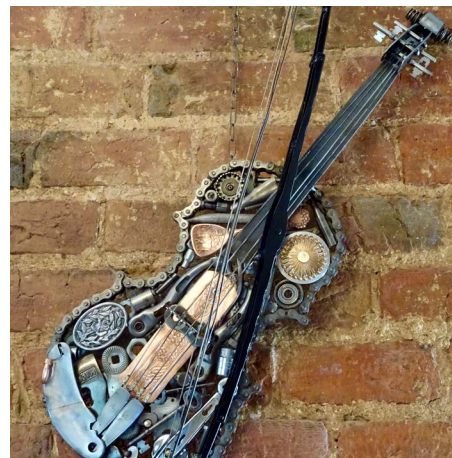
IMAGE: Tawny Owl (detail from a window commission)



**QUINNELL CANDLES**  
 T: 01291 672779  
 Twitter: @quinnellcandles  
[www.quinnellcandlecompany.com](http://www.quinnellcandlecompany.com)

A small family run business, we are based in the beautiful Welsh hills, near Usk, in an 18th century Welsh country house with the barn as a converted workshop. The candles we produce are each hand poured using 100% soya wax, unbleached natural wicks with essential and beautiful fragrance oils to keep the candles as environmentally friendly as we possibly can.

With an incredible range of scents, we also have a wide range of candles for all kinds of celebrations and seasonal events.



**PAUL THOMAS 'PAUL'S METAL CRAFTING'**  
[www.paulsmetalcrafting.com](http://www.paulsmetalcrafting.com)

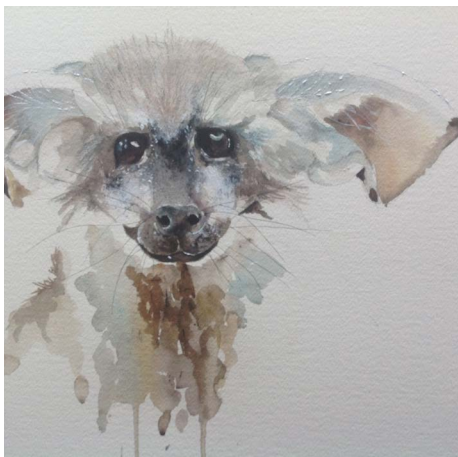
I'm Paul Thomas born and bred in Herefordshire. Once I had retired I looked for something to do with my creative mind and started to make some astonishing human powered vehicles made from old bicycles. It was while making these vehicles that I thought of using scrap metal to create art pieces. I design and create clocks, interior design sculpture and garden pieces. I am fascinated by the beauty, and indeed art, that can be found in finely engineered gears, bearings etc. that make up engines. In today's throw away society, I try to use 90% of my materials from scrap so that they have a very low carbon footprint. My work can be seen at The Trumpet Corner Gallery near Ledbury and at my studio - see my website for further details.



**JUDITH MARTIN-JONES GLASS DESIGNS**  
 Tel : 029 20 707 708  
 Email: [info@judithjonesglassdesigns.co.uk](mailto:info@judithjonesglassdesigns.co.uk)  
 Website: [www.Judithjonesglassdesigns.co.uk](http://www.Judithjonesglassdesigns.co.uk)  
 Facebook: Judith Martin-Jones Glass Designs

Flowers, the seaside and glass – these are indeed some of my favourite things! I'm lucky enough to have found a way of combining them by way of kiln-formed glass art which I make in my home studio in Penarth, specialising in coastal scenes and floral images. I am currently exhibiting in the HeArTh Gallery, Llandough Hospital and at Artisans' Corner, Penarth. I also welcome direct enquires via my website / telephone.





**JENNY TYLER**  
[www.jennytylerartist.com](http://www.jennytylerartist.com)  
 Email: [jenny@jennytylerartist.com](mailto:jenny@jennytylerartist.com)  
 Facebook: @Jenny Tyler Artist

Jenny Tyler is principally known for her characterful animal portraits, which are being represented at both the Secret Severn Art Trail in September, and the Cambridge Art Fair in November. Having completed a summer school at the Slade she has now also added humans to her range!

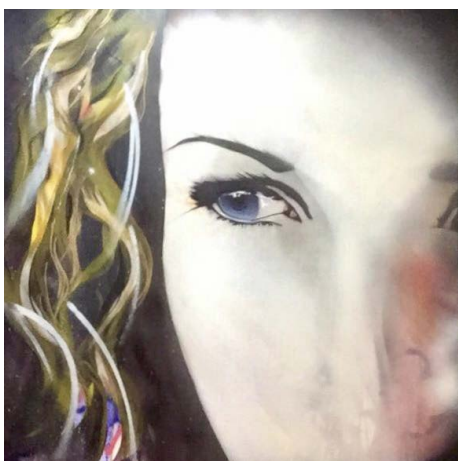
To purchase Jenny's beautiful work, or to discuss a commission, simply visit her website or email.



**KATE BELL**  
[www.katebellart.com](http://www.katebellart.com)  
[kate8bellart@gmail.com](mailto:kate8bellart@gmail.com)  
 Instagram : @katebellart  
 Facebook: @KateBellArt  
<https://vimeo.com/179568417>

Kate explores places where land and sea come together such as the meeting of the sea and cliff, wind and rock, air and water – a fascination with the edges of landscape. Her expressive mark making through both drawing and paint captures a sense of time and place, encouraging a continual dialogue between real and imagined geographies. She currently has a studio at Elysium Gallery, Orchard Street, Swansea.

IMAGE: 'Incoming Tide' oil/ charcoal on canvas 50cmx50cm



**JUSTIN CARROLL**  
[www.justincarrollart.com](http://www.justincarrollart.com)  
 Call: 07813 901043  
 Email: [jcarroll12@hotmail.com](mailto:jcarroll12@hotmail.com)  
 Facebook: @Justin Carroll Art

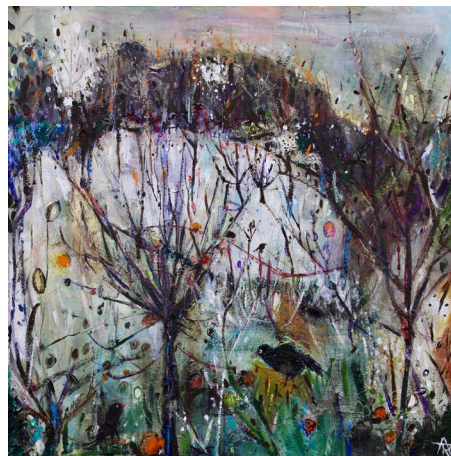
Contemporary modern art at its best, Justin Carroll has been on the pages of ART SHARE LOVE since its early years. With his own take on the traditional 'portrait' his eclectic work has a style all of its own. His work often has a brutal reality but its intriguing and honest. Creating incredible mixed-media art Justin has exhibited and sold work throughout the UK.

To purchase Justin's work, contact him via email or social media.



**JENNIFER ALSOP**  
 Email: [jennifer@jennysalsop.co.uk](mailto:jennifer@jennysalsop.co.uk)  
[www.artfinder.com](http://www.artfinder.com)  
[www.etsy.com](http://www.etsy.com)  
 Facebook: @Jennifer Alsop

With her portrait of Arnold Lowrey (seen left) the incredible Jennifer Alsop, has won the SAA's 'Artist of the Year 2017' award. Her winning piece will be exhibited at the NEC, Birmingham in November. This is Jennifer's 2nd win having won last year too, with 'Plight of the Bumble Bee'. As well as watercolour portraits, Jennifer captures beautiful floral scenes, nature and horse racing. To discuss purchasing her work, contact Jennifer via email, artfinder, etsy or Facebook.



**ANNA THOMAS**  
[anna@tomedi.com](mailto:anna@tomedi.com)  
[www.tomedi.com](http://www.tomedi.com)

Anna Thomas works in oil, acrylic and mixed media and creates paintings that are often playful and uplifting in spirit. They reflect her love of the natural world.

"I never know where inspiration for a painting will come from, but when some element of the landscape calls, its impact is remarkable and irresistible. I paint intuitively, and from the initial and simple marks laid down, a painting emerges embellished by memory and emotion."

Blackbirds and Windfalls, acrylic on canvas, 44 x 44 cm



**ELUNED GLYN**  
[www.elunedglyn.com](http://www.elunedglyn.com)  
 Email: [elunedglyn@hotmail.com](mailto:elunedglyn@hotmail.com)

The forms of 20th Century ceramics inspire my work. The modernist movement has been a point of reference, using their concept of well-designed faceted forms as inspiration. The marriage of form and function intrigue me, and the distortion of the domestic object which is familiar yet foreign in form. Existing fractured vessels are found in auctions and re-constructed; every piece is fired four times to complete the body of work.

To see Eluned's full collection and to purchase her work, simply visit her website.

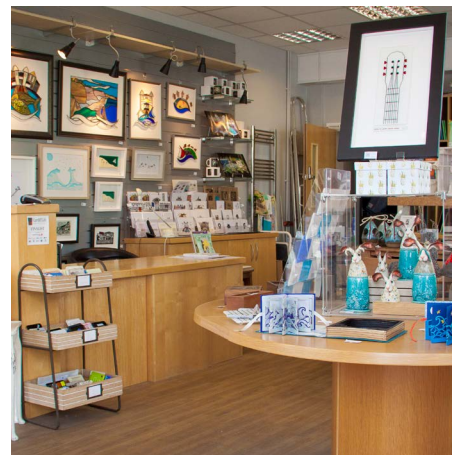




**RICHARD MEYRICK**  
[www.richardmeyrickguitars.co.uk](http://www.richardmeyrickguitars.co.uk)  
[info@richardmeyrickguitars.co.uk](mailto:info@richardmeyrickguitars.co.uk)  
 0777 9595 891

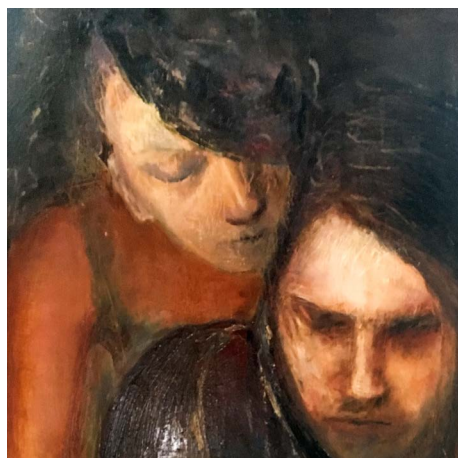
Richard Meyrick offers fine handmade acoustic guitars as well as providing the opportunity for you to learn the art of guitar making for yourself with his 'build your own guitar' courses. Sessions are £18 per hour, tools provided. Note that courses are run over several months. Materials are extra and guidance can be given when choosing tonewoods.

In addition to this Richard offers all aspects of stringed instrument repair.



**GLASS BY DESIGN**  
 1 Station Approach, Penarth, CF64 3EE  
 Telephone: 02920 705317  
 Email: [sales@glassbydesign.co.uk](mailto:sales@glassbydesign.co.uk)  
[www.glassbydesign.co.uk](http://www.glassbydesign.co.uk)

Glass By Design is a unique shop in the beautiful Penarth. Opened in May 2016, it specialises in bespoke glass art by Angelina Hall & Cathy O'Doherty. Most is made on-site so you can see the work in action. There is a progressive teaching programme for stained or fused glass techniques. Basic tools & sheet glass available. It also showcases beautiful work by Welsh makers in the mediums of ceramic, metal, wire, slate, paper, felt, stone & wood. Parking area right outside. Open Tuesday - Saturday 10am - 5pm



**BRENDA BULLOCK**  
[www.brendabullock.com](http://www.brendabullock.com)  
 Tel: 01597 86012 Email: [brendabullock7@gmail.com](mailto:brendabullock7@gmail.com)  
 Facebook@b.h.bullock / Twitter @brendabullockx/  
 LinkedIn/Vimeo/ Instagram/Pinterest

With a Master of Fine Art gained at the prestigious Aberystwyth University, the hugely talented Brenda Bullock is currently working on a new series of work 'Under the Skin'. Capturing aspects of people's lives, which reflect facets of the uncanny, Brenda's new works are deep and thoughtful. Brenda gives us a "glimpse into the human condition, its facets infinite, disconnected and often inharmonious. Notions of social isolation, the defunct-psyche". To discuss purchasing Brenda's work, contact direct or via saatchiart.com.

IMAGE: Skin Detail

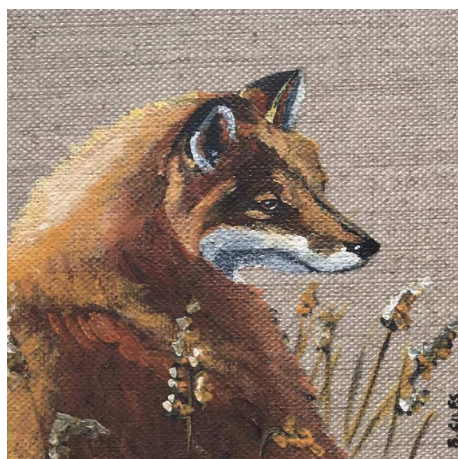


**RHIAN WYN HARRISON**  
[www.rhianwynharrison.com](http://www.rhianwynharrison.com)  
 Facebook: @rhianwynharrisonillustrations  
 Email: [rhian@rhianwynharrison.com](mailto:rhian@rhianwynharrison.com)

Rhian creates quirky and colourful mixed media illustrations from her South Devon studio.

She repurposes old books and maps as both the backgrounds and the inspiration for her work. Her challenge is always to find an unexpected interpretation between word and image. Drawn by hand, then coloured with ink, gouache paint and pastel, Rhian uses traditional techniques and injects humour or wit wherever possible! Originals, prints and commissions available.

Use the code **ASL50** for 10% discount on your order.



**BETH GILES**  
[www.gilesgallery.net](http://www.gilesgallery.net)  
 Telephone: 01443 228 638  
 Email: [bethgilesgallery@yahoo.co.uk](mailto:bethgilesgallery@yahoo.co.uk)  
 Facebook/Twitter/Instagram: @BETHGILESARTIST

Inspired by natural history, home grown and domestic fauna, Beth Giles' work captures the spirit of nature Perfectly. She has been a commissioned artist and illustrator for the last 10 years, having completed 100's of individual orders, as well as having illustrated many children's books, including 'Foxgloves' by E. King, and a children's tale about the first Royal Corgi written by HRH biographer Brian Howe. With work available at her own gallery, Giles Gallery, Pontyclun, Beth is also exhibiting at the Victoria Fern Gallery, Rhiwbina, for a month starting from the 15th September.



**JO WEST ART**  
[www.jowestart.co.uk](http://www.jowestart.co.uk)

Based on the South Coast of Devon, Jo is the first UK artist to produce colour changing resin artwork, selling professionally since 2016. The practice is self-taught and Jo primarily takes her influence from her rural upbringing, exploring themes around nature.

"I always want to help people feel good about themselves, we are surrounded by illness and chaos in our lives and sometimes just stopping and breathing in nature's beauty can change how we are feeling".

IMAGE: Sparkling Spring





### GARRY JONES

Facebook: @garryceramic

Telephone: 07886 412987

Email: garryjones1962@outlook.com

For a home and garden filled with character, look no further than Garry Jones' Ceramics. Capturing a quirky version of nature's best-loved animals, Garry's work is nothing short of fabulous. Filled with personality and a character all of their own, every piece is completely unique. From farmyard chickens, sheep and pigs to your family pet dog. Every one is brilliant and can work either indoors or out. Each ceramic sculpture makes you smile and inevitably has a humorous background story. Contact Garry direct to discuss purchasing his work or commissions. Garry is also offering sculpting classes from September onwards. Book early to avoid disappointment.



### CHRIS WOOD

www.woodartworks.co.uk

Tel: 0778 8643879

Email: chris@woodartworks.co.uk

Caerleon based Chris Wood is the master craftsman of incredible wooden structures and in August 2017 came 2nd in the English Open Chainsaw Carving competition. Creating sculpture parks with life sized lions, benches, lifelike creatures and even huge scaled people. There is no end to his talent or capabilities. Chris' highly diverse work includes chainsaw sculpture, traditional wood carving, green wood working, steel sculpture & fabrication, silver smithing, prototype design and manufacture. Commissions are welcomed from businesses, local authorities and individuals. To discuss your requirements either call or email.

### BARRY LEWIS

Email: barrythesculptor@hotmail.com

Facebook: @Barry Lewis sculptures

Brilliant, quirky, innovative and resourceful, Barry Lewis sees art in everything. Creating large and small metal sculptures, Barry's work ranges from a Dragon guarding Caerphilly Castle to life-size baby crabs. Magnificent beasts from discarded satellite dishes to delicate spoon bent creatures, created with equal brilliance.

Many galleries stock his work throughout the UK, including the Kooywood Gallery, Cardiff and the Jane Reeves Gallery in Padstow. Barry can also be contacted to discuss commission work via email or his Facebook page.



### EWEMOO

Tel: 07778 102238

Email: ewemoocrafts@gmail.com

www.ewemoo.co.uk

On our pages since the very early years of ART SHARE LOVE Magazine, the fabulous Ewemoo has gone from strength to strength. Ewemoo's are now in so many different colours, rainbows are getting jealous! You can choose a Ewemoo to fit in with any colour scheme in your home or office, from bright pink to mustard yellow, brighten up your space and give it some personality. Ewemoo's are stocked in many different shops throughout Wales. They can also be bought direct or at lots of different events throughout the year. Check their website and social media for regular updates.



### ANGELA HATHWAY

Email: ah.animalarts@hotmail.com

Facebook: Angela Hathway Animal Arts

This year, I have been asked to exhibit my sculptural animal ceramics in Pembrokeshire National Park visitor centre. Consequently, I am developing new works which relate to the history and the environment of the National Park and to St. David's Cathedral. Mainly, I seem to have been playing with Puffins!

Throughout October and November, I will be exhibiting in The Discovery Room windows, Oriel y Parc, St David's.

IMAGE: 'Double Act'

### BARRY ARNOLD

Email: barry.arnold.uk36@gmail.com

Facebook: @Barry Arnold Artist

Website: www.Barry-Arnold-Artist.com

A painter from the heart and soul, the brilliant Barry Arnold captures glimpses of times past. Inspired by the Ceredigion coast with its rich rugged landscape and the Monmouthshire and Brecon canal, Barry paints with true passion from fond memories in his heart.

To purchase Barry's exceptional paintings, contact him direct via email. For regular updates, follow Barry on his Facebook page.



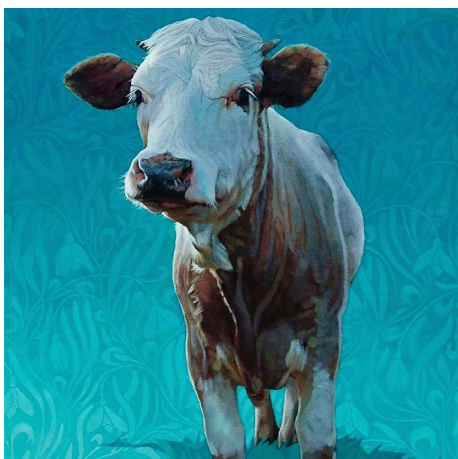




**CHRISTINE DADD**  
Tel: 07863563461  
[www.christinedadd.co.uk](http://www.christinedadd.co.uk)

As a supporting artist of the David Shepherd wildlife Foundation, Christine uses a unique style of wildlife painting creating a closeness to the wildlife by focussing on key animal characteristics. Christine believes in the personal nature of art and only provides work either as one-off originals or in low number limited editions. This gives the owner a sense of individuality and exclusivity.

Inspired by a recent trip to Botswana, look out for new work from Christine in the coming months.



**PAUL BURGESS**  
[www.paulburgessart.com](http://www.paulburgessart.com)

Paul has lived and worked in Monmouthshire for most of his life and makes his living entirely from selling and exhibiting through galleries in the South Wales region, the Cotswolds, Berkshire and by private commission. His work can be viewed at Oriol CRIC Gallery Crickhowell, The Art Gallery Tetbury, The Robin's Nest Gallery, Reading and The Picture Card Gallery, Taurus Crafts, Lydney.

Paul has a wide selection of limited edition and open edition prints, he also has two new ranges of greetings cards published by Nethertons and LoveFromTheArtist.

IMAGE: 'Snowdrop' Limited Edition



**PENNY SAMOCIUK**  
Tel: 07967327970  
[www.pennysamociuk.com](http://www.pennysamociuk.com)

I love vibrant, happy colours and feel compelled to brighten even the most dismal, depressing damp scene. To lift and exaggerate the muted colours to show the potential and bring out the positives. Optimism, Hope, Promise, Determination, Energy, Cheerfulness and all in colour. MY colour.

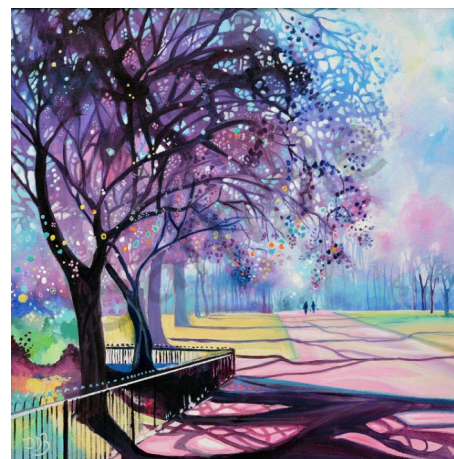
My paintings are available via The Bay Gallery, 18 Pier Street, Aberystwyth  
Commissions always welcome.



**RHIANNON ROBERTS**  
Email: [sales@rhiannonart.co.uk](mailto:sales@rhiannonart.co.uk)  
[www.rhiannonart.co.uk](http://www.rhiannonart.co.uk)

Vibrant and magical, Rhiannon Roberts' work is unforgettable! Another artist who has appeared in ART SHARE LOVE over many years, Rhiannon's work is both beautiful and captivating. With scenes from some of the most incredible places, each are painted in Rhiannon's own unique style. Quirky and fun with watercolour magic, only Rhiannon can create.

Rhiannon's work is available direct via her website.



**DENISE DI BATTISTA**  
Tel: 07805063649  
[www.artofwales.com](http://www.artofwales.com)

Coastal, landscape, figurative and abstracts, there really are no boundaries to Denise Di Battista's creative talents. Brimming with colour, mystical and intriguing, this is the sort of art, which lights up a room.

"My style could be said to be eclectic, each painting for me is an adventure, I explore various methods of execution until I arrive at a solution that I feel will reflect how I conceive the subject."

All of Denise's work can be purchased via her website.

IMAGE: Kensington gardens



**PHIL ROSS**  
Email: [phil.m.ross@btinternet.com](mailto:phil.m.ross@btinternet.com)  
Facebook: @Phillip Ross

An artist capturing the heart of a 'moment', Phillip Ross produces original watercolour art. From the industrial to street scenes, Phillip's work is nothing short of mesmerising and painted with pure passion. Inspired by the beauty of architecture, Phillip's work encapsulates its subject matter and transports you to that moment in time. With only original works available, Phillip's work is highly collectable. It can be purchased direct or from the Cardiff Frame Company and from The Big Sky Gallery in Usk.

IMAGE: Rainy Day in Bath





**MARTIN ROBERT REED**  
[martinrobertreed.com](http://martinrobertreed.com)

An artist constantly evolving, Martin Robert Reed is a modern day Warhol. Martin's recent series 'Liquid Lite' is bursting with life and personality. An artist who truly evolves continually, Martin's work is well worth collecting. "Through my paintings it is my intention to immerse the viewer in reality, not just my own reality as an artist, or the paintings' reality, but for the viewer to ask questions about their own current reality and the times we live."

The 'Liquid Life' paintings are part of the 100% abstract exhibition at Le Dame Gallery, Melia Whitehouse Hotel, Regents Park London.



**RICHARD BLACKLAW-JONES**  
**Facebook page:** Beachcombing Art  
[www.Beachcombingart.co.uk](http://www.Beachcombingart.co.uk)

Using the discarded material of the civilisation around him. He chooses to use only man made materials recovered from beaches, partly as a practical gesture and partly to make an obvious environmental point. In using these materials and their provenance to reflect society and its conflicted attitudes to itself he is making an implicit comment on that society. Sometimes ironic, sometimes amused, sometimes horrified.

Temporary gallery 'Rock House Goes POP' 15 North Street, Haverfordwest, SA61 2JE from 14th to 28th September.



**KIM & MAGGIE DAVIS**  
[www.kimwdaviswoodturner.com](http://www.kimwdaviswoodturner.com)  
[www.mixedupmaggie.co.uk](http://www.mixedupmaggie.co.uk)

Kim is Inspired by shapes made by the purity of ceramic art, combined with modern wood turning his aim is to produce individual vessels that both enhance the intrinsic beauty of a richly figured wood and combine with the tactile shape to transcend any functionality. Maggie Works in inks, acrylics, earth pigments, dyes and pastels on cloth and paper with the enhancement of stitch and word.

Both Kim and Maggie exhibit regularly throughout Herefordshire and Shropshire.

## A New Space for Artists in Monmouth

Between its own exhibitions, IAP Fine Art now offers its new exhibition space for hire to artists. Situated in a beautiful Georgian pedestrian street, alongside independent bookshops and the renowned Savoy Theatre, the gallery is situated in the heart of Monmouth's cultural old quarter with excellent footfall and accessibility. The gallery has a 36 sq metre indoor exhibition area, long white walls, track spotlighting system, plinths, kitchenette and WC. With 23yrs of experience in the London art world, IAP Fine Art also offers help with press and promotion, social media, installation and takedown, professional invigilation, credit card processing, as well as supplying a temporary bar, staff and glasses for private views. Unique for a hire space and if requested, IAP Fine Art also offers artists the option of juxtaposing their work with that of Maggi Hambling, Chris Gollon, Henri Matisse, Pablo Picasso or Graham Sutherland to help enhance their own artist's CV. IAP Fine Art is currently exhibiting the work of its main artist Chris Gollon (1953 – 2017). The exhibition features major works partially inspired by song titles or lyrics from Bob Dylan and Neil Young among others.

The latest books published on Chris Gollon's work are also available in the gallery. To find out more regarding prices and availability for gallery hire, or for information on the current exhibition, email [info@iapfineart.com](mailto:info@iapfineart.com) or call 01600 772005 or visit [www.iapfineart.com](http://www.iapfineart.com).



IAP Fine Art is the perfect place to host your own solo or group exhibition in the heart of affluent Monmouth. Professional gallery with excellent lighting, white walls and plinths; located on a Georgian listed street in Monmouth's cultural quarter. We can also help you with invigilation, press and promotion, installation and takedown. Contact us for prices and terms.

**HIRE IAP FINE ART**  
 FOR YOUR EXHIBITION

**IAP • FINE ART**  
 15 Church Street, Monmouth, NP25 3BX  
[www.iapfineart.com](http://www.iapfineart.com) | [info@iapfineart.com](mailto:info@iapfineart.com)  
 0844 561 1833





Paul has lived and worked in Monmouthshire for most of his life and makes his living entirely from selling and exhibiting through galleries in the South Wales region, the Cotswolds, Berkshire and by private commission.



'Lambency Wood' Limited Edition

Generally his paintings can be divided into two distinct types; highly figurative representations of animals and landscapes often painted to commission for private clients. His other more personal work, although from a similar subject matter, is much more intense and concerned with pattern making. These images look highly realistic from a distance, tricking the eye and mind into making sense of the marks, yet on closer inspection repetitive blocks and shapes break up the surface into flattened patterned

sections. In these intricately detailed images He explores his interest in how all things in the natural world are inextricably connected; ideas he investigated and developed during a period of his life when he studied Buddhism and was ordained as a Buddhist monk.

He has won a number of prizes - notably the W.M Patterson Fine Arts Award given for a pastel study exhibited at the Mall Galleries, London. In 2013 he was short listed by Artists & Illustrators Magazine, for 'Artist of the Year' with 'Never Mind The Bullocks'. The magazine again featured his work as 'Painting of the Month' with 'Oak Wood', inspired by the morning light seen through trees in 'Wentwood' near Newport - one of his favourite locations. He was also voted "Artist of the year 2014" at The Art Gallery Tetbury and more recently had a painting accepted as a permanent addition to the Luciano Benetton Imago Mundi Welsh Collection.

His work can be viewed at Oriel CRiC Gallery Crickhowell, The Art Gallery Tetbury, The Robin's Nest Gallery, Reading and The Picture Card Gallery, Taurus Crafts, Lydney.

Paul has a wide selection of limited edition and open edition prints, he also has two new ranges of greetings cards published by Nethertons and LoveFromTheArtist.

All are available via his website at:

[www.paulburgessart.com](http://www.paulburgessart.com)

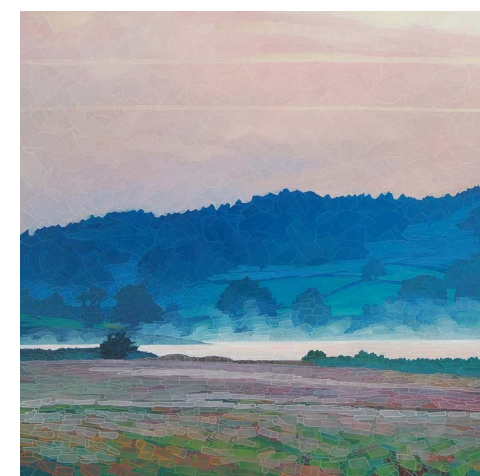
# Paul Burgess ART



'A Passing Light' Oil On Canvas 36" x 48" (On show at Oriel CRIC, Crickhowell)



'Cadira Path' Oil On Canvas 36" x 36"  
(On show at The Art Gallery, Tetbury)



'Esthwaite Mist' Oil On Canvas 36" x 36"  
(On show at Oriel CRIC, Crickhowell)

[www.paulburgessart.com](http://www.paulburgessart.com)

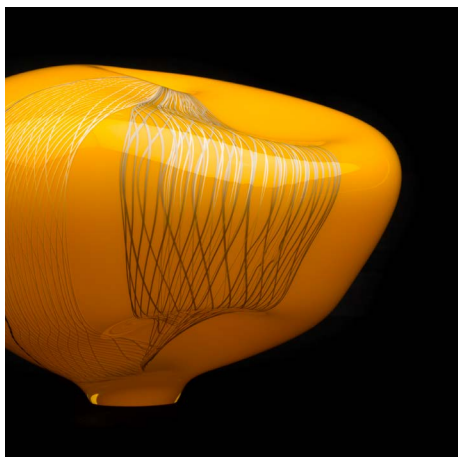


# NEW & EMERGING ARTISTS 2017



**ELLIE BURTON**  
[ellieburtonglass@gmail.com](mailto:ellieburtonglass@gmail.com)  
[www.ellieburtonglass.co.uk](http://www.ellieburtonglass.co.uk)  
 Instagram: @ellieburtonglass  
 Facebook: Ellie Burton Glass

Since discovering hot glass at university, it has been a passion. I am fascinated by the fluidity of hot glass and the control required to work with it. These pieces have been developed through experimenting with layering colours, and allowing the material to naturally dictate the form of the pieces. The influence is the concept of urban decay, man-made structures becoming forgotten and left for Mother Nature to reclaim.



**BEN LINTELL**  
 Tel: 07460004855  
 Email: [benjamin-uk@hotmail.co.uk](mailto:benjamin-uk@hotmail.co.uk)  
 Facebook: @blintell  
 Instagram: @blintell  
[www.benjaminlintell.com](http://www.benjaminlintell.com)

Translation and communication are at the heart of my Art work. The pieces I make express how I experience beauty in nature, from the ancient forms in geology to the physics of energy, interaction and movement. I use molten glass to capture these ideas in a sculptural form. Glass is alive and is a collaborator in all of my work, helping to translate thought into a physical form.



**NATASHA JACKSON**  
 Email: [natashajacksonceramics@gmail.com](mailto:natashajacksonceramics@gmail.com)  
 Facebook: [natashajacksonceramics](https://www.facebook.com/natashajacksonceramics)  
 Instagram: [natashajacksonceramics](https://www.instagram.com/natashajacksonceramics)

Natasha is a ceramicist who has a passion and love for a traditional skill within ceramics which is throwing functional objects. Natasha is inspired by bold statement colours and loves to be in control. The inspiration of colours represents the sunset.

Another interest of Natasha's is wood turning and laminating acrylic. Her strong Passion for the craft resolves with the beauty of the outcome.

**Graduate of Staffordshire University, Ceramics**



**JULIE HUTTON**  
[juliedhutton@yahoo.co.uk](mailto:juliedhutton@yahoo.co.uk)  
 07800726877  
 Facebook : Julie Hutton Ceramic Art

Julie is a conceptual ceramic artist, living in Laugharne. She graduated from Carmarthen School of Art in 2017, with a first in Ceramics.

Julie created a series of hand built earth spheres to illuminate the effects of the Anthropocene, giving these objects a space and a voice. Adopting the Jungian premise that earth is not a dead body, but is inhabited by a spirit that is its life and soul.

**IMAGE: Methane**



**CERAMIC ARTIST: Rachel Hoyle / Hoyle Ceramics**  
 Email: [hoyleart@gmail.com](mailto:hoyleart@gmail.com)  
[hoyleceramics.co.uk](http://hoyleceramics.co.uk)  
 Fb/Twitter/Lin/Instagram: Hoyle Ceramics

Stoke-based Hoyle Ceramics creates beauty from the Earth. From the tactile surface treatment and decoration, the viewer's eye connects naturally with the maker's hand. Liverpool-born Rachel, with a Masters degree from the home of ceramics, is inspired by nature, historic architecture and the beauty to be found in their coexistence. She records everyday inspirations with pen & ink sketches and clay in her signature style of informal, accessible art pieces. Rachel is currently exhibiting at Llantarnam Grange Arts Centre, Cwmbran. Her work will also be featured in September at FRESH, British Ceramics Biennial 2017.

**IMAGE: Rugged Gold, stoneware**





### JOHANNE MOSS

Tel: 07525535611

Email: [noaniettdesign@gmail.com](mailto:noaniettdesign@gmail.com)

[www.facebook.com/noaniettdesign](http://www.facebook.com/noaniettdesign)

Bringing sheer delight into the home with her latest range of fabrics and wallpapers is Pembrokeshire based textile designer, Johanne Moss. Her cheeky wildlife characters are developed from initial sketches into whimsical designs through various printmaking processes. They are then digitally honed into repeat patterns for textile meterage and wallpaper. Recent exhibitions include New Designers in London and the Graduates Show in King Street Gallery, Carmarthen.

Please ring or email for information on commissions.



### KIERREN BARNFIELD

Website: [Kierrendesignermaker.wixsite.com](http://Kierrendesignermaker.wixsite.com)

Facebook: [KierrenDesignerMaker](https://www.facebook.com/KierrenDesignerMaker)

Instagram: [KierrenDesignerMaker](https://www.instagram.com/KierrenDesignerMaker)

Email: [kierrendesignermaker@outlook.com](mailto:kierrendesignermaker@outlook.com)

Nature has always been the central influence of my work, understanding and challenging the capabilities and possibilities of materials such as glass. My work explores the delicate nature of glass, the shapes and forms of objects collected from the local surroundings. Through experimentation I strive to make truly one of a kind pieces of both functional and decorative purpose for interior decoration, whilst staying true to the meaning of nature.

Craft in the Bay (26th July – 27th August) Maker 3.0 exhibition & Jacobs Antiques Cardiff (October - November)



### DANIELLE FLOWERS CONTEMPORARY CRAFT

[www.dflowersmaker.co.uk](http://www.dflowersmaker.co.uk)

E: [dflowersmaker@gmail.com](mailto:dflowersmaker@gmail.com)

T: 07854818414

F: [@dflowersmaker](https://www.facebook.com/dflowersmaker)

I: [@danielle.flowers\\_maker](https://www.instagram.com/danielle.flowers_maker)

"Danielle handcrafts contemporary, wood turned home décor and jewellery, using native timber sustainably felled in Shropshire. Engaging with the rhythmic and meditative process of woodturning, with the aim of preserving traditional craft processes, by creating balance and harmony between material qualities and their aesthetic values. Danielle graduated from Cardiff School of Art and Design in 2016, and since has set up her business from the rural surrounds of Ludlow, Shropshire."



### JOSHUA CHARLES

[www.JoshuaCharlesceramics.co.uk](http://www.JoshuaCharlesceramics.co.uk)

Email: [joshua\\_charles@hotmail.co.uk](mailto:joshua_charles@hotmail.co.uk)

Contact number: 07807062590

Being based in Devon, I live in a landscape uninterrupted by large industrial structures often seen in urban environments, giving me the freedom to see the vast beauty of the Devonshire landscape and its skylines. Sunsets as such, heavily influence the finishes predominately found in my work; often carrying with it Eastern philosophies and aesthetics, balanced with the actualisation of allowing the material to have a voice of its own.



### STEPHANIE BURNHAM

Email: [stephaniejaneburnham@gmail.com](mailto:stephaniejaneburnham@gmail.com)

Blog: [stephaniejanedesigns.wordpress.com](https://stephaniejanedesigns.wordpress.com)

Instagram: [stephaniejaneburnham](https://www.instagram.com/stephaniejaneburnham)

'Textiles has given me a real interest in how soft and malleable materials can be manipulated, stitched and folded to create form. My most recent collection, Hard/Soft/Constructs, displays the reverse of material properties by making soft forms ridged. My work offers users the benefits of strong, durable materials but with a soft and tactile aesthetic. Each piece is easily assembled and disassembled to meet the needs of specific environments.'

IMAGE: 'squished in suspension'



### AGATA HALL

Tel: 07958517485

Facebook: [@ceramicsandjewellery](https://www.facebook.com/ceramicsandjewellery)

Instagram: [agatahall](https://www.instagram.com/agatahall)

I am an enquiring artist on a journey driven and inspired by nature, cultural diversity, form, material and texture. At a highly experimental and developmental point of my artistic inquiry, I seek to develop my interest and understanding of natural form, texture, colour and beauty. A narrative of nature, culture, cause and effect, and responsibility are recurring themes within my work. I am currently engaged with throwing and hand building in stoneware clay and its possibilities as a medium. For the latest designs, new product range, events and exhibitions follow my Facebook and Instagram page.



ARTIST

# Goff Danter



'Over The Dingle'

'Artrooms'  
The Goff Danter Gallery  
50a Beaufort Street  
Brynmawr, NP23 4AG

Email: [contact@goffdanter.co.uk](mailto:contact@goffdanter.co.uk)  
[www.goffdanter.co.uk](http://www.goffdanter.co.uk)

## MARTIN'S FRAMING & GALLERY LTD.

RARE ORIGINAL PAINTINGS & FINE  
ART LIMITED EDITION PRINTS

Peter Howson  
Graham McKean  
Goff Danter  
Haydn Gear  
John Knapp Fisher  
John Lines  
James Martin  
Chris Prosser  
Julia Menzies  
Michael Barnfather  
Jane Pritchard  
Roger Morgan



Old Police Station in Baker Street, Abergavenny

If you are visiting the wonderful market town of Abergavenny, why not call in to Martin's Framing and browse at your leisure, everyone is given a warm welcome as Martin is happy to chat and share his experience of Art with his visitors. As well as an impressive collection of art, a bespoke framing service is also available to professional artists and the general public.

You have a friendly service from Tuesday to Saturday, 9:30am to 5:30pm.

Telephone: 01873 856633  
Mobile: 07854 843017

[www.martinsframing.co.uk](http://www.martinsframing.co.uk)



# GREAT BRITISH ARTISTS



**SALLY MILLS**

[www.sallymills.gallery](http://www.sallymills.gallery)

Email: [me@sallymills.gallery](mailto:me@sallymills.gallery)

I absolutely love painting and have held solo and open exhibitions in Sydney, Australia and South Wales, UK. I try to create art that is emotive, fascinated in exploring textures and new techniques, describing my art somewhere between expressionism, impressionism and abstract.

Inspired by water, I'm about to start a new collection of paintings; waves, streams, canals, lily ponds, anything to do with water patterns from below the water to reflections above. Please find me at [www.sallymills.gallery](http://www.sallymills.gallery) and [me@sallymills.gallery](mailto:me@sallymills.gallery)

IMAGE: 'Epic'



**STEPHEN POWELL**

Email: [steve.powellriba@btinternet.com](mailto:steve.powellriba@btinternet.com)

[stephen-powell-artist.com](http://stephen-powell-artist.com)

My art practice has been part of a series called Finding Diana which, since time immemorial, has been nothing more than making the idealised rather than identified and as such creates a phenomenon as opposed to the tangible. It has been concerned people watching, which is interesting in its own right, and the outcome unpredictable.

IMAGE: The Conversation

# GREAT BRITISH ARTISTS



**MARTIN BUSH**

[www.martinbush.co.uk](http://www.martinbush.co.uk)

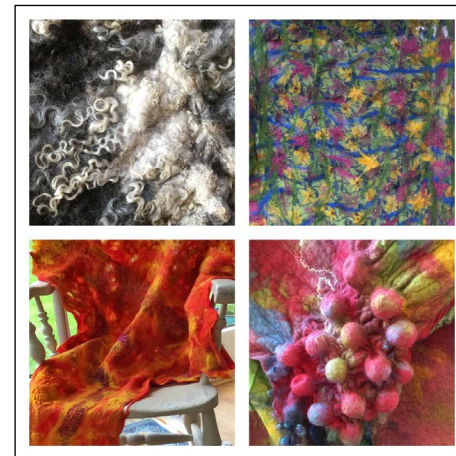
Tel: 07703 231150

Email: [art@martinbush.co.uk](mailto:art@martinbush.co.uk)

Facebook: [MartinBushFineArt](https://www.facebook.com/MartinBushFineArt)

Martin has been traveling to Thailand for as long as he has been a professional artist and over the 20 years has built a strong following in the UK as well as overseas. His latest paintings are inspired by his love of Thai temples and culture using gold leaf with brightened pallet his free flow style takes you to his second home. You can visit his latest exhibition at Artizan Gallery, Torquay 2nd – 23rd Sept. Also visit him in his gallery/studio in Plymouth.

MARTIN BUSH GALLERY - STUDIO,  
Royal William Yard, Plymouth UK PL1 3RP



**JANE EVANS at Fabulous Feltings**

website: [www.fabulousfeltings.co.uk](http://www.fabulousfeltings.co.uk)

email: [jane.evans24@btinternet.com](mailto:jane.evans24@btinternet.com)

Find me on Facebook: [Fabulous Feltings](https://www.facebook.com/FabulousFeltings)

Unique felted art, handmade in the Tywi valley - to wear, admire and enjoy in many ways. Conceived and designed with colours influenced from Jane's travels through India and Morocco and textures taken from natural wool locks and curls.

Nuno felting allows wool and silk materials to fuse together beautifully and magically. Cobweb felting produces a delicate, light, but strong fabric which can be ideal for wearing and many other uses.





THE PUMPING STATION, PENARTH ROAD,  
CARDIFF, SOUTH GLAMORGAN, CF11 8TT



*The finest antiques, interiors & outdoor items*

TELEPHONE: 02920 221085

EMAIL: [info@thepumpingstation-cardiff.co.uk](mailto:info@thepumpingstation-cardiff.co.uk)

WEBSITE: [www.thepumpingstation-cardiff.co.uk](http://www.thepumpingstation-cardiff.co.uk)





# ALISON JOHNSON

— *Original Oil Paintings* —



ICELANDIC EDGE, 90 x 90 cm,  
OIL/MIXED MEDIA ON CANVAS

Tel: 07584027449  
[www.alisonjohnsonartist.com](http://www.alisonjohnsonartist.com)

PENALLT ART  
FESTIVAL  
31ST AUG - 3RD SEPT 2017



PENALLT ART  
FESTIVAL  
31ST AUG - 3RD SEPT 2017



Penallt, Monmouthshire, Wales NP25 4SE  
[info@artinpenallt.org.uk](mailto:info@artinpenallt.org.uk)  
[www.penallt.org.uk/art-in-penallt](http://www.penallt.org.uk/art-in-penallt)



Entry £2.50  
U-16 Free

**7th Great Year**

*Opening event 31st August 18.00 - 20.00 (free)*

*1st-3rd September Exhibition in Capel Pentwyn  
10.00 - 16.00*

*Fine Art  
Sculpture  
Photography  
Glass  
Wood  
Jewellery  
Prints*

*Demonstrations in Babington Meadow*

*Children's Art Workshop, Babington Meadow  
11.00-12.00 2nd & 3rd Sept (booking required  
[amandasjack@hotmail.co.uk](mailto:amandasjack@hotmail.co.uk))*

*Art Course at Pelham Hall 09.30-13.30 Sept 2nd  
(booking required  
[paula\\_brady@btinternet.com](mailto:paula_brady@btinternet.com))*

*Refreshments*

*Free parking  
Disabled access throughout*

[www.penallt.org.ukart-in-penallt](http://www.penallt.org.ukart-in-penallt)









Sue Brown



Angela Soulier



Nick Holmes

**9-17 September**

**Meet almost 300 artists at over  
100 venues, explore studios, galleries  
and group exhibitions.**

Find out more, and get your  
**FREE** guide & map from late July

**[www.h-art.org.uk](http://www.h-art.org.uk)**

**MARK YOUD**  
markyoud.co.uk



Fragment LIII, bronze, edition of 3



# ART APPRECIATION COURSE

STUDY ONLINE  
with  
Hilary Kay



Enrol with  
Friends  
and Save!

*Start an Exciting  
New Hobby or  
Take Steps to  
Change Your  
Career*

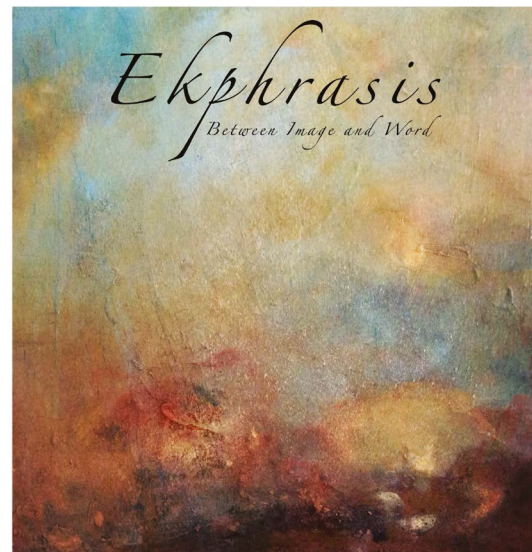
- Written by Leading Experts
- Diploma Course
- Study Online, at Home, in Your Own Time
- 24 Hour Student Support
- 7 Day Money Back Guarantee
- Flexible Payment Options

For more information email us at:  
**info@theartinstitute.co.uk**  
**www.theartinstitute.co.uk**

**THE ART INSTITUTE**

## Maria Pierides

**Ekphrasis: Between image and word**



Maria Pierides's work is inspired by her surrounding landscape, cultural identity, history, myth, time – and poetry. The resulting visual abstractions are the outcome of conversations with the artist's being in a particular place at a given time, shortcuts of her lived experience in colour, in texture, in paint. The collaboration with Stella Pierides, who responds to the paintings with haiku, the shortest of poetic forms, adds layers of meaning that expand in ever widening circles and offer new and unexpected inroads to the paintings. Between image and word, between substance, imagination, and reflection, between the past and the present, a world resonates, inviting us to engage with the whole of our being.

To coincide with her solo show at King Street Gallery this autumn, Maria is working on a book featuring a selection of paintings with the haiku written in response to them. Artist Maria Pierides and poet Stella Pierides would be delighted to welcome you to "Ekphrasis", an exhibition of paintings with haiku responses at King Street Gallery, Carmarthen, 27 Oct-16 Nov 2017.

Private view 27th Oct 5:30-7:30pm

*An Exhibition of Paintings by Maria Pierides*

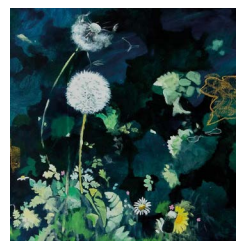
*Haiku Responses by Stella Pierides*

[www.mariapierides.com](http://www.mariapierides.com)



ARTIST

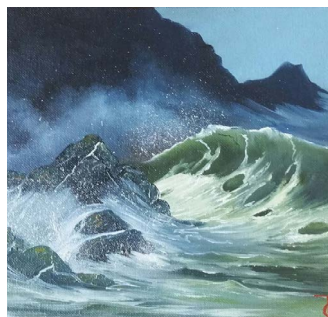
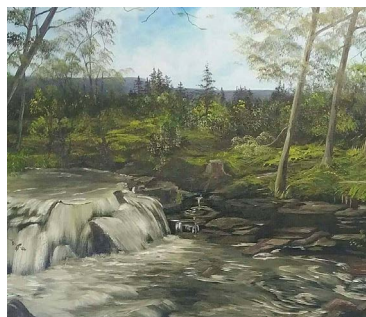
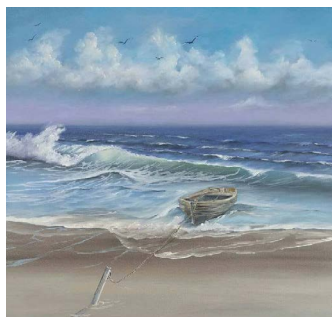
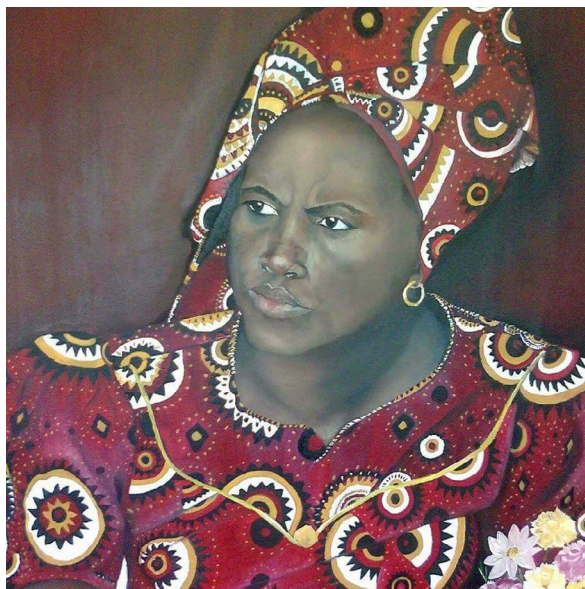
**DENISE DI BATTISTA**  
[www.artofwales.com](http://www.artofwales.com)



Email: [Contact@artofwales.com](mailto:Contact@artofwales.com) Mob: 07805063649  
John street Gallery, Llanelli, SA15 1UH



# ART BY TINA FRANCIS



A Published Artist and certified Bob Ross teacher, Tina Francis has been painting in oils for over 30 years and has exhibited all over the country. With an eclectic collection, Tina captures both stunning portraits, seascapes, landscapes and wildlife art. Tina's 'miners' portraits were recently exhibited in conjunction with the grand re-opening of the Cefn Coed Colliery Museum, Crynant, South Wales.

Takes commissions for Portraits, Wildlife and Landscapes | [www.tcpaintings.com](http://www.tcpaintings.com)

[f](https://www.facebook.com/artbytinafrancis) [i](https://www.instagram.com/artbytinafrancis) [t](https://www.tumblr.com/artbytinafrancis) artbytinafrancis | Email: [tcpaintings2@gmail.com](mailto:tcpaintings2@gmail.com) | Phone: 07916123940

# ORIGINAL WATERCOLOUR ART BY Phillip Ross



**IMAGE: Rainy Day in Bath**

An artist capturing the heart of a 'moment', Phillip Ross produces original watercolour art. From the industrial to street scenes, Phillip's work is nothing short of mesmerising and painted with pure passion. Inspired by the beauty of architecture, Phillip's work encapsulates its subject matter and transports you to that moment in time. With only original works available, Phillip's work is highly collectable. It can be purchased direct or from the **Cardiff Frame Company** and from **The Big Sky Gallery in Usk**.

**Email: [phil.m.ross@btinternet.com](mailto:phil.m.ross@btinternet.com) & Facebook: @Phillip Ross**





Greteili Morton 'Copper Ore'  
Acrylic on board, 25 x 30 cm

The oriel CRiC gallery in Crickhowell's varied autumn programme promises much to delight. Richard Bavin returns to the gallery with paintings which will give an artist's view of a year in the life of an ancient woodland, the PictureMakers will be welcomed to show paintings which vary in style from representational to abstract, and the CRiC Studio will show an exhibition of paintings by Prof. Liu Jianxin from Xinjiang and sculptures by Ass. Prof. Ms Yuan Yuan from Xi'an.

Lea and Paget's Wood, one of 55 reserves managed by Herefordshire Wildlife Trust, is an ancient woodland with a wealth of oak, ash, hazel coppice, chestnut, birch, yew and wild cherries. The wood has been used and worked by humans for centuries for fuel, charcoal and lime, with kilns still in evidence. Today it is a haven for both humans and wildlife. Doug Lloyd, Living Landscapes Officer at Herefordshire Wildlife Trust explained: "This is the first time we've had an artist-in-residence working year round on one of our reserves. Richard's drawings and paintings really capture the unique spirit of this much-loved ancient woodland."

Richard, a professional artist from Herefordshire, sees this as a very special project and partnership with the Trust. "It's a privilege to be given open access to Lea and Paget's Wood with its fascinating breadth of trees and wildlife." In his studio, Richard uses



Patrick Owen 'View from Cwm-Yr-Ychen Hill'  
Oil on canvas, 61 x 71 cm

his outdoor records as a starting point for watercolours and oils in which he seeks to convey the joy of being among trees in all weathers, and especially to capture moments when a scene is transformed by particular conditions of light and weather. A selection of work from his Lea and Paget's Wood series will be on show at the Oriel CRiC Gallery in Crickhowell from 13th September to 13th November. The private view will be on Friday, 15th September, and Richard will also be in the gallery with art materials for a Meet the Artist day on Saturday, 7th October, 11 am to 4 pm.

The Picturemakers/Y Llundwyr, a collective of visual artists, based throughout mid-Wales will be exhibiting alongside Richard. Their subject matter is varied, but much of it is based on close observation of the natural world or of contemporary life. The variety offered by these and other exhibitors should offer something for everyone. In addition, the week-long exhibition in the CRiC Studio (18 – 23 Sept.) has been curated by Robin Martin and Louise Che, in collaboration with Shaanxi International Cultural Centre, Xi'an China. The paintings by Professor Liu Jianxin from Urumchi University will give a glimpse into the landscape and the Uighur people and will, along with the sculpture, enrich the dynamic programme offered by the oriel CRiC gallery.

A comprehensive program of gallery events can be found on [www.visitcrickhowell.co.uk](http://www.visitcrickhowell.co.uk)

oriel  
CRiC  
gallery

## AUTUMN EXHIBITION

13 September - 13 November 2017

## CHINA BRIDGE 中國大橋

An Exhibition of Paintings by Prof. Liu Jianxin from Xinjiang and sculptures by Associate Prof. Ms Yuan Yuan from Xi'an

18 - 24 September 2017



[www.visitcrickhowell.co.uk](http://www.visitcrickhowell.co.uk)

Young Oak on Quarry Edge by Richard Bavin (Image cropped)



WIREWORKS BY

# Nina Lazarou

www.NinaLazarou.com

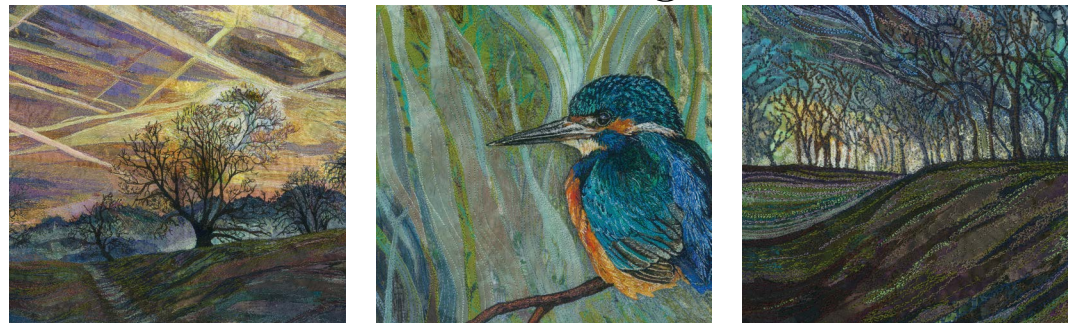


Nina is a self-taught wire artist from the Vale of Glamorgan and she refined her skills following a willow sculpture making course when she developed a curiosity in how wire could be manipulated into a recognisable form. Nina portrays the feeling of energy and movement in her unique sculptures and she enjoys the strength, suppleness and versatility that working with wire brings. With an enthusiastic appreciation of nature and animals she continues with self-development, always looking for new ideas and challenges. She exhibits her work at shows and galleries in Wales and takes private commissions. Nina has recently been awarded the Pavilion Periscope Sculpture Award 2017 at the Penarth Open Art Exhibition.

Email: [NinaLazarou@yahoo.com](mailto:NinaLazarou@yahoo.com) | Facebook: Wireworks by Nina Lazarou | Instagram: [wireworks\\_by\\_nina](https://www.instagram.com/wireworks_by_nina)

TEXTILE ARTIST

## Rachel Wright



Rachel Wright is an embroidered textile artist living on the Oxfordshire/Buckinghamshire border. She learnt to draw and paint from a young age with her artist father who encouraged and nurtured her talent. It was in her teenage years that Rachel fell in love with textiles and when her Granny bought her a Bernina sewing machine, her love affair with fabric and stitch began. She starts each piece by drawing in pencil directly onto the calico base fabric, then lays down tiny carefully cut pieces of fabric, forming a kind of palette of colours and texture. The fabrics are her paintbox and the threads, which stitch the fabrics down, are used like brush strokes on a painting. They 'add in' the fine detail. Rachel's favourite subject matter are land and seascapes and she especially enjoys stitching skies. As for that sewing machine her Granny bought her 30 years ago.....she still uses it every single day. Rachel's work can be seen at The Old Chapel Gallery, Pembridge, Herefordshire as part of their autumn and winter exhibitions.

[www.rachelwright.com](http://www.rachelwright.com)

[@rachelwrighttextileartist](https://www.facebook.com/rachelwrighttextileartist) [rachelsetford](https://www.instagram.com/rachelsetford) [@RSetford](https://www.instagram.com/RSetford)

## Richard Blacklaw-Jones

Richard is a modern day **POP** artist, using the discarded material of the civilisation around him. He chooses to use only man made materials recovered from beaches, partly as a practical gesture and partly to make an obvious environmental point. This stuff should not be there, it's marine pollution and is having bad effects on marine wildlife world wide. In using these materials and their provenance to reflect society and its conflicted attitudes to itself he is making an implicit comment on that society. Sometimes ironic, sometimes amused, sometimes horrified.

*"My work is individual and modern. Graphic, favouring strong colour, pattern and bold forms. I am producing images which reflect the vortex of our times."*



Facebook page Beachcombing Art or website:  
[www.Beachcombingart.co.uk](http://www.Beachcombingart.co.uk)

Temporary gallery 'Rock House Goes POP'  
15 North Street, Haverfordwest, SA61 2JE  
from 14th to 28th September.



# MARTIN ROBERT REED

## ...Liquid Life

The Inspiration for my paintings entitled "Liquid Life" have been influenced by author Zygmunt Bauman and his book title 'Liquid Modernity'. He considers words such as 'fluidity' and 'Liquidity' as fitting metaphors to describe the present phase in the history of modernity.

"The transition from 'solid' to 'liquid' modernity is the shift from a world in which human beings were seeking to create a well-ordered world of stable structures to a world in which the very idea of order and stability no longer have any purchase, a world in which change is the only permanence and uncertainty the only certain".

"We can no longer bear anything that lasts".  
Zygmunt Bauman.

Remaining current as an artist in a constantly changing world is challenging, through my paintings it is my intention to immerse the viewer in reality, not just my own reality as an artist, or the paintings' reality, but for the viewer to ask questions about their own current reality and the times we live.

The processes I have used in response was to allow the paint to flow, spill, run splash and pour allowing for the extraordinary mobility of fluids, mainly pouring paint into my hands and wiping them across the canvas surface, sometimes with my eyes closed so I didn't interfere with the direction and flow.

Capturing in paint this original concept of a fluid and liquid society has made me further question with intrigue, where will our shared human experience take us next?

The 'Liquid Life' paintings are part of the 100% abstract exhibition at Le Dame Gallery, Melia Whitehouse Hotel, Regents Park London.

Other works can be seen at:  
Avery's Gallery, Bristol (Solo show) Sept 6th – Nov 30th  
Kooywood Gallery, Cardiff  
Powerhouse Gallery, Llandysul  
[martinrobertreed.com](http://martinrobertreed.com)  
Reedmartinrobert



MARTIN  
ROBERT REED



# Rhiannon Art Ltd.



## *Land of Fantasy ~ A Celebration of Roald Dahl's Life and Work*

This unique and stunning piece of work has been reproduced from Rhiannon's original watercolour painting. It is made from hand cut and hand placed glass, and has been fired in a kiln for three days.

Image size 33" x 24" / Frame size 44" x 35"

**£1550**

Get in touch if you're interested in purchasing this one off piece of work.



## EweMoo Foot Rest



**T: 07778102238**  
**[www.ewemoo.co.uk](http://www.ewemoo.co.uk)**

e: [marketing@rhiannonart.co.uk](mailto:marketing@rhiannonart.co.uk)

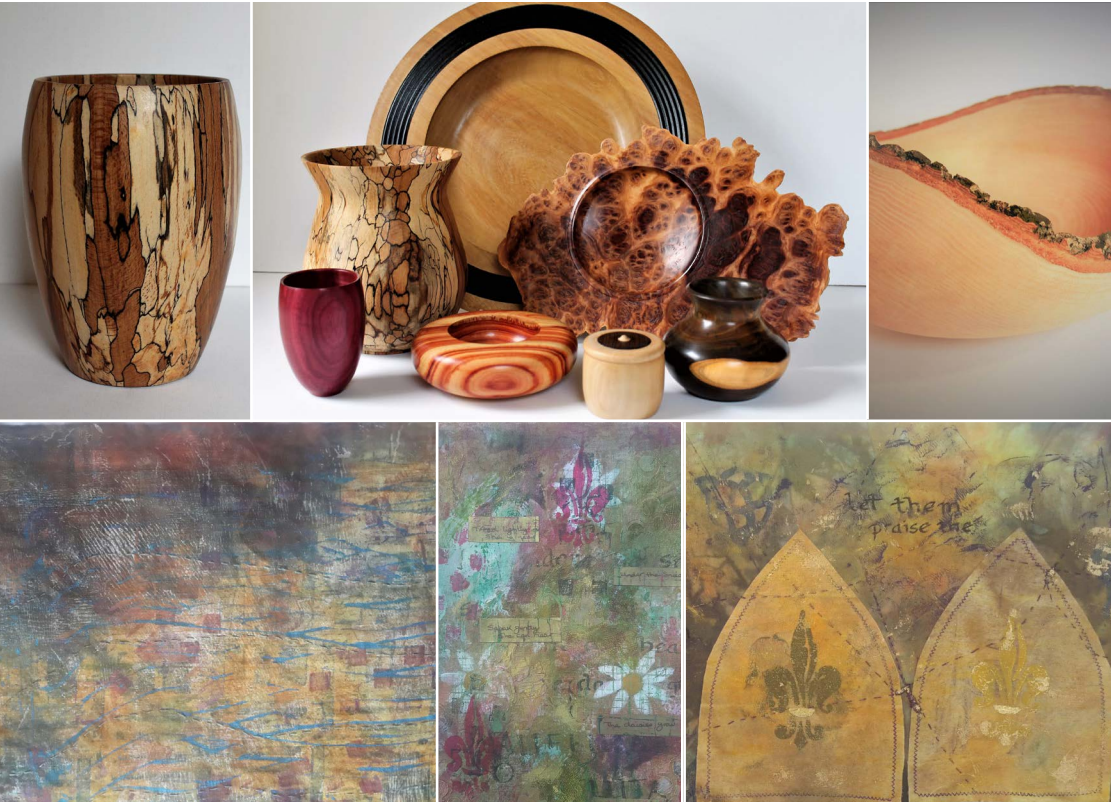
t: 07894085432

**[www.rhiannonart.co.uk](http://www.rhiannonart.co.uk)**



# KIM AND MAGGIE DAVIS

*a crafty fusion*



Kim and Maggie are looking forward to welcoming you to their home at  
Lingen Nursery, Lingen, Shropshire SY7 0DY, for h-Art week, September 9th – 17th 10 am – 5.30 pm

In addition Kim will be at:

Malvern Autumn Show, September 23rd-24th

Made by Hand Contemporary Craft Fair, Cardiff, November 3rd – 5th

Kim is Inspired by shapes made by the purity of ceramic art, combined with modern wood turning his aim is to produce individual vessels that both enhance the intrinsic beauty of a richly figured wood and combine with the tactile shape to transcend any functionality. Maggie Works in inks, acrylics, earth pigments, dyes and pastels on cloth and paper with the enhancement of stitch and word. Both Kim and Maggie exhibit regularly throughout Herefordshire and Shropshire, Kim is a member of Herefordshire Guild of Craftsmen and both are members of the visual Art Network in Shropshire

**KIM DAVIS**

Wood Turner

Email: [k.w.davis@hotmail.co.uk](mailto:k.w.davis@hotmail.co.uk) Tel: 07496716212

[www.kimwdaviswoodturner.com](http://www.kimwdaviswoodturner.com)

F. Kim Davis Wood Turner

**MAGGIE DAVIS**

Mixed Media Artist

Email: [maggie\\_in\\_the\\_garden@hotmail.com](mailto:maggie_in_the_garden@hotmail.com)

Tel: 07711778563 T. @mixedupmaggie1

F. Maggie Davis mixed media artist

[www.mixedupmaggie.co.uk](http://www.mixedupmaggie.co.uk)

## Christine Dadd



*Wildlife Artist*

Designer Art Mugs: £9.50  
Designer Art Coasters: £4.00



*christinedadd.co.uk*

*07863563461*

Christine uses a unique style of wildlife painting creating a closeness to the wildlife by focussing on key animal characteristics. She believes in the personal nature of art and only provides work either as one-off originals or in low number limited editions. This gives the owner a sense of individuality and exclusivity.



*Supporting Artist of*



DAVID SHEPHERD  
**WILDLIFE  
FOUNDATION**

Registered charity no: 1106893



# Chapel Cottage Studio

## THE HOME OF CREATIVITY!

Every year Chapel Cottage Studio takes a small group of students to the beautiful island of Mallorca for a weeks relaxed painting and sketching in the sun. In 2018 we will be taking two trips, one in early May (when it's not so hot) and another in the middle of June.

We hire beautiful villas in quiet areas with private swimming pools and gorgeous gardens and terraces for al-fresco dining, painting and sketching in the grounds.

Students all have their own bedrooms. During the week students have plenty of time to paint and sketch in and around the villas, the local towns and villages, making the most of Mallorca's stunning scenery and vibrant bustling markets. We also include trips out to paint and sketch at various beautiful locations across the island.

There is tuition from Jantien Powell for 6 hours per day with one free day for students to use as they please. Students are welcome to dip in and out of tuition (as well as the private pool) at any time. Villa's have well equipped kitchens for students who wish to cater for themselves, alternatively there are plenty of local cafes and restaurants close by for meals out.

Painting Holidays include accommodation and tuition as well as a minibus and driver within Mallorca. Basic painting materials are also supplied.

Our holidays do not include your flights or meals, though there will be basic provisions for breakfast and lunch when at the villas.

For more information about our 2018 painting holidays please get in touch at the details below. Please note that bookings must be secured with a £250 deposit pp before the end of September 2017 and places are limited to 7 students per holiday (non painting partners can be accommodated).

Painting Holidays  
with Chapel Cottage Studio



01873 840282 / 07935 934898  
info@chapelcottagestudio.co.uk  
www.chapelcottagestudio.co.uk

LIMITED SPACES.  
BOOK NOW  
TO AVOID  
DISAPPOINTMENT!

Our new brochure is out now. View it on-line via our website or email to request a hard copy.

# Chapel Cottage Studio



Chapel Cottage Studio  
Llanddewi Rhydderch  
Abergavenny, NP7 9TT  
01873 840282 07935 934898  
info@chapelcottagestudio.co.uk



www.chapelcottagestudio.co.uk



# BARRY ARNOLD ART & MUSIC

Email: [barry.arnold.uk36@gmail.com](mailto:barry.arnold.uk36@gmail.com)

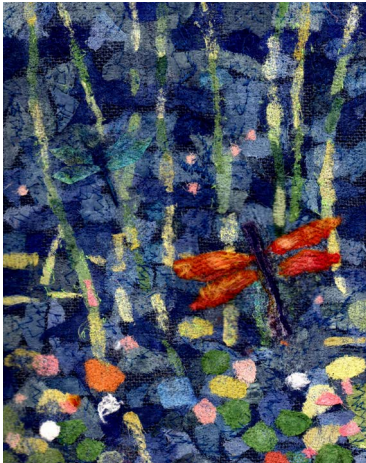
Facebook: @Barry Arnold Artist

Website: [www.Barry-Arnold-Artist.com](http://www.Barry-Arnold-Artist.com)

*Studio open to the public several times during the year. Please email for details.*



Barry Arnold is an artist who has lived in Pontgarreg, Ceredigion for 35 years with his wife, Christine who is also an artist working in textiles, felt, silk paper and mixed media, often using hand-dyed fibres.



Christine Arnold 'Dragonflies' 2017

Living close to the rugged coastline with stunning surrounding countryside, the seascape, landscape, farms and buildings have proved a source of unlimited inspiration for his paintings. Barry and Chris are both canal enthusiasts and spend a lot of time on their narrow boat on the Monmouthshire & Brecon Canal, which again provides stunning scenery viewed differently with every passing season. Now retired, Barry has more time to explore and experiment with painting and is producing work that is more relaxed and representative of how the countryside 'feels',

rather than looks. Blending colours subconsciously and refining his palette, his work shows its own style and originality. With heart and a passion for capturing moments past, Barry's work is nothing short of brilliant. There is a warmth and tranquillity found in every piece. A calming affect as you delve into what feels like his soul.

*"Chris and I will be doing more teaching and running courses from our home in Pontgarreg. Classes will be tailored to all abilities, particularly to encourage those who want to get started or progress further or for those who merely enjoy working alongside others."*

*"I sell mostly online these days via my website or from inquiries received from my Facebook pages. Occasionally I will enter work into exhibitions, such as the Waunifor Annual End of Summer exhibition that has just run this year from 19th-28th August. Also, I produce fine art prints of many of my paintings. Most inquiries for a good quality image can be accommodated. I also like to make videos and write and perform my own music compositions, but that is more of a hobby that I enjoy doing"*

Email: [barry.arnold.uk36@gmail.com](mailto:barry.arnold.uk36@gmail.com)

Facebook: @Barry Arnold Artist

Website: [www.Barry-Arnold-Artist.com](http://www.Barry-Arnold-Artist.com)

# Art By Barry Arnold

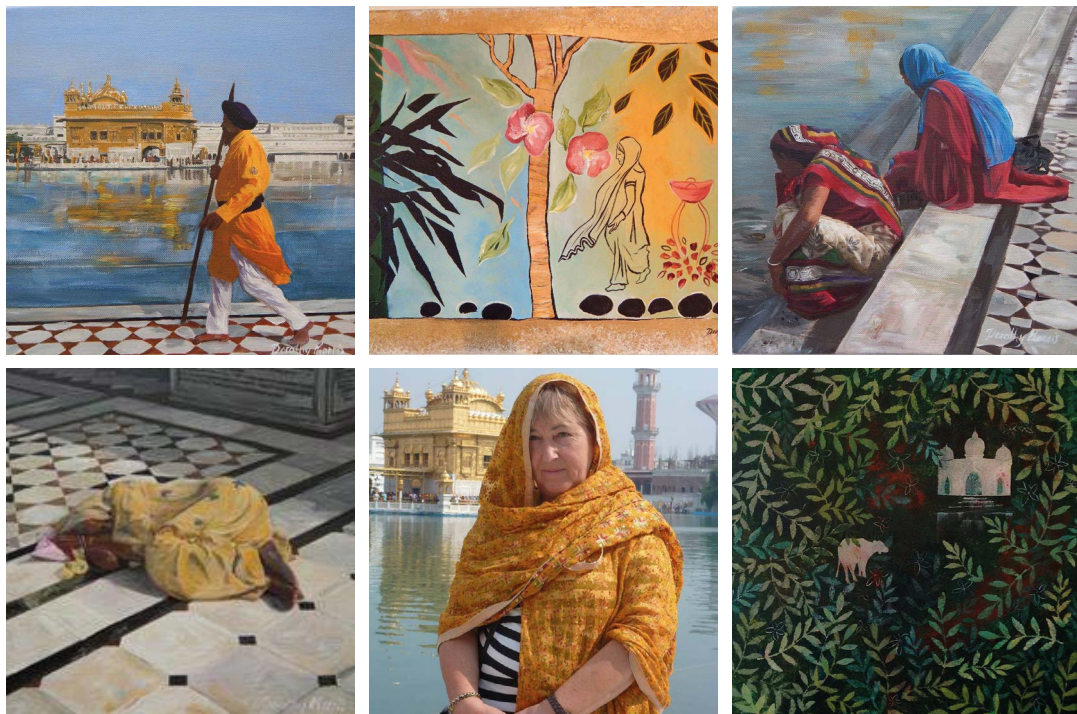


Facebook: Barry Arnold Artist  
Email: [barry.arnold.uk36@gmail.com](mailto:barry.arnold.uk36@gmail.com)  
Website: [www.Barry-Arnold-Artist.com](http://www.Barry-Arnold-Artist.com)



# GREENSPACE GALLERY

30 King Street, Carmarthenshire, SA31 1BS



Dorothy Morris who runs Greenspace Gallery and tearoom at 30 King Street, Carmarthen, has been invited to be the lead artist on a Painting Trip to Northern India in November 2018. Dorothy went two years ago to a beautiful retreat overlooking the Himalaya mountains. This time the owners of the treat have asked her to lead the group.

Anyone interested in this Painting and Batik holiday can either pop into Greenspace for details or contact Dorothy via:

Email: [dorothy\\_morris@hotmail.com](mailto:dorothy_morris@hotmail.com)



[www.dorothymorris.co.uk/greenspace-gallery](http://www.dorothymorris.co.uk/greenspace-gallery)



## ORIELMIMOSA

FINE ART



Oriel Mimosa is a gallery that specialises in Welsh art, stocking a range of original works and limited edition prints to suit all tastes - from the more prominent Welsh artists to the lesser known up-and-coming creative talent that take their inspiration from this beautiful country of Wales. We also offer a professional bespoke framing service.

**Oriel Mimosa Fine Art**  
68 Rhosmaen Street, Llandeilo,  
Carmarthenshire SA19 6EN  
Phone: 01558 328074

**Oriel Mimosa Welsh Art & Antiques**  
6 Market Street, Llandeilo,  
Carmarthenshire SA19 6AH  
Phone: 01558 822215

Opening Hours:

Monday – Saturday, 11:00 a.m. - 5:00 p.m. Closed on Sundays

Email: [sales@welshartist.co.uk](mailto:sales@welshartist.co.uk)

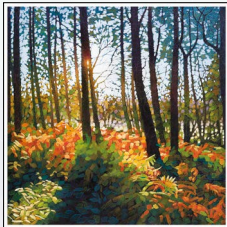


[www.orielmimosa.com](http://www.orielmimosa.com)



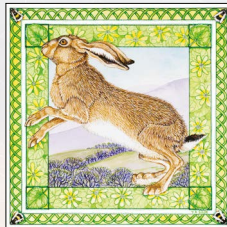
# Ipixel Art

*"I'm proud to let my customers do the talking"*



## Paul Burgess

*"Hats off yet again to Craig at IPixel Art, I had to get some prints done but Craig was so busy he couldn't see me until 5pm, which was obviously when he should have been going home. He spent over one and a half hours going through everything with a fine tooth comb and wouldn't stop until it was all perfect. It's a real pleasure to work with someone who is so conscientious about what they do and reassuring that my work is in such professional hands."*



## Tracey-Anne Stich

*"I've been going to I-Pixel since 2007 and will continue to take my watercolours for capture because Craig always delivers - fast, efficient, friendly service and beautiful prints, which I'm hard pressed to tell apart from my originals"*



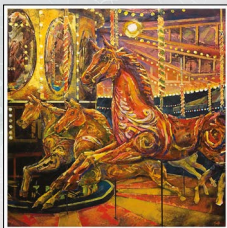
## Lee Wright

*"Since using IPixel Art to produce fine art reproductions of my work I have been able to reach a wider audience, thus dramatically increasing my profile and the revenues of my art business. I have been incredibly impressed at the skill and determination of Craig in ensuring that the reproductions of my art always look as good, and often better, than the originals!"*



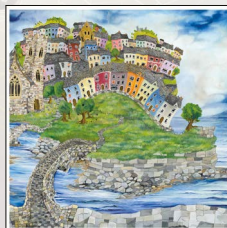
## David Day

*"I have used IPixel Art for many years. Craig has always been extremely helpful and has never let me down on urgent jobs. Craig is prepared to work closely with the artist, and the quality of the prints are incredible. My customers have regularly commented to me on how amazed they are with the printed versions of my work."*



## Goff Danter

*"IPixel Art has made a major contribution to the development of my reputation as a professional artist. Craig's commitment to providing the best possible service by understanding the needs of his customers has enabled me to reach a much larger audience, sooner than expected."*



## Jeremy Thomas

*"Craig has been reproducing my work for many years and has helped me enormously, he has an attention to detail that is second to none, working tirelessly to ensure that the subtleties in colour are captured perfectly and the printed image is beautifully crisp and clear. Craig is always prompt and professional, but above all else, a thoroughly nice guy. I'm always impressed by IPixel Art... thanks for all the hard work."*

*For over 12 years I-Pixel has been fortunate enough to have worked with a diverse range of both established and fledgling artists. Above you can see some of the testimonials given by just a small selection of them. I-Pixel Art specialise in the capture and reproduction of fine art, producing limited or open edition prints.*

*All meetings are by appointment only so please contact me using the details below.*

*38 Greenways, Hill Top, Ebbw Vale, NP23 6QN*

**craig@ipixel-design.co.uk 07852248073**