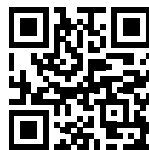


ART SHARE LOVE

Wales & Borders

FREE



JAN/FEB 2025

ISSUE 123

Cover Art: Rebecca Roper | Oriel Cric Gallery



Ann Catrin Evans | Dawn Harries Art | Giles Gallery

Cheshire School of Jewellery | Bluestone Gallery | Maggie Davis - Mixed Media Artist

Kim Davis - Wood Turner | Oriel Cric Gallery | Apple Store Gallery

Ewemoo | Jill Jones Fine Art



JANUARY/FEBRUARY 2025

JANUARY/FEBRUARY EDITION 2025

COVER ART: Rebecca Roper | Oriel Cric Gallery

Adverts/Editorial

Ann Catrin Evans

Dawn Harries Art

Giles Gallery

Cheshire School of Jewellery

Bluestone Gallery

Maggie Davis - Mixed Media Artist

Kim Davis - Wood Turner

Oriel Cric Gallery

Apple Store Gallery

Ewemoo

Jill Jones Fine Art

Say hello!

Email: ingrid@artsharelove.com

Tel: 07530875629

www.artsharelove.com

Sister publication: www.littlegalleryguide.com

Disclaimer: Reasonable care has been taken to ensure that the information contained in this guide in print and on the website are as up-to-date and accurate as possible, as of the time of publication, but no responsibility can be taken by ART SHARE LOVE WALES & BORDERS Magazine for any errors or omissions contained herein. Furthermore, responsibility for any losses, damages or distress resulting from adherence to any information made available through this guide/website is not the responsibility of ART SHARE LOVE WALES & BORDERS Magazine. Readers are advised to check with listings/article information with event providers to avoid disappointment. No responsibility will be accepted for any errors or omissions.

Beautiful
iron and gold
jewellery with
diamonds &
coloured
gemstones.
Iron love
spoons,
sculptural
door furniture,
architectural
and public
artworks.

ANN CATRIN EVANS



ANN CATRIN EVANS
acatevans@gmail.com



Siop iard
Stryd y Plas, Caernarfon
Gwynedd, Cymru, LL55 1RR
01286 672 472

www.anncatrinevans.co.uk
www.siopiard.com

ers.1989
CYMRU

Dawn Harries Art

Dawn Harries is a Welsh Contemporary Landscape Painter, using the natural beauty of the British countryside as her inspiration, especially the rolling hills and rugged coastline of Wales.

Dawn uses the effects of colour and contrast in her paintings to capture the character and atmosphere of the landscape in an impressionistic style, bringing a sense of place, warmth and familiarity into your home.

Whether you're looking for a small painting to gift to a loved one, or a statement piece for above your fireplace, browse available pieces on Dawn's website.

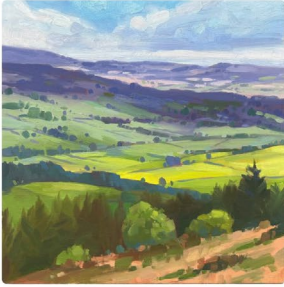
Sign up to Dawn's newsletter to be kept informed of exhibition news and invites. Scan the QR code or visit the website.



www.dawnharries.co.uk

email: info@dawnharries.com

Dawn Harries Art



www.dawnharriesart.co.uk
info@dawnharries.com



@dawnharriesart

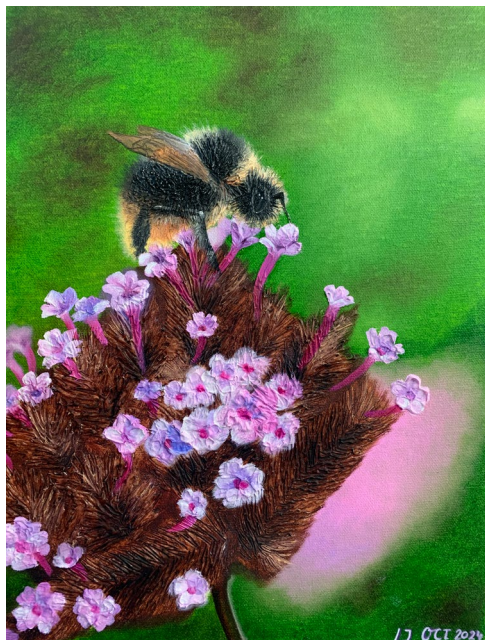


SCAN ME

Giles Gallery Art Students Exhibition

7th January - 1st February

A selection of art work of over 50 artists studying at Giles Gallery under the tuition of Beth Giles BA. From acrylic to oil, watercolour to pen and wash, and a vast range of subjects. Landscapes to portraits, botanical to natural history.



Find your ideal original artwork or unique gift, at affordable prices.

Tues - Friday 10 - 5pm | Saturday 10 - 4pm

Giles Gallery, Old Methodist Chapel, Cowbridge Rd, Pontyclun, CF72 9EG



Giles Gallery

Hywel Smith Art Exhibition

5 Feb to 1 March



I love painting. I love the feel of paint coming off a brush. I love the feel of mixing oil paint. I'm a self taught artist and painted seriously for the last ten years. I consider myself a colourist and as such my influencers are Cezanne, Van Gough and Scottish Colourists. I love painting and can only hope people get the same pleasure looking at my work as I get from the process of producing it.



Tel: 07879035921 Email: beth@gilesgallery.com

www.gilesgallery.com

The Cheshire School of Jewellery is a fully equipped workshop in the heart of the Cheshire countryside offering a range of jewellery making courses suitable for a range of abilities, including one-off workshops and longer courses in Silversmithing.



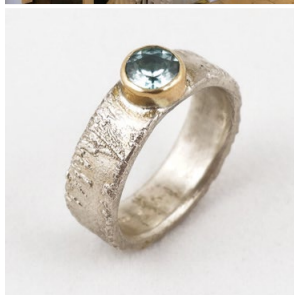
All courses are taught by fully qualified & experienced teacher Lisa Taylor.



cheshireschoolofjewellery@gmail.com | 07730 791416
www.cheshireschoolofjewellery.co.uk



Bluestone Gallery



Contemporary art and craft from across the British Isles

5 Castle Street, Hay on Wye, HR3 5DF
01497 820916

www.bluestonegallery.com

Maggie & Kim Davis



Maggie Davis Mixed Media

Maggie produces colourful statement pieces in mixed media on paper and cloth. She is inspired by the richness of our World and all it has to offer in the forms of organic texture, colour and heritage. She uses a mix of mediums such as acrylics, dyes and inks to create her mainly abstract artwork. Handmade and other manipulated paper may be used to add layers to create 3d effects, and stitch and word can enhance the pieces. She is in love with colour and enjoys playing around with it in all its forms to produce her work.



Kim Davis Wood Turner

Kim's working philosophy is 'from the hands of the artist to the heart of the beholder'.

The simplicity of his vessel forms he creates have the clean, calm lines of a timeless form. Inspired by the intrinsic beauty of the native and exotic woods he uses; he produces tactile shapes which have function at the same time as transcending into unique pieces of art by using the wood's natural organic traits often enhanced with various finishing techniques. Kim's practice is split between producing various product lines from bottle stoppers, lidded boxes and bud vases through to larger bowls, vases and platters to large statement pieces, including natural edge pieces, all are unique works.

He is a founder member of a co-operative group running The Artists' Gallery at Bromfield on the site of the Ludlow Farm Shop where his work can be seen all year.

January 13th to 9th February sees Maggie exhibiting as guest Artist at The Artists Gallery, Bromfield Food Centre, Nr Ludlow SY8 2J R. She will be showing her recent series of works based on The Outer Hebrides.

Kim and Maggie will be exhibiting In February with The Artist Collective Head To Art from **2nd to 15th**, at The Bear Steps Gallery, 2 St Alkmans Place, Shrewsbury SY1 1UJ

Kim and Maggie will also be at The Rose Patterson Gallery, Weston Park, Weston-under-Lizard, Shifnal, TF11 8LE from **2nd to 30th April**.

Maggie Davis | Mixed Media



Kim Davis | Wood Turner

Email: maggie_in_th_garden@hotmail.com

Instagram: [@maggie_in_the_garden](https://www.instagram.com/maggie_in_the_garden) | Twitter: [@mixedupmaggie](https://www.twitter.com/mixedupmaggie)

Tel: 07711778563

www.mixedupmaggie.co.uk

Email: k.w.davis@hotmail.co.uk

Instagram: [kimdavis0905](https://www.instagram.com/kimdavis0905)



Rebecca Roper | *Totes Boots, Mixed Media*



Paul Weston | *Sunset with Approaching Storm, Poole Harbour*



Tim Rossiter | *Five Days*

The new year is getting off to a great start at the Oriel CRiC Gallery in Crickhowell with a varied New Year Show (14 January – 8 March 2025). In addition to printmaking, ceramics, jewellery, glassware and sculptures, it will include a selection of paintings by, amongst others, Paul Weston and Rebecca Roper who was the winner of the 2024 Crickhowell Open Art competition.

Crickhowell based artist Tim Rossiter will be demonstrating his approach to oil painting in the gallery on the afternoon of Saturday 8 February from 2.30 till 4pm.

Planning is underway for the gallery's annual Open Art competition which results in an exhibition of selected work starting during the Spring Bank Holiday Weekend. Details of the online application process can be found on www.orielcric.wales The Crickhowell Open Art exhibition is a highlight of the gallery's programme and gives an opportunity to exhibit in this small but beautiful gallery space in the heart of the Brecon Beacons and Black Mountains. It annually attracts an exciting mix of professional, emerging and amateur artists culminating in a diverse exhibition starting during the Crickhowell Open Studios Weekend. (24 to 26 May 2025).

The gallery is looking forward to welcoming visitors to Crickhowell to enjoy its programme of changing exhibitions during the course of the year.

**Oriel CRiC Gallery,
Beaufort Street,
Crickhowell,
NP8 1BN**

For more information on the Open Art exhibition, please contact Suzette Pratten at gallery@visitcrickhowell.wales or visit www.orielcric.wales



Martin Truefitt-Baker

oriel
CRIC
gallery
www.orielcric.wales

New Year Exhibition
14 January – 8 March

& Call for entries
Crickhowell Open Art Competition
CLOSING DATE 31 MARCH 2025



Apple Store Gallery

Workshops at Apple Store Gallery 2024/2025

Drypoint

Monday, 20th January, 10am to 3.30pm



A workshop exploring the direct drawing art of drypoint printing. Scoring with drypoint tools, delicate marks into a Perspex plate and then inking and printing with an etching press. Drypoint is an intaglio/etching process which does not use any chemicals. Using a sharp point you can scratch, draw or gouge into the Perspex to create rich tones & velvety surfaces. You will have the chance to experiment with a range of tools, explore mark making, learn to ink, wipe and print a plate in black & white / colour.

With artist Jess Bugler RCA: <http://www.jessbugler.co.uk>

Moving Towards Abstraction Allison Neal **Tuesday 21st January, 10am to 3.30pm**

Do you look at abstract paintings and wish that you could produce work as exciting, but you have no idea how to even begin? Do you think your work is too controlled, but you don't know how to loosen up? Are you trying to find a way of exploring what it feels like to be in the world rather than just what the world looks like? We'll look at why some painters moved into abstraction in the twentieth century and how we can make use of their ideas in our own work. We'll work in acrylics on paper during the day but everything we do will apply to oils or pastels or any other medium. You'll need your usual painting materials, brushes, a palette to mix paints, an A4 drawing book or sheets of cartridge paper, and a notebook to record what you discover. You'll also need some scissors and Pritt stick or Copydex.



Risograph

Monday, 17th February, 10am to 3.30pm

A chance to create a bold colourful print or zine using a Japanese stencil printing machine called a Risograph. Participants will work with collage, drawing and paint to create their layers which will then be scanned in and transformed into a series of dynamic multi-colour prints or zines. Fun for all ages and all skill levels. With artist Jess Bugler RCA: <http://www.jessbugler.co.uk>



Perspective in the Landscape and Town Scape

Allison Neal

Tuesday 18th February, 10am to 3.30pm



Do you avoid painting townscape because, try as you may, the buildings always look as if they're falling over?

Are still lifes a problem because nothing in your painting looks solid and 3 dimensional?

And how do you get a real sense of space in your landscapes? You can see the distance you want to get in your painting of the landscape, you just can't get it in your painting.

We'll look at why the rules of perspective were developed, what aerial perspective is, and why, in the 20th century, painters looked at other ways to explore the world.

By the end of the work shop you'll know how to create the depth you want in your painting and how to explore other

approaches to your work.

We'll work in acrylics on paper during the day but everything we do will apply to oils or pastels or any other medium.

You'll need your usual painting materials, brushes, a palette to mix paints, an A4 drawing book or sheets of cartridge paper. You'll also need a soft pencil, 5 or 6 B, a soft rubber, charcoal, and a ruler.

Unit 1, Rockfield Road, Hereford, HR1 2UA

telephone . 01432 263 937

email . applestoregallery@btinternet.com

web . <https://www.applestoregallery.com>

Ewemoo

Foot stools

www.ewemoo.co.uk



Follow us on socials

Gifts for Every
Occasion



ewemoo

www.ewemoo.co.uk

Tel: 07778102238

Unit 2 Ystradgynlais workshops SA9 1BS



The interior design 'must-have' for 2025, ewe'll be spoilt for choice with a Ewemoo!

Everyone's got their own go-to colour and there's a Ewemoo footstool to suit any taste and colour palette choice.



Proudly made in Wales, a Ewemoo footstool is crafted using only the finest materials and adds an elegant, quirky and character filled finish to any space.

Visit their website to view a large selection of footstools, including their original sheep, bulls, pigs and even hedgehogs! There is even the option to customise it with their signature daffodil and different wood stain options.



On their website you will also discover an amazing range of gifts and accessories, all available to shop direct online:

www.ewemoo.co.uk

Discover your favourite Ewemoo today!

Jill Jones Fine Art

www.jilljones.co.uk

fresh fresh fresh

Fresh Architectural pieces



'The Vine Inn'

(40 x 40cm approx framed)

Original £850

Available from www.lifefullcolour.co.uk

Fresh Seascapes



'Coastal Sparkles'

(44 x 54cm approx framed)

Original £650

Available from www.jilljones.co.uk

Fresh for 2025!

sh fresh fresh!

Fresh Landscapes



'Of Sunsets and Stones'

(48 x 63cm approx framed)

Original £750

Available from www.lifefullcolour.co.uk

Fresh Still Life pieces



'Lemons'

(35 x 35cm approx framed)

Original £595

Available from www.lifefullcolour.co.uk



www.linkedin.com/in/jilljonesfineart



facebook.com/jilljonesart



instagram.com/jilljones_art



twitter.com/jill_artist



Jill Jones Fine Art
at Havens Art School



pinterest.co.uk/JillJonesFineArt



tiktok.com/@jilljonesfineart

Entry details
www.orielcric.wales

2024 Overall Winner:

Rebecca Roper

'From Sharpitor'

Visitors' Choice:

Victoria Matthewson

'How Dare the Robin Sing'



Crickhowell
Open
Art 2025



showcasing selected work in the Oriel CRiC Gallery

CRICKHOWELL OPEN STUDIOS & GALLERIES

Spring Bank Holiday Weekend

24 - 26 May 2025



Request a printed guide:

gALLERY@visitcrickhowell.wales