

FREE

ART SHARE LOVE

Wales & Borders



MAY/JUNE 2025

ISSUE 125

Cover Art: Bluestone Gallery | Hay-on-Wye



Garry Jones Ceramics | Fifties Art | Chapel Cottage Art Studio | Oriel Cric Gallery | Elaine Jones Art
North Pembrokeshire Open Studios 2025 | Tracey-Anne Sitch & TWASI | Giles Gallery | Craftfolk
Jill Jones Fine Art | Royal Watercolour Society of Wales | Life: Full Colour | Dawn Harries Art
Found Gallery | The Makers At Craft Renaissance | Old Chapel Gallery | Ewemoo | Apple Store Gallery



Cover Images: Courtesy of Bluestone Gallery, Hay-on-Wye
Ceramic dish, pebbles and pot by Shirley Smith
Penguin Book Vase by Thomasin Toohie
“Which One? (Book figure) by Kath Kingdon
Stoneware vessels by Philip Evans

MAY/JUNE 2025

Garry Jones Ceramics
Fifties Art
Chapel Cottage Art Studio
Oriol Cric Gallery
North Pembrokeshire Open Studios 2025
Tracey-Anne Sitch & TWASI
Giles Gallery
Jill Jones Fine Art
Royal Watercolour Society of Wales
Life: Full Colour
Dawn Harries Art
Found Gallery
The Makers At Craft Renaissance
Old Chapel Gallery
Elaine Jones Art
Craftfolk
Ewemoo
Apple Store Gallery

Say hello!

Email: ingrid@artsharelove.com

Tel: 07530875629

www.artsharelove.com

Sister publication: www.littlegalleryguide.com

Disclaimer: Reasonable care has been taken to ensure that the information contained in this guide in print and on the website are as up-to-date and accurate as possible, as of the time of publication, but no responsibility can be taken by ART SHARE LOVE WALES & BORDERS Magazine for any errors or omissions contained herein. Furthermore, responsibility for any losses, damages or distress resulting from adherence to any information made available through this guide/website is not the responsibility of ART SHARE LOVE WALES & BORDERS Magazine. Readers are advised to check with listings/article information with event providers to avoid disappointment. No responsibility will be accepted for any errors or omissions.

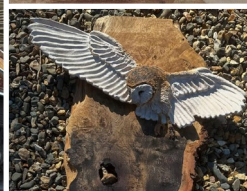
GARRY JONES CERAMICS

& studio



Master creator of extraordinary ceramics, Garry Jones' work is packed with happiness, positivity and incredible imagination.

In a world full of seriousness, embrace the lighter side of life, with Garry's unbelievably unique, beautiful and joy-filled ceramics.



Garry's ceramics are available in a range of sizes, from mini framed pieces to medium sized sculpture as well as larger pieces. Whatever piece you choose, Garry's sculpture will transform any space.

With regular commissions from shops as well as UK retailer River Island no less, Garry also creates work for individual clients. Get in touch to find out more.

***See Garry at the Malvern RHS Spring show
Three Counties Agricultural Society. Thursday
8th - Sunday 11th May 2025.***

Visit the studio at: Motte House ,Walford, Nr. Leintwardine, Herefordshire, SY7 0JT

Email: garryjones1962@outlook.com

Facebook: [@Garryceramic](https://www.facebook.com/Garryceramic) | Instagram: [@garryjonesceramic](https://www.instagram.com/garryjonesceramic)



John Piper in the Countryside: the perfect show for 2025

A celebration of Piper's love of landscape set in three acres of beautiful gardens at Netherwood Manor in rural Herefordshire, WR15 8RT.

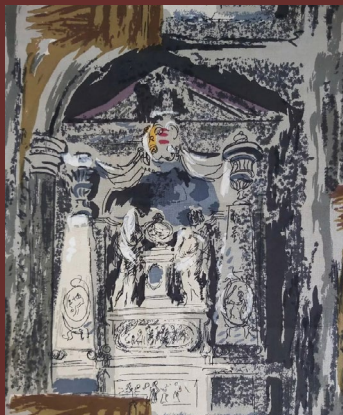
The exhibition will include over 50 original prints, fabrics and paintings and will offer a special display of textiles, ceramics and art inspired by the county.

This free exhibition will be displayed in a medieval timbered barn and the extensive gardens will be open for the first time under the National Gardens Scheme, the Estate also offers accommodation and an innovative 'farm-to-fork' restaurant.

The exhibition will be open from 10.00 am - 4.00 pm from 31st May – 8th June and from 19th – 22nd June, the gardens will be open each weekend at the same times.

John Piper in the Countryside

At Netherwood Manor in rural Herefordshire | WR15 8RT



31st May – 8th June & 19th – 22nd June
10.00 am - 4.00 pm

For more information, please contact:
richard@fiftiesart.com or 07714 106386

www.fiftiesart.com

www.netherwoodestate.co.uk



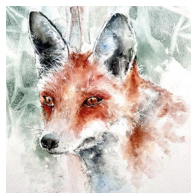


A Summer of creativity awaits at Chapel Cottage Studio!

Whether you are an experienced artist or just starting out we have a choice of exciting workshops with expert tutors that are sure to inspire. Here is a selection of what we have coming up in May and June:



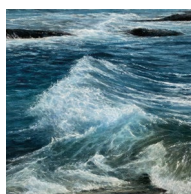
Friday 2nd May
Ladybird in mixed media
with Alison Board
1.30 - 4.30pm - £40 pp



Saturday 3rd May
Rowan Fox in mixed media
with Alison Board
10am - 4pm - £75 pp



Saturday 17th May
Creative Freedom
with Miriam Vincent
10am - 4pm - £92 pp



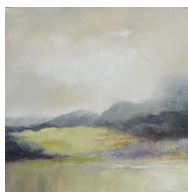
Friday 6th June
Dramatic Seascapes in soft pastels with Gareth Jones
10am - 4pm - £80 pp



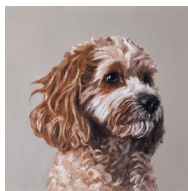
Friday 13th June
Bluebells in oils or acrylics
with DJ Johnson
1.30 – 4.30pm - £45 pp



Saturday 14th June
Woodland Light in oils or acrylics with DJ Johnson
10am - 4pm - £75pp



Saturday 21st June
Semi-abstract landscapes in acrylics with Feona Ness
10am – 4pm - £65 pp



Sat 28th– Sun 29th June
Pet Portraits in oils with Amanda Turner
10am – 4pm each day
- £160 pp

Our workshops offer a wonderful opportunity to learn new skills, create something beautiful, connect with others and be inspired by the world of art. We offer a friendly, informal setting where you can be sure of a warm welcome.

Book your class at:
chapelcottagestudio.co.uk
or feel free to get in touch for more
information:
info@chapelcottagestudio.co.uk

Chapel Cottage Art Studio

Annual Open Weekend:

Sat 24th – Sun 25th May – 10am – 4pm – FREE ENTRY



We will be holding our annual Open Weekend and Exhibition here at CCS on the 24th and 25th of May as part of the wonderful Crickhowell Open Studio's event. Come along and say hello, have a look at some of the beautiful Art on display and find out more about what we do here at CCS. The exhibition will include work by our resident artist Jantien Powell, as well as several of our talented students. There will be home made cakes, tea and coffee on offer and there is plenty of outdoor space for well behaved pets and children to play!

Chapel Cottage Studio | Llanddewi Rhydderch | Abergavenny | NP7 9TT
01873 840282 / 07935 934898

chapelcottagestudio.co.uk



Claire Lovell, Spring Blooms

exhibition of selected work is launched during the weekend of 24 – 26 May, it is an annual highlight attracting exceptional entries.

A programme of demonstration and events are to be found in the free printed guides which are widely available in shops, galleries, libraries and tourist information centres across the area or from the Crickhowell Resource & Information Centre, CRiC, Beaufort Street, Crickhowell, NP8 1BN
T: 01873 813667 www.orielcric.wales
Copies can be requested from:
gallery@visitcrickhowell.wales

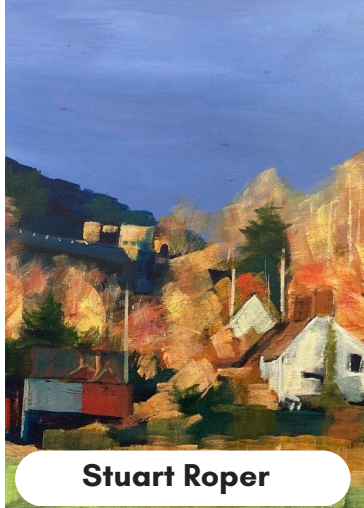
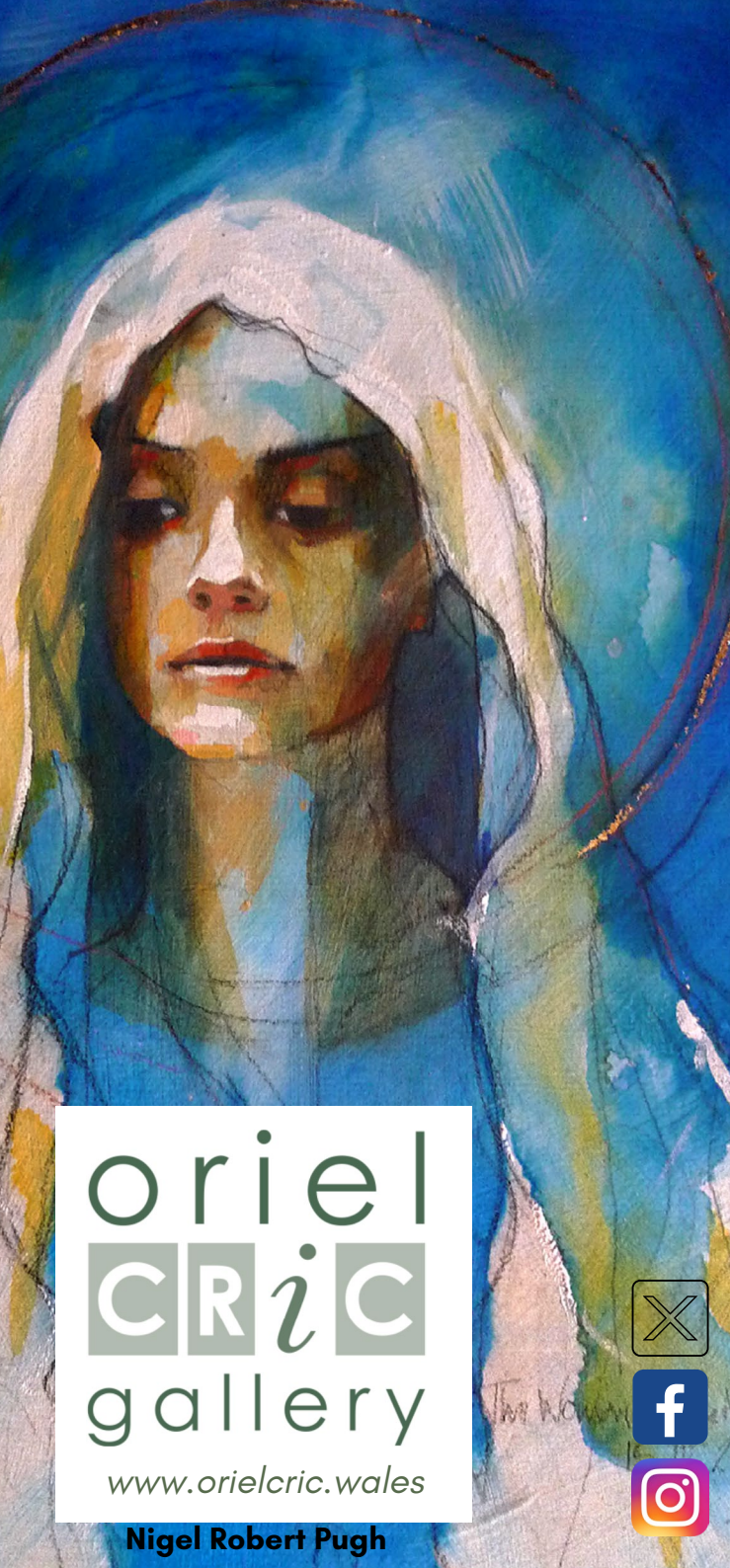
Celebrating 15 years since the first Open Studios weekend took place in Crickhowell, the Spring Bank Holiday Weekend will once again see twenty four venues open their doors to show a wonderful variety of art. The popular annual event brings with it a festive atmosphere and gives the perfect excuse to explore Crickhowell and the surrounding area.

Visitors can explore and discover the joy of collecting affordable art created by artists in Studios, galleries and pop-up artist collectives in unusual spaces across the area. You're sure to have a warm welcome and to come away feeling inspired, taking home a token of your visit or having signed up to a workshop or class.

The event is organised by the Oriel CRiC Gallery and the gallery's Open Art



Johanne Anders, Fashionista | Lee Wright, Echinacea | Helen Arthur, Tree Songs Shelter



Stuart Roper



Cerys Knighton



Patrick Berry

oriel
CRIC
gallery

www.orielcric.wales

Nigel Robert Pugh



NORTH PEMBROKESHIRE OPEN STUDIOS 2025

**Saturday 23rd August – Saturday
6th September 2025.**

Make a date to visit the studios of over 40 contemporary artists in the beautiful, rugged and ancient North Pembrokeshire landscape this year. Talk to painters, printmakers, potters, textile artists, jewellery makers and sculptors about their work, their process and their inspiration. Discuss your own work with an expert and get advice.

Buy original work direct from the artist, commission a special piece or watch a demonstration. Or simply enjoy an expedition to see the huge variety of extraordinary artworks produced in this stunning part of Wales.

Look out for the North Pembrokeshire Open Studios (NPOS) logo outside studios, on directional signs, banners, posters and flags. Visit our live website www.npopenstudios.co.uk to find out more about the artists taking part, and their studio opening times and locations.

The NPOS brochures will be available from early July and will have colour

coded maps to help you plan your route as well as lists of artists organised by area. Find the brochures in venues around North Pembrokeshire including Newport Visitor Information Centre.

If you are unable to make the Open Studios dates, most artists welcome visitors all year round by appointment.

In addition, two exhibitions of work by participating artists will be held at Pepper's Gallery in Fishguard from May 17th – June 1st and from August 16th – September 6th.

While you're here, take time to walk on our beautiful beaches, the coastal path or visit prehistoric sites and the Preseli Mountains. North Pembrokeshire has welcoming cafes, restaurants, microbreweries, shops and a variety of accommodation to make your stay even more memorable.

www.visitpembrokeshire.com

NPOS artists look forward to meeting you!



NORTH PEMBROKESHIRE OPEN STUDIOS 2025

OVER 40 QUALITY ARTISTS AND MAKERS
INVITE YOU TO VISIT THEIR STUDIOS

23rd AUGUST - 6th SEPTEMBER



info@npopenstudios.co.uk

www.npopenstudios.co.uk

Cover photograph:

Smoky Pearl handbuilt bowl - Linda Unsworth

Natural History Watercolour Artist
Tracey-Anne Sitch



You can see my work at:

The Frogmore Street Gallery, Abergavenny

www.frogmorestreetgallery.co.uk

Oriel Cric

www.visitcrickhowell.wales

The Royal Watercolour Society of Wales

www.royalwatercolourssocietywales.com

In the TWASI 2025 exhibition

www.twasi.com

Email: traceyannesitch@sky.com

The Wildlife Art Society International

ANNUAL EXHIBITION

at Nature In Art

2 miles north of Gloucester
on the A38. GL2 9PG
www.natureinart.org.uk

Artwork: Geoff Jennings

Preview evening:

Friday 23rd May, 6.00pm-8.30pm

Open daily:

10.00am-5.00pm, Sat 24th May-Sun 1st June
(closes 2.30pm Sun 1st)

FREE ENTRY



The Wildlife Art Society International

www.twasi.com

Val Williams Exhibition

3rd - 24th May



I was born in West Glamorgan in the early fifties and moved to Pontypridd in 1974 to start my teaching career.

My work is almost always informed by the landscapes, both urban and rural, to be found in south and west Wales.

Although I've experimented with inks, pastels and collage, at present my preferred medium is acrylic. This speaks to my personality - as painter friends have often observed, I like to paint at pace!



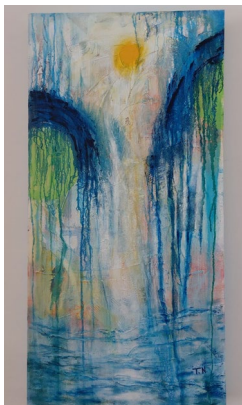
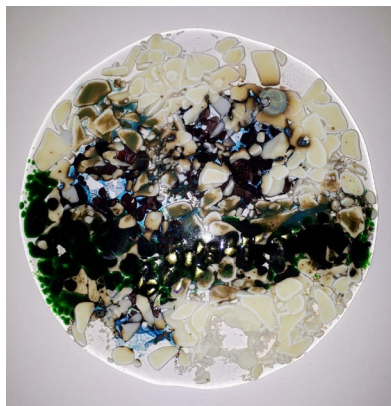
Tues - Friday 10 - 5pm | Saturday 10 - 4pm

Giles Gallery, Old Methodist Chapel, Cowbridge Rd, Pontyclun, CF72 9EG



Tanya Nowak Exhibition

31 May to 2 June



I regard my artwork as a journey through my life. There is nothing better than losing oneself in the creative process and wondering where it is taking me. I like to explore working with a number of mediums; pastels, acrylics, watercolour, charcoal and inks.

On retirement I became interested in working through the medium of glass. The reactions of different coloured glasses when they are fused together, the effects of copper oxide powder on glass - there is so much to learn.

Tel: 07879035921 Email: beth@gilesgallery.com

www.gilesgallery.com

Jill Jones Fine Art

www.jilljones.co.uk

solo exhibition

New Landscapes



'Calmer Waters'
(47 x 47cm approx framed)
Original £695

New Seascapes



'Coastal Splash'
(64 x 80cm framed, in white
double wooden frame)
Original £895

May 3rd to June 21st 2025

ArtLife:FullColour

New Abstracts



*'May Angel Wings Surround you
with Love'*

(80 x 1.1m approx framed)
Original £1500

New Coastal pieces



'Cartref' (Home)
(90 x 90cm approx framed)
Original £1500



[www.linkedin.com/in/
jilljonesfineart](https://www.linkedin.com/in/jilljonesfineart)



[facebook.com/
jilljonesart](https://facebook.com/jilljonesart)



[instagram.com/
jilljones_art](https://instagram.com/jilljones_art)



[Jill Jones Fine Art
at Havens Art School](https://www.youtube.com/channel/UCatHavensArtSchool)



[pinterest.co.uk/
JillJonesFineArt](https://pinterest.co.uk/JillJonesFineArt)



[tiktok.com/
@jilljonesfineart](https://tiktok.com/@jilljonesfineart)



Royal Watercolour Society of Wales Cymdeithas Frenhinol Dyfrlliw Cymru

Established 1959

Patron HM King Charles III

The Royal Watercolour of Wales aims to exhibit, encourage and promote the craft of watercolour in its many different guises.

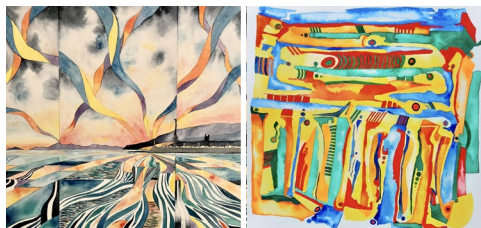
The Royal Watercolour Society of Wales was formed by six like-minded artists, living in and around Cardiff, to exhibit and promote this medium by holding regular exhibitions of their work throughout Wales. The first exhibition was held in 1959 at the National Museum of Wales in Cardiff. Today the society has around 40 members - all professional artists, living and working in Wales. Entry to the society is by election: in this way the RWSW maintains high standards of work as well as attracting new talent to its ranks.

Showcasing the art of watercolour, through the paintings of its members, RWSW aims to provide a forum for the continuing appreciation and development of the medium.



In 2007 The Royal Watercolour Society of Wales was honoured when the Prince of Wales agreed to become its patron having exhibited with us for some years. A further

honour followed in 2013 when Her Majesty the Queen agreed that the name of the Watercolour Society of Wales be changed to the Royal Watercolour Society. We are most gratified that his majesty had continued his patronage of the society after assuming his position as sovereign.



Royal Watercolour Society of Wales exhibitions in 2025

Chester

24th of May to the 19th of October
Grosvenor Museum,
27 Grosvenor Street
Chester, CH1 2DD

Aberglasney

May of 30th to the 12th June
Aberglasney House & Gardens
Llangathen, Carmarthen SA32 8QH

Mid Wales

Sunday 20th of July to the 19th of
October

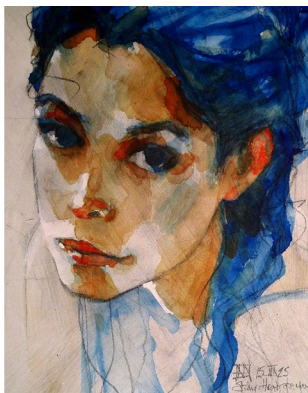
Mid Wales Arts Centre,
Maesmawr,
Caesws, Newtown SY17 5SB



Royal Watercolour Society of Wales Cymdeithas Frenhinol Dyfrlliw Cymru

Established 1959

Patron HM King Charles III



Over 40 professional members throughout Wales.

To apply to become a member or to become a friend of the society
visit our new website:

www.royalwatercoloursociety.wales



ALEX BROWN AND WABI-SABI

Although his laurels are impressive, Alex Brown does not rest on them. That is to say he is a restlessly creative artist, who is never satisfied with what he has achieved, and always looks to move on, improve, try something new and different. He is known for his bravura use of a palette knife, his mark-making and his brilliant colour sense. Now, through a fascination with Japanese art he has focused on Wabi-sabi, a particular and significant feature of Japanese notions of beauty.

There are many definitions and aspects to Wabi Sabi. Richard Powell writes “Wabi-Sabi nurtures all that is authentic by acknowledging three simple realities: nothing lasts, nothing is finished, and nothing is perfect”. The Stanford Encyclopaedia of Philosophy states that wabi can be said to be “subdued austere beauty”, and sabi means “rustic patina”. Wabi-sabi has slowly evolved over hundreds of years and in modern Japan it is now often thought of as “wisdom in natural simplicity”, while in art it is focused on “imperfect beauty”.

In Japan Wabi-sabi can be found in garden design, in poetry, flower arrangement and often in wood fired ash glazed ceramics.



Alex has channelled it into this new series of paintings, in which his use of a palette knife, and even a paint brush, have been discarded. Instead he prepares the canvas in various ways. For instance he sometimes scatters crumbled charcoal over the canvas for texture, then applies resin over it, and waits for it to dry before applying paint. Paint is poured and dripped section by section, with sometimes the canvas being angled to make it move. Everything is done in stages, with long waits for paint to dry and the composition to develop. We are delighted to exhibit these new pieces by Alex, art which rewards close observation and thoughtful contemplation.

Bluestone Gallery

Contemporary art and craft from across the British Isles



5 Castle Street, Hay on Wye, HR3 5DF
01497 820916

www.bluestonegallery.com

A Shared Pulse – Art & Music

There is something unmistakably alive in both original art and live music — a pulse, a presence, a moment captured in time that resists replication.



Y Segontium
atelier a bar

That's what we aim to bring to you
at our atelier and bar
Y Segontium this season.

Join us from 7pm every Friday
and Saturday, you'll enjoy the craic!

Y Segontium, 9 Segontium Terrace,
Caernarfon (Just off the square).

In live music, a slight hesitation or an improvised note becomes part of the story. In original art, a visible correction, a layered canvas, reveals process over perfection. These imperfections are invitations — to connect, to witness, to feel.

In a world of endless reproduction, both original art and live music offer something unrepeatable. They remind us what it means to be present, to be human, to be moved.

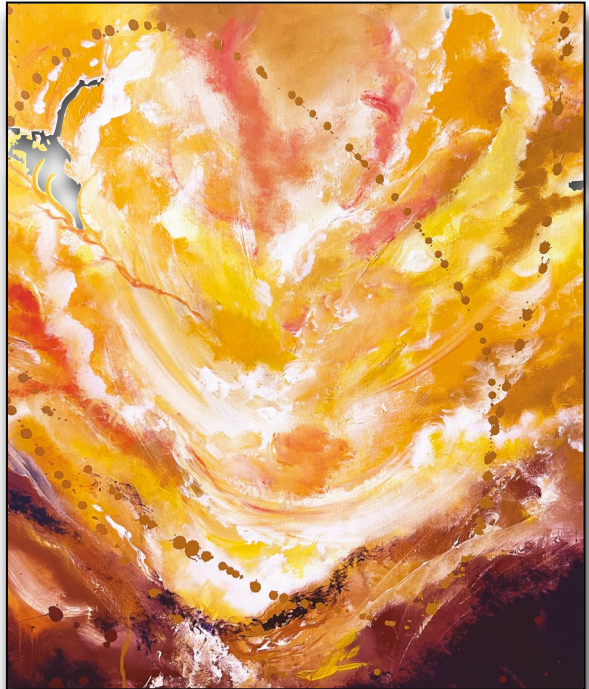
LIVE music
every
Friday night
and original
paintings to buy
off the wall.

**Sat 3rd May to
21st June
2025**

Joy Unlimited

New Works by Jill Jones FRSA

'Joy Unlimited' is a radiant new collection of paintings by professional fine artist Jill Jones. Known for her evocative depictions of land and sea, Jones brings together a series of landscapes, seascapes, coastal scenes, and bold abstracts that celebrate colour, light and movement. Working in both acrylic and oil, her expressive brushwork and rich textures capture the elemental energy of the natural world. From the shifting skies over dramatic Welsh headlands to the rhythmic pulse of waves crashing onto rugged shores.



'May Angel Wings surround you with Love'
by Jill Jones FRSA. £1500

**Opens Saturday
3rd May at
Life: Full Colour
gallery in
Caernarfon**

e: hello@lifefullcolour.com
w: lifefullcolour.co.uk
t: 01286 400155



Dawn Harries Art

Exhibiting at Victoria Fearn Gallery
23rd May - 5th July 2025



New Landscape paintings available at Victoria Fearn Gallery in a joint show.

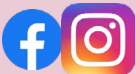
Come along to the preview evening and meet the artists.

Preview Evening Friday 23rd May 5-8pm



6b Heol y Deri, Rhiwbina, Cardiff, CF14 6HF
Open Monday - Saturday 9.30am - 5.30pm

VICTORIA FEARN GALLERY



@dawnharriesart www.dawnharriesart.co.uk info@dawnharries.com

The Makers at Craft Renaissance:

A gallery with a difference.

A warm welcome always awaits you at our arts & crafts gallery, a bright and beautiful space at Craft Renaissance, halfway between Abergavenny and Usk - a relaxing, inspiring environment. Regular opening times are Wednesday - Saturday, 10:30am - 4:00pm, Sunday 11am - 4:00pm.

The Gallery is proud to host both established and emerging creatives, with a diverse range of works. From oil paintings to willow weaving, ceramics to blacksmithing, textiles to photography. Our makers volunteer as stewards, giving visitors the opportunity to chat directly with the artists. In addition to the Gallery is The Makers Studio, where two of our members, Textile/Clay artist Emma Bevan and painter Janet Chaplin, have their studios; both run workshops here.

Please join us for the Oriel CRIC Open Studios and art trail during the May Bank Holiday, Saturday 24th May - Monday 26th May (Gallery & Studio), 10am - 5pm. Cafe open 9am - 4pm.

Instagram: @themakers_craftrenaissance | Facebook: The Makers at Craft Renaissance | Email: themakerscraftrenaissance@gmail.com
Address: Kemeys Commander, NP15 1JU
what3words: galaxies.campfires.movies



www.themakerscraftsgallery.co.uk

**FOUND
GALLERY**

Maggy Roberts

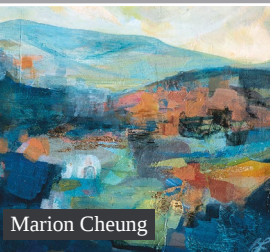


Corisande Albert

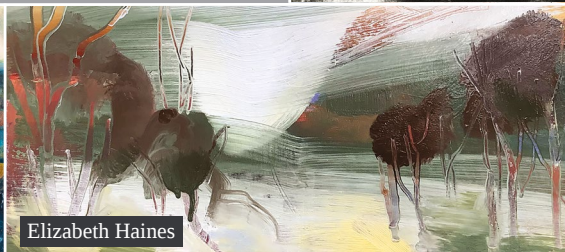
CONVERSATIONS IN PORCELAIN & PAINT + PORTRAITS OF TREES

30th April – 29th June 2025

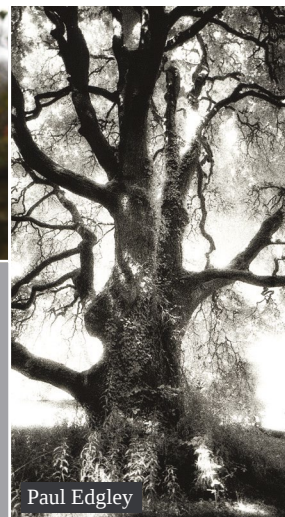
Tuesday to Saturday 10am-4.30pm



Marion Cheung



Elizabeth Haines

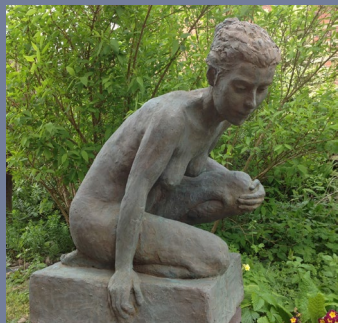


Paul Edgley

Old Chapel Gallery | East Street | Pembridge | Herefordshire | HR6 9HB

Old Chapel Gallery

Contemporary Fine Art and Crafts in Herefordshire



Old Chapel
Gallery
PEMBRIDGE



Hay Festival Exhibition on now - 30th June

Garden Sculpture Exhibition 2025

'Shadows on the Grass' - ongoing throughout the year

View in the gallery & online

Tel: 01544 388842



www.oldchapelgallery.co.uk

OWN
ART

Chalk Wovens



☎ 01273 389545
✉ info@chalkwovens.com
f @Chalkwovens
i @Chalkwovens
www.chalkwovens.com



Elaine Jones Art



Elaine works in her old railway carriage studio at her home in the hills between Cynghordy and Llandovery, taking much inspiration from her surroundings in the stunning Carmarthenshire countryside. Her work includes atmospheric landscapes & seascapes, florals, wildlife, and intuitive abstract paintings in a variety of art mediums. Original artworks, fine art prints, along with an array of Elaine's handmade crafts can be purchased straight from her studio, website, social media, some local shops and cafes, and various craft fairs and exhibitions throughout the year. Follow her on social media to see new artworks, markets, and exhibitions.

Elaine is looking forward to greeting visitors to her studio during the **Tywi Valley Open Studios Arts Trail 2025 (26/7 - 3/8)** For more information, go to <https://tywivalleyopenstudios.wales> Commissions welcomed and creative well-being workshops offered. Elaine is passionate about inspiring others to use creativity for health and well-being, exploring the joy of the process by adopting an intuitive, freeing and fun approach.

Website and other useful links are via: www.elainejonesart.bigcartel.com
Email: elainejonesart@gmail.com



Craft*folk 2025 dates for your diary

Cardiff Bay Events

All located on the upper level of Roald Dahl Plass

May Day in Cardiff Bay

Saturday 3 to Bank Holiday Monday 5 May

Spring Bank Holiday in Cardiff Bay

Saturday 24 to Bank Holiday Monday 26 May

Cardiff Food and Drink Festival

Friday 27 to Sunday 29 June

August Bank Holiday in Cardiff Bay

Friday 22 to Bank Holiday Monday 25 August

Cardiff Events

Located in Working Street, Cardiff City Centre

Cardiff Spring Festival

Thursday 8 to Saturday 17 May

Cardiff Summer Festival

Saturday 2 to Saturday 16 August

Cardiff Christmas Market 2025

Located in St John Street Working Street, Trinity Street and Hills Street

Thursday 13 November to Tuesday 23 December

For further details on these events, please go to:

www.craftfolk.com www.cardiffchristmasmarket.com



Ewemoo

Foot stools

www.ewemoo.co.uk



Follow us on socials

Gifts for Every
Occasion



ewemoo

www.ewemoo.co.uk

Tel: 07778102238

Unit 2 Ystradgynlais workshops SA9 1BS



The interior design 'must-have' for 2025, ewe'll be spoilt for choice with a Ewemoo!

Everyone's got their own go-to colour and there's a Ewemoo footstool to suit any taste and colour palette choice.

Proudly made in Wales, a Ewemoo footstool is crafted using only the finest materials and adds an elegant, quirky and character filled finish to any space.

See Ewemoo at the following events:

**Spring Festival Builth Wells
May 17th & 18th**

**Hay Festival
22nd May - 1st June**

**Cardiff Food festival
27th June - 29th June**

**Royal Welsh Showground
July 21st - July 24th**

**Winter fair Builth Wells
25th & 26th November**

Visit their website to view their entire collection:

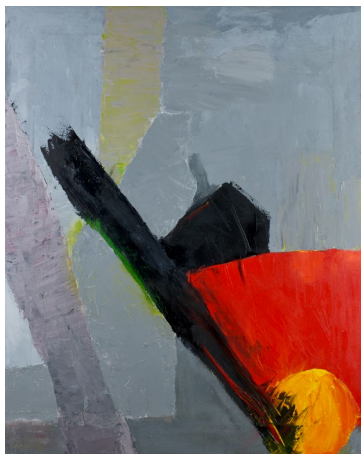
www.ewemoo.co.uk





Apple Store Gallery

ASG at 20
Celebrating Twenty Years of
Local Art & Artists
7th to 31st May



Wednesday to Friday 10am to 3pm
Saturday 10am to 1pm

Unit 1, Rockfield Road, Hereford, HR1 2UA
telephone · 01432 263 937
email · applestoregallery@btinternet.com
web · <https://www.applestoregallery.com>